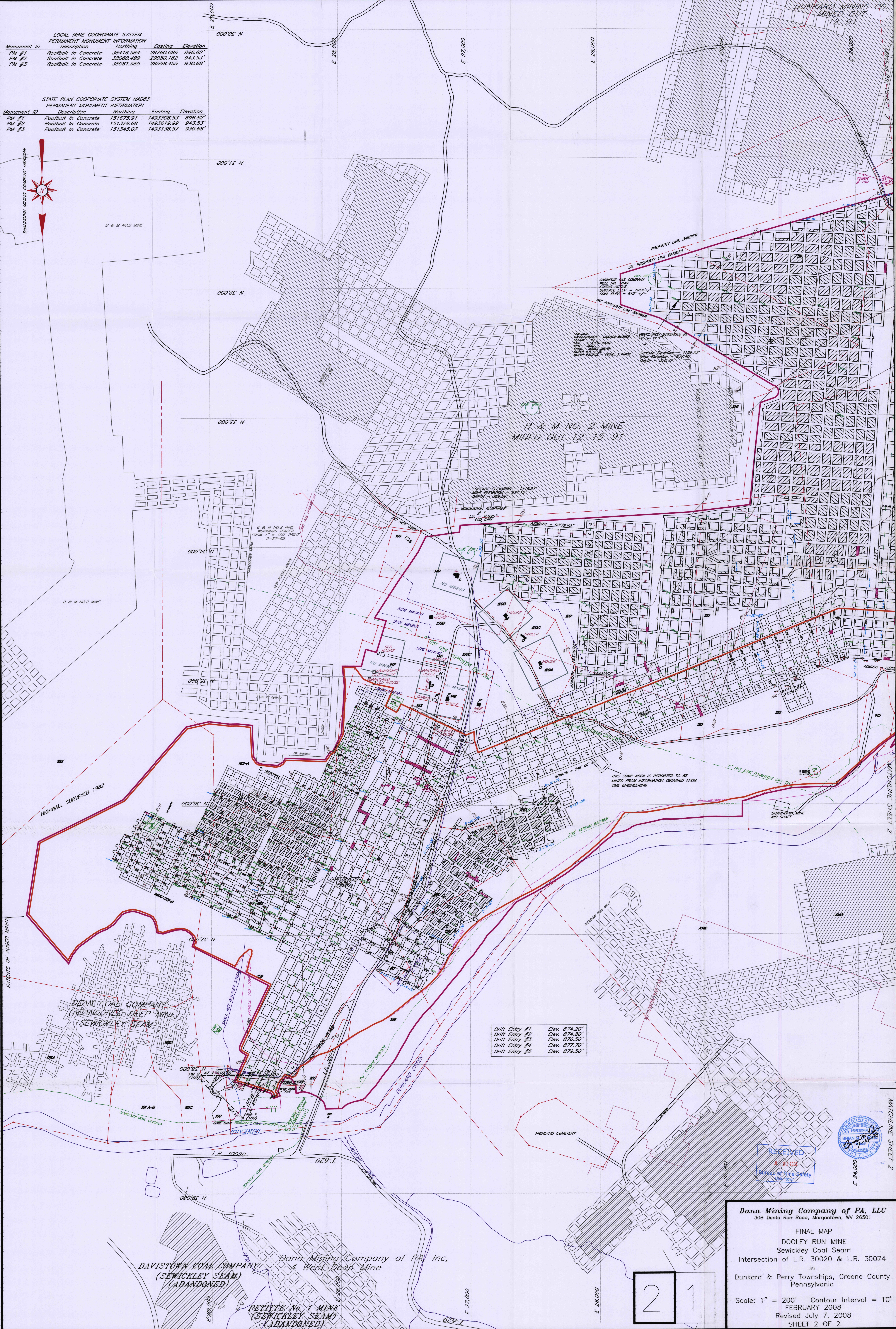


**LOCAL MINE COORDINATE SYSTEM
PERMANENT MONUMENT INFORMATION**

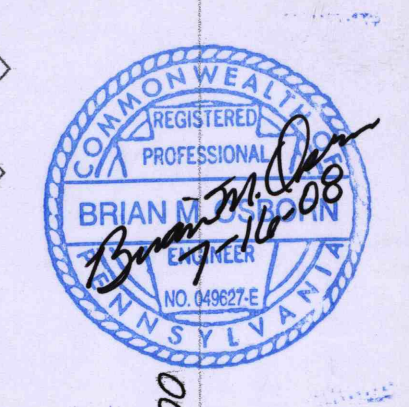
Monument ID	Description	Northing	Easting	Elevation
PM #1	Roofbolt in Concrete	39416.504	29760.096	896.82'
PM #2	Roofbolt in Concrete	39080.459	29080.182	943.53'
PM #3	Roofbolt in Concrete	39081.585	28598.455	930.68'

**STATE PLAN COORDINATE SYSTEM NAD83
PERMANENT MONUMENT INFORMATION**

Monument ID	Description	Northing	Easting	Elevation
PM #1	Roofbolt in Concrete	151675.91	1493308.53	896.82'
PM #2	Roofbolt in Concrete	151329.68	1493619.99	943.53'
PM #3	Roofbolt in Concrete	151345.07	1493138.57	930.68'



Drift Entry #1	Elev. 874.20'
Drift Entry #2	Elev. 874.80'
Drift Entry #3	Elev. 876.50'
Drift Entry #4	Elev. 877.70'
Drift Entry #5	Elev. 878.50'



Dana Mining Company of PA, LLC
308 Dents Run Road, Morgantown, WV 26501

FINAL MAP
DOOLEY RUN MINE
Sewickley Coal Seam
Intersection of L.R. 30020 & L.R. 30074
In
Dunkard & Perry Townships, Greene County
Pennsylvania

Scale: 1" = 200' Contour Interval = 10'
FEBRUARY 2008
Revised July 7, 2008
SHEET 2 OF 2

21

Dana Mining Company of PA, Inc.
4 West Deep Mine

DAVISTOWN COAL COMPANY
(SEWICKLEY SEAM)
(ABANDONED)

PETITTE No. 1 MINE
(SEWICKLEY SEAM)
(ABANDONED)