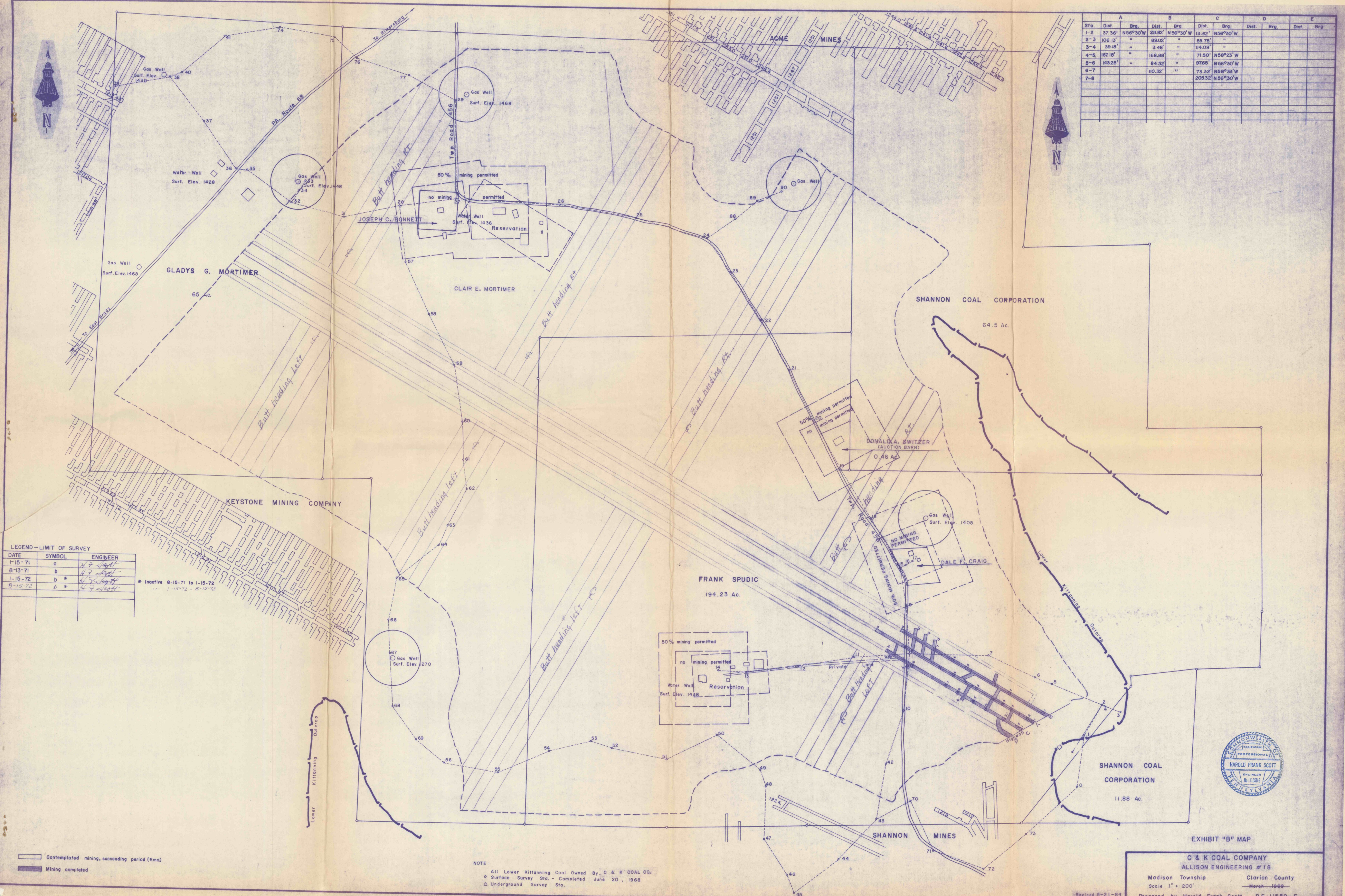


| Sta. | Dist. | Brg. | Dist. | Brg. | Dist. | Brg. | Dist. | Brg. | Dist. | Brg. |
|------|---------|----------|---------|----------|---------|----------|-------|------|-------|------|
| 1-2 | 37.36' | N56°30'W | 211.82' | N56°30'W | 13.62' | N56°30'W | | | | |
| 2-3 | 106.13' | " | 89.02' | " | 85.78' | " | | | | |
| 3-4 | 39.18' | " | 3.46' | " | 114.08' | " | | | | |
| 4-5 | 167.16' | " | 168.86' | " | 71.50' | N56°23'W | | | | |
| 5-6 | 143.28' | " | 84.52' | " | 97.65' | N56°30'W | | | | |
| 6-7 | | | 110.32' | " | 73.32' | N56°33'W | | | | |
| 7-8 | | | | | 205.32' | N56°30'W | | | | |



LEGEND—LIMIT OF SURVEY

| DATE | SYMBOL | ENGINEER |
|---------|--------|-------------|
| 1-15-71 | a | H. F. Scott |
| 8-13-71 | b | H. F. Scott |
| 1-15-72 | b * | H. F. Scott |
| 8-15-72 | b * | H. F. Scott |

* inactive 8-15-71 to 1-15-72
 " 1-15-72 - 8-15-72

Contemplated mining, succeeding period (6mo.)
 Mining completed

NOTE:
 All Lower Kittanning Coal Owned By C & K COAL CO.
 o Surface Survey Sta. - Completed June 20, 1968
 Δ Underground Survey Sta.



EXHIBIT "B" MAP
 C & K COAL COMPANY
 ALLISON ENGINEERING #18
 Madison Township Clarion County
 Scale 1" = 200'
 Merch 1968
 Prepared by Harold Frank Scott, P.E. 11559-E
 Revised 5-21-84