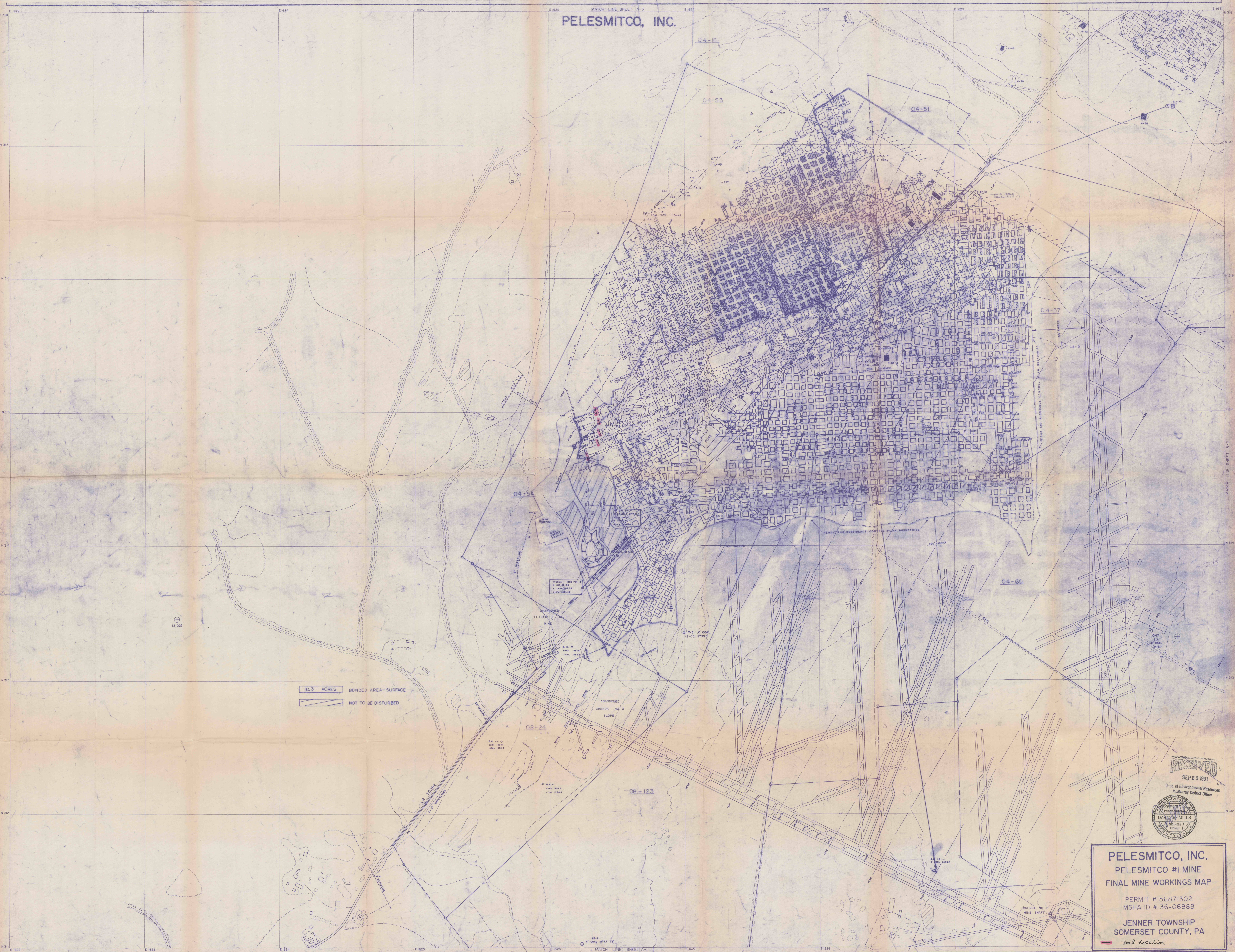


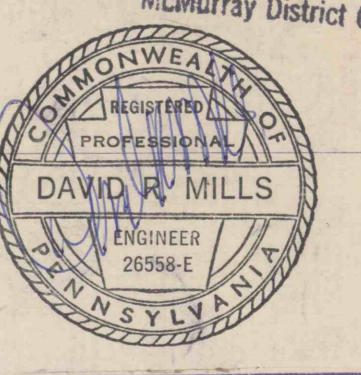
PELESMITCO, INC.

MATCH LINE SHEET A-3



10.3 ACRES BONDED AREA-SURFACE
NOT TO BE DISTURBED

RECEIVED
SEP 23 1991
Dept. of Environmental Resources
McMurry District Office

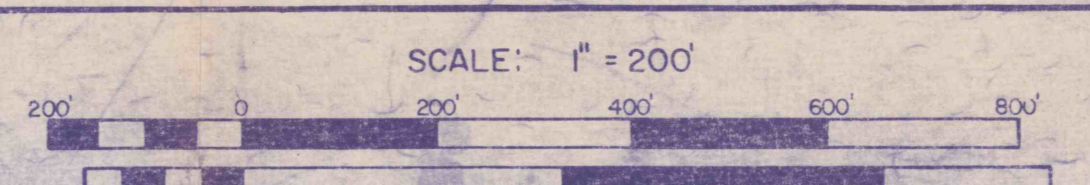


PELESMITCO, INC.
PELESMITCO #1 MINE
FINAL MINE WORKINGS MAP
PERMIT # 56871302
MSHA ID # 36-06888
JENNER TOWNSHIP
SOMERSET COUNTY, PA
Real Location

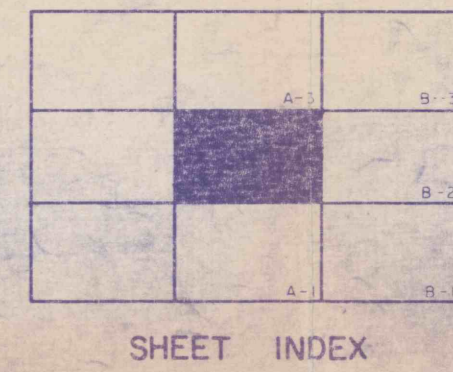
JENNER TOWNSHIP
SOMERSET COUNTY
PENNSYLVANIA

LEGEND

UNPAVED ROAD	RAILROAD	BLANCH MARK
PAVED ROAD	LAKE, POND	TRaverse STATION
U.S. ROUTE	FENCE	PHOTOGRAMMETRIC POINT-ELEVATION
INTERSTATE	SWAMP	CONTOUR
L.N. 1000 LEGISLATIVE ROUTE	WOODS LINE	PHOTO CENTER
T. 000 TOWNSHIP ROUTE		



DATE OF PHOTOGRAPHY: MAY 3, 1975
CONTOUR INTERVAL: 5'



PLANIMETRIC SERIES

SHEET NO. A-2