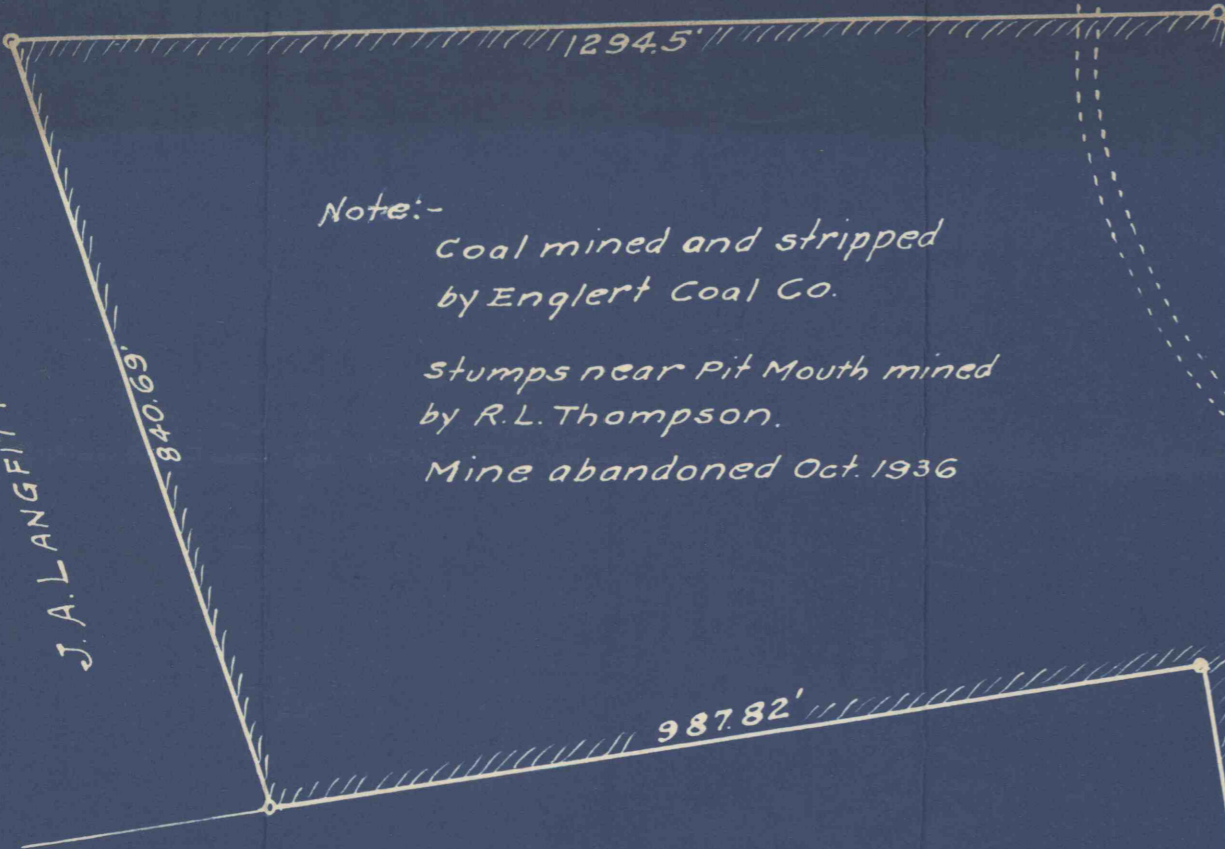


N.E. PARRISH

Note:-
Coal mined and stripped
by Englert Coal Co.
Stumps near Pit Mouth mined
by R.L. Thompson.
Mine abandoned Oct. 1936

J.A. LANGFITT



987.82'

C.B. McNulty
Area 53 Ac.

Inaccessible beyond
this point
Approx 15' crop line
L.P.M. coal stripped

Elev Top Coal 940.86'

W.H. ROBERTS

1338.40'

TWP.
BORO.

ROBINSON
CARNEGIE

WATSON ST.

626.24'

THOMAS ST.

680.52'

BELL AVE. 511.83'



PLAN OF PROPERTY
Leased by
R.L. THOMPSON

Situate in Robinson Twp.

Alleg. Co. Pa. Oct. 23, 1936

Scale 1"=200' Guy A. Reed - #3035

RR