

Keep with # 2150

RoxCoal, Inc.
Miller Mine

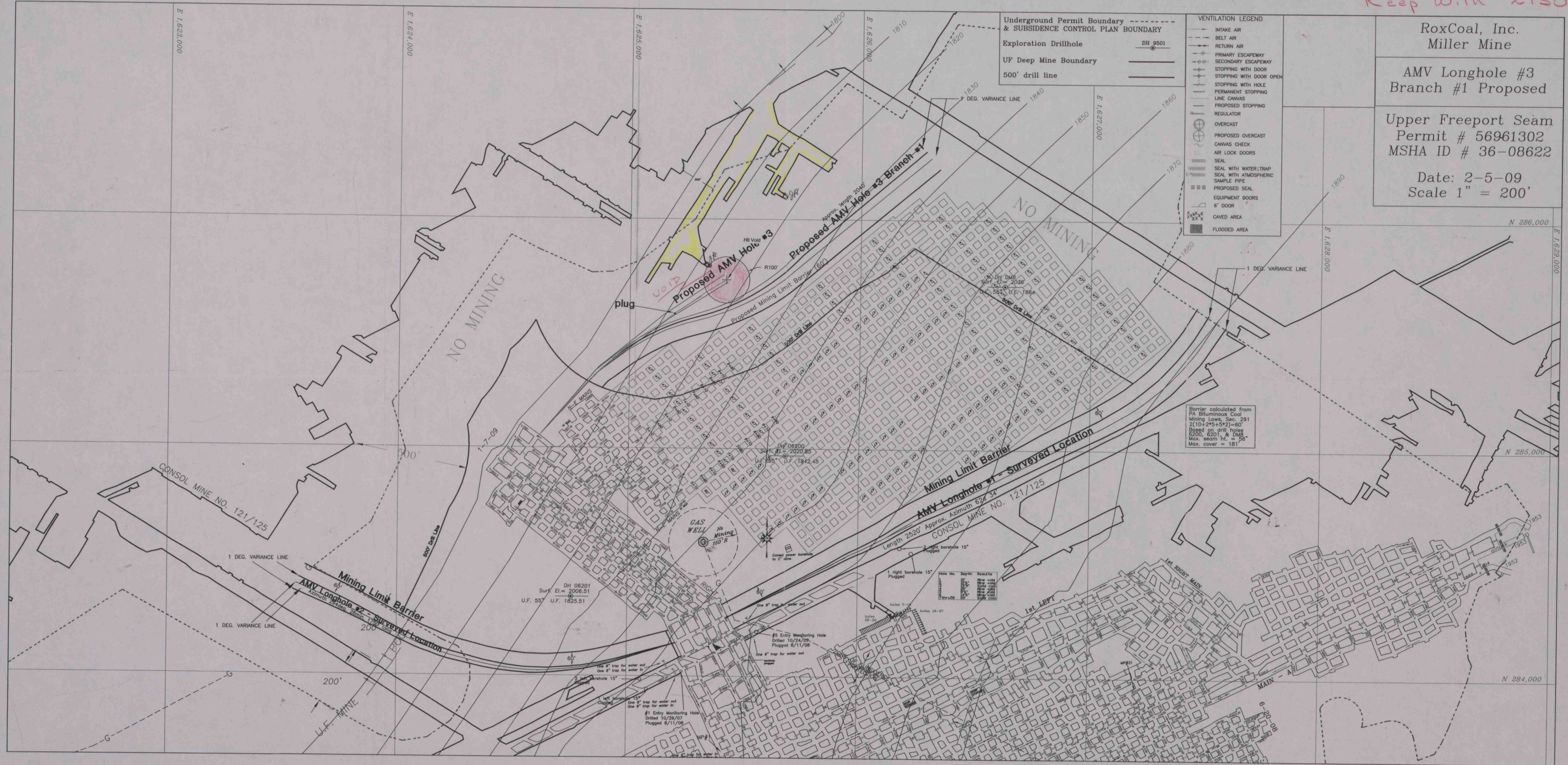
AMV Longhole #3
Branch #1 Proposed

Upper Freeport Seam
Permit # 56961302
MSHA ID # 36-08622

Date: 2-5-09
Scale 1" = 200'

Underground Permit Boundary & SUBSIDENCE CONTROL PLAN BOUNDARY
Exploration Drillhole
UF Deep Mine Boundary
500' drill line

- VENTILATION LEGEND
- INTAKE AIR
 - BELT AIR
 - RETURN AIR
 - PRIMARY ESCAPEWAY
 - SECONDARY ESCAPEWAY
 - STOPPING WITH DOOR
 - STOPPING WITH DOOR OPEN
 - STOPPING WITH HOLE
 - PERMANENT STOPPING
 - LINE CANVAS
 - PROPOSED STOPPING
 - REGULATOR
 - OVERCAST
 - PROPOSED OVERCAST
 - CANVAS CHECK
 - AIR LOCK DOORS
 - SEAL
 - SEAL WITH WATER TRAP
 - SEAL WITH ATMOSPHERIC
 - SAMPLE PIPE
 - PROPOSED SEAL
 - EQUIPMENT DOORS
 - 6" DOOR
 - CAVED AREA
 - FLOODED AREA



Barrier calculated from
PA Bituminous Coal
Mining Laws, Sec. 291
 $2(10+245+5+2)=60'$
Based on drill holes
6200, 6201, & DM8
Max. seam th. = 56"
Max. cover = 181'

Hole No.	Depth	Results
18-27	15'	Plugged
7-14	15'	Plugged
28-30	15'	Plugged
18-27	15'	Plugged