

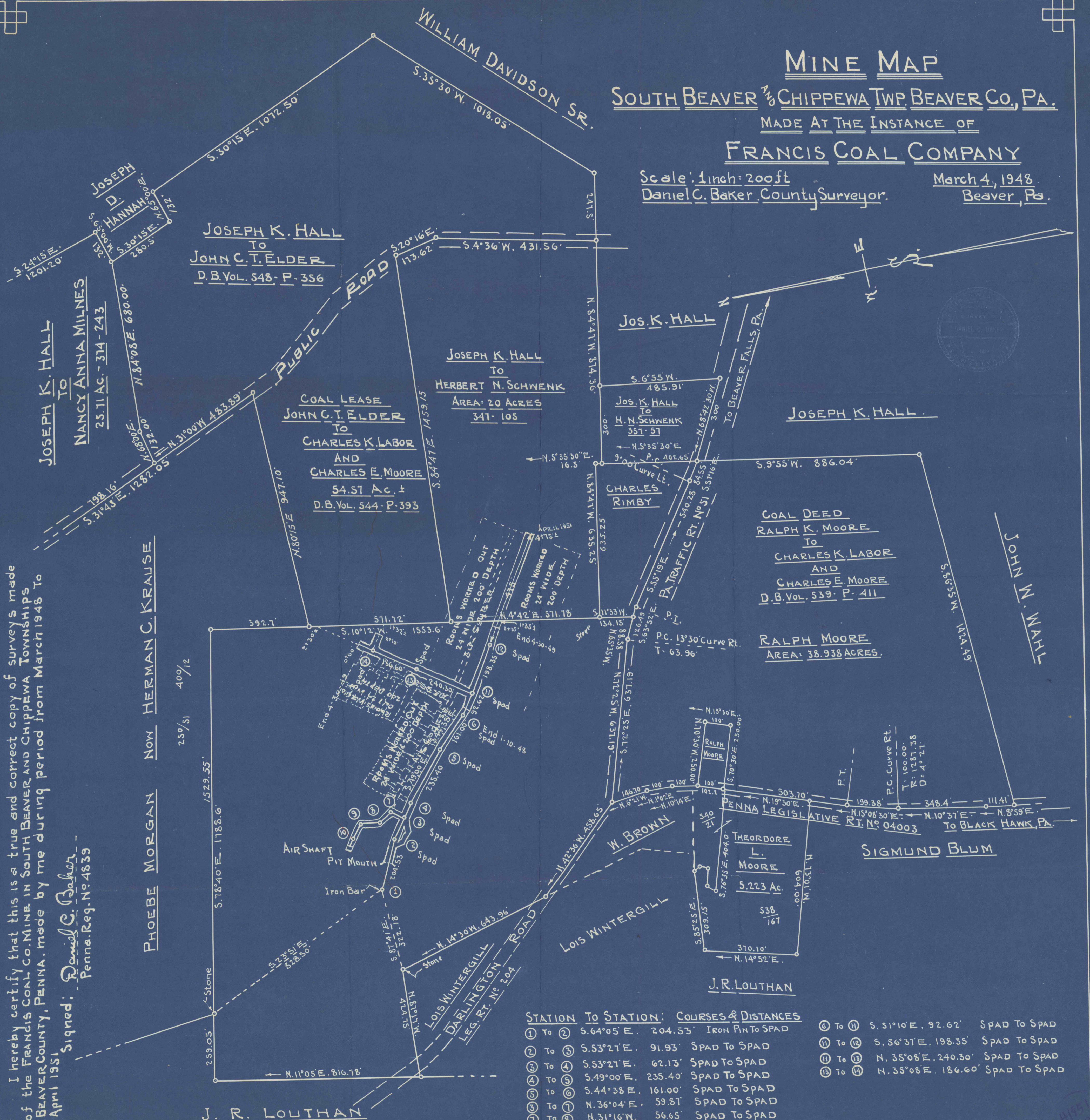
MINE MAP

SOUTH BEAVER AND CHIPPEWA TWP. BEAVER CO., PA.

MADE AT THE INSTANCE OF
FRANCIS COAL COMPANY

Scale: 1 inch = 200 ft
Daniel C. Baker, County Surveyor.

March 4, 1948
Beaver, Pa.



I hereby certify that this is a true and correct copy of surveys made of the FRANCIS COAL CO. MINE IN SOUTH BEAVER AND CHIPPEWA TOWNSHIPS BEAVER COUNTY, PENNA. made by me during period from March 1948 to April 1951

Signed: Daniel C. Baker
Penna. Reg. No. 4839

PHOEBE MORGAN NOW HERMAN C. KRAUSE
 250/51
 400/12

STATION	To STATION:	COURSES & DISTANCES
①	To ②	S. 64°05' E. 204.53' IRON PIN TO SPAD
②	To ③	S. 53°21' E. 91.93' SPAD TO SPAD
③	To ④	S. 53°21' E. 62.13' SPAD TO SPAD
④	To ⑤	S. 49°00' E. 235.40' SPAD TO SPAD
⑤	To ⑥	S. 44°38' E. 161.00' SPAD TO SPAD
⑥	To ⑦	N. 36°04' E. 59.81' SPAD TO SPAD
⑦	To ⑧	N. 31°16' W. 56.65' SPAD TO SPAD
⑧	To ⑨	N. 7°21' E. 76.70' SPAD TO SPAD
⑨	To ⑩	N. 52°01' W. 64.42' + 45' TO SHAFT

⑥	To ⑪	S. 51°10' E. 92.62' SPAD TO SPAD
⑪	To ⑫	S. 56°31' E. 198.35' SPAD TO SPAD
⑫	To ⑬	N. 35°08' E. 240.30' SPAD TO SPAD
⑬	To ⑭	N. 35°08' E. 186.60' SPAD TO SPAD

NOTE: PLAN ASSEMBLED PARTLY FROM SURVEY AND PARTLY FROM PLOTTING DEEDS