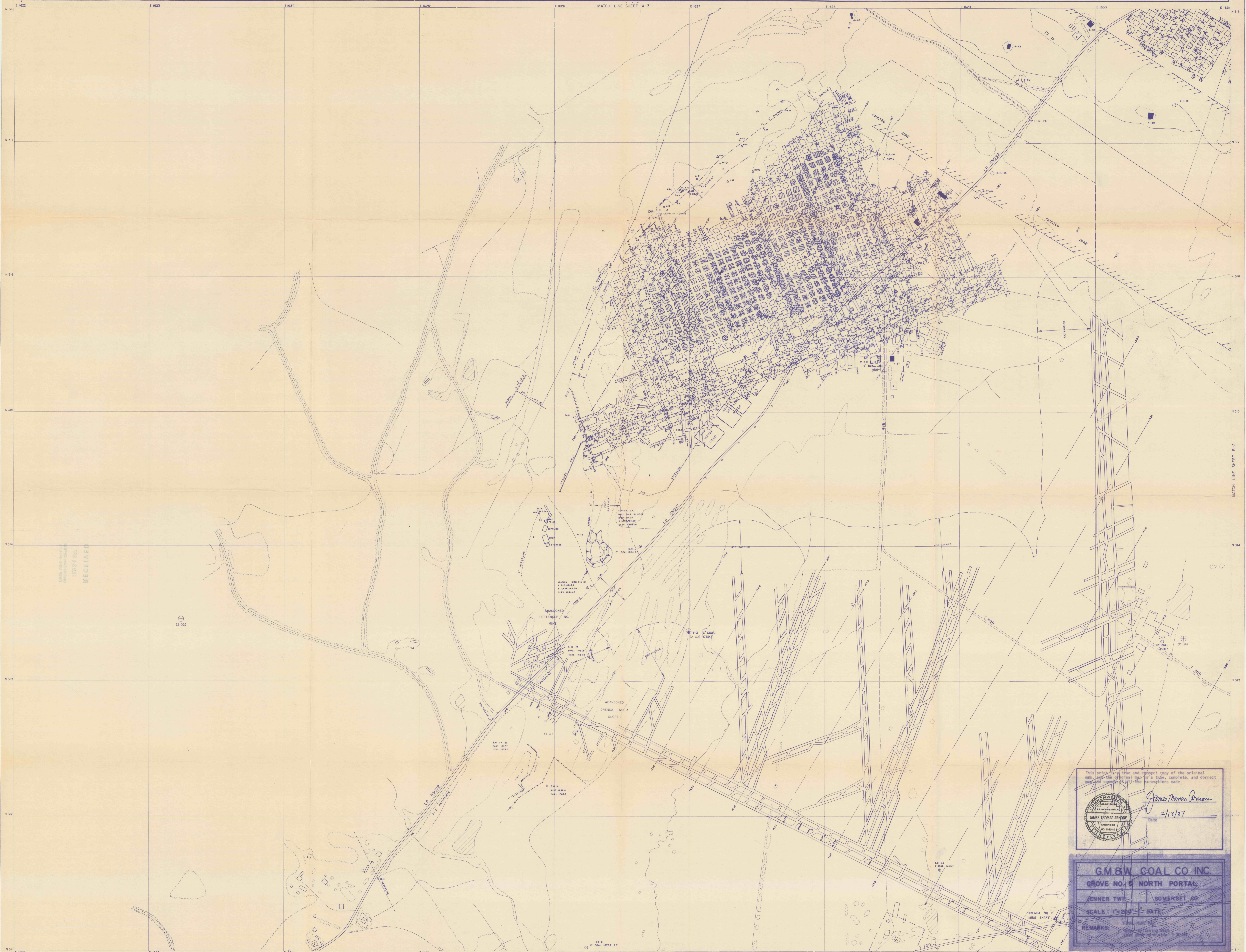


G. M. & W. COAL CO., INC.



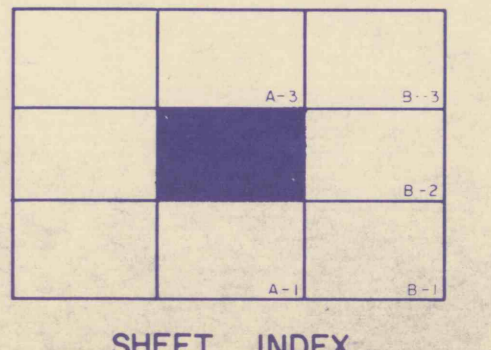
RECEIVED
LIBRARY

12-001

CONEMAUGH & JENNER TOWNSHIPS
SOMERSET COUNTY
PENNSYLVANIA

- | | | | | | |
|-----|-------------------|-----|------------|---|--------------------------------|
| --- | UNPAVED ROAD | —+— | RAILROAD | — | BENCH MARK |
| == | PAVED ROAD | ○ | LAKE, POND | △ | TRAVERSE STATION |
| —+— | U.S. ROUTE | — | FENCE | ○ | PHOTOGRAMMETRIC SPOT ELEVATION |
| —+— | LEGISLATIVE ROUTE | — | SWAMP | — | CONTOURS |
| —+— | TOWNSHIP ROUTE | — | WOODS LINE | ⊕ | PHOTO CENTER |

SCALE: 1" = 200'
DATE OF PHOTOGRAPHY: MAY 3, 1975
CONTOUR INTERVAL: 5'
USED IN ACCORDANCE WITH THE PENNSYLVANIA STATE PLANNING AND ZONING ACT
VERTICAL CONTROL BASED ON 1929 M.S.L. DATUM



SHEET INDEX

This is a true and correct copy of the original map and the original map is a true, complete, and correct copy of the original map. The excavations made.

James Thomas Armura
DATE: 2/19/37

G. M. & W. COAL CO. INC.
GROVE NO. 5 NORTH PORTAL
JENNER TWP. SOMERSET CO.
SCALE: 1" = 200' DATE: 2/19/37
REMARKS:

PLANIMETRIC SERIES
SHEET NO. A-2