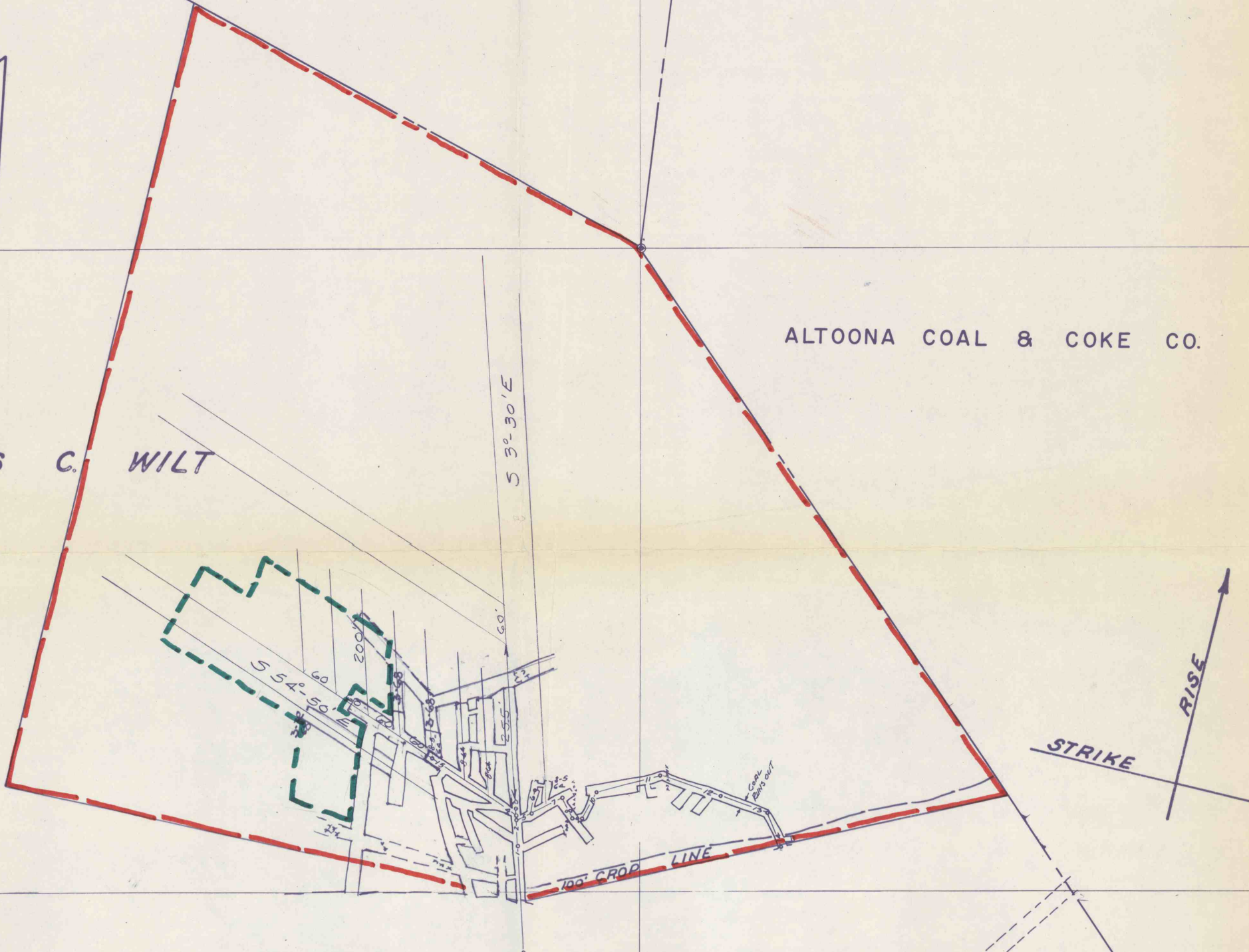


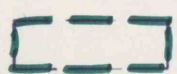
BERNARD MYERS

REVISIONS :	
1	MARCH 15, 1967
2	SEPT. 15, 1967
3	MARCH 20, 1968
4	
5	
6	

ALTOONA COAL & COKE CO.

JAMES C. WILT



 Mining Area
~~Sept. 1967 - Mar. 1968~~
PROJECTED
APRIL 1, 1968 THROUGH SEPTEMBER 30, 1968

PERMIT N° 12-1
 GLENDALE N° 2
 FRANCIS GATES MINE
 GALLITZIN TWP.
 CAMBRIA CO.
 PENNSYLVANIA

ASHVILLE

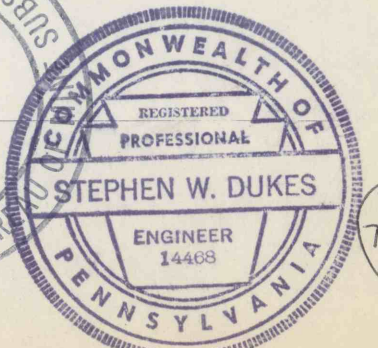
BOROUGH

TO ASHVILLE
1/2 MI.

Plan Prepared by
 GWIN ENGINEERING INC.
 Consulting Engineers
 Altoona, Penna. 16801



SCALE 1" = 200' AUGUST 5 1964
 S.W. DUKES R.P.E. 14468



#1117
 7-23-99
 C.C.