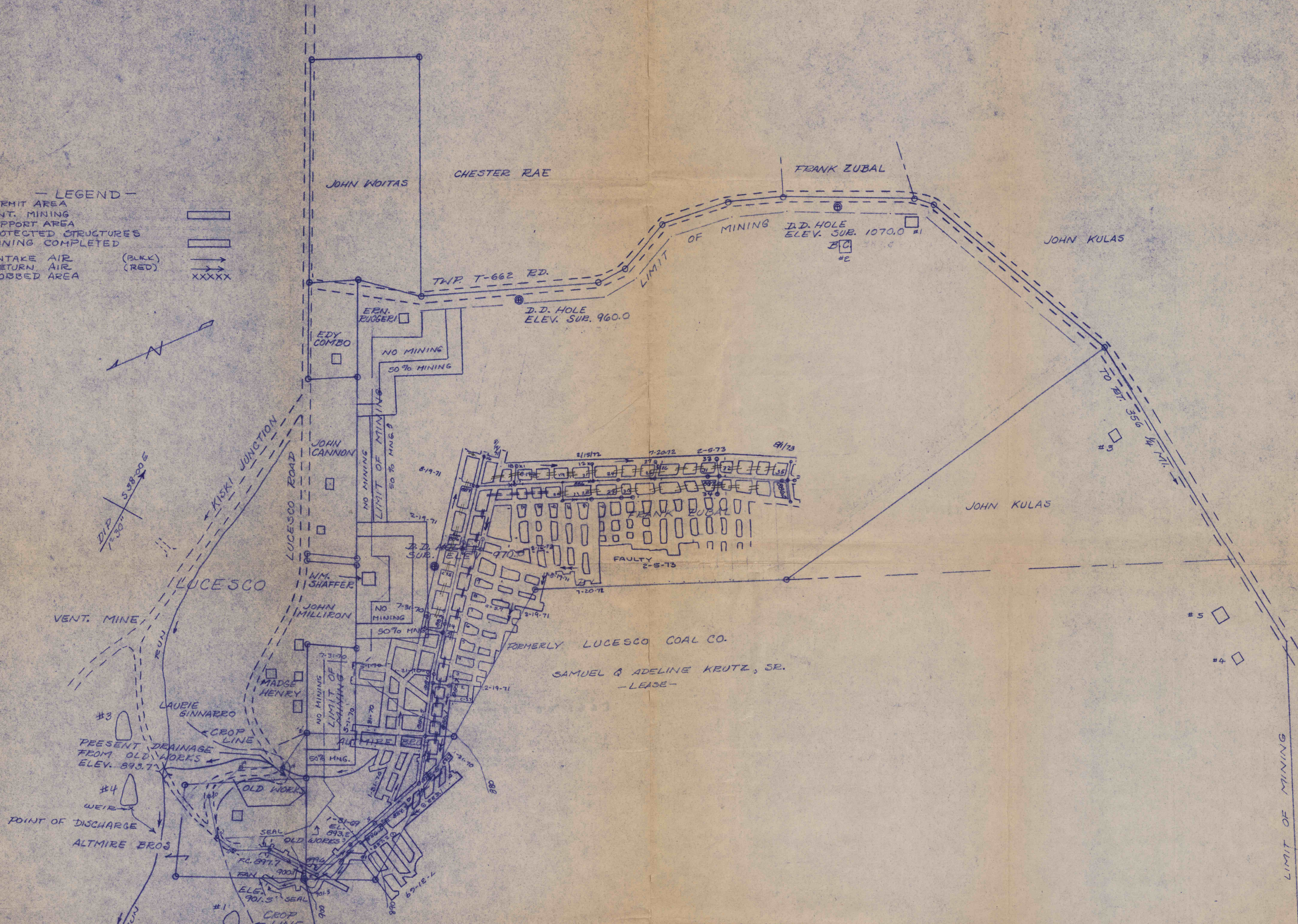
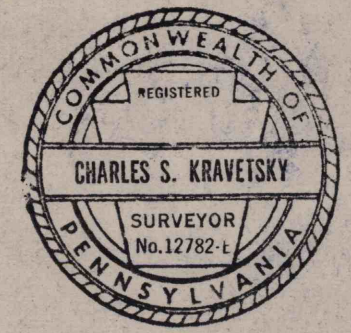


— LEGEND —
 PERMIT AREA
 CONT. MINING
 SUPPORT AREA
 PROTECTED STRUCTURES
 MINING COMPLETED
 INTAKE AIR (BLACK)
 RETURN AIR (RED)
 GOBBED AREA XXXXX



GILMUR NO. 1 MINE, LUCESCO
 PARTNER COAL CO., E.D.E APOLLO, PA.
 ALLEGHENY TWP, WESTMD. CO., PA.
 SCALE: 1" = 200' DEC. 15, 1967
 BY: CHAS. S. KRAVETSKY E.S. 12782-E
 BOX 194, AVONMORE, PA.

MINE TELE: 412 295 2263



- FAN INFORMATION —**
1. 4.0 FT. AERIAL FLOW FAN.
 2. OPERATES: EXHAUSTING.
 3. SURFACE INSTALLATION.
 4. OFFSET 15 FT. FROM FARTHEST SIDE OF MINE OPENING.
 5. FIREPROOF AIR DUCT.
 6. AUDIBLE & VISUAL ALARM DEVICE.
 7. PRESSURE RELEASE DOORS.

