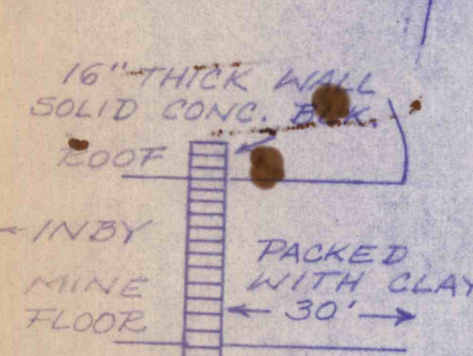
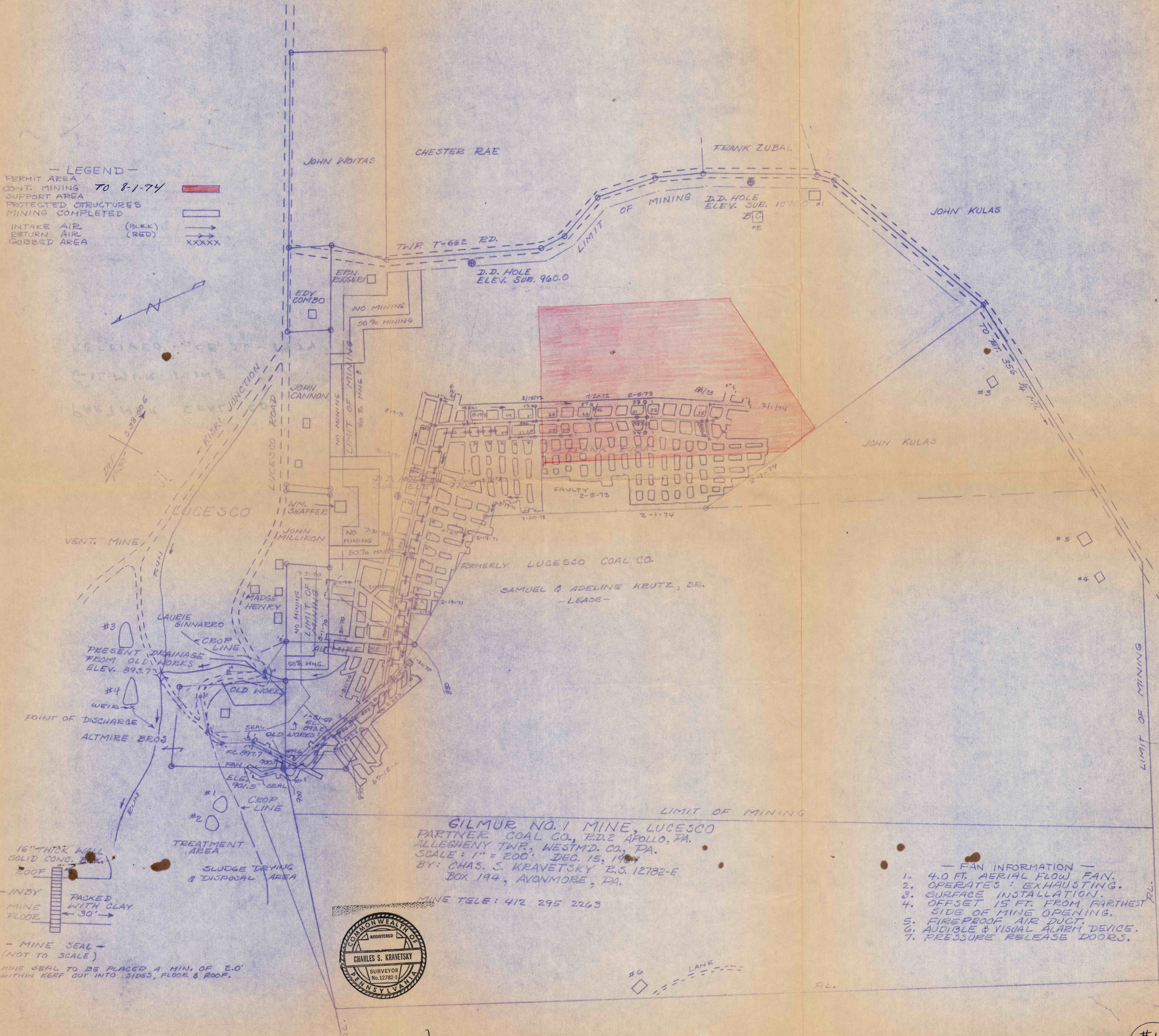
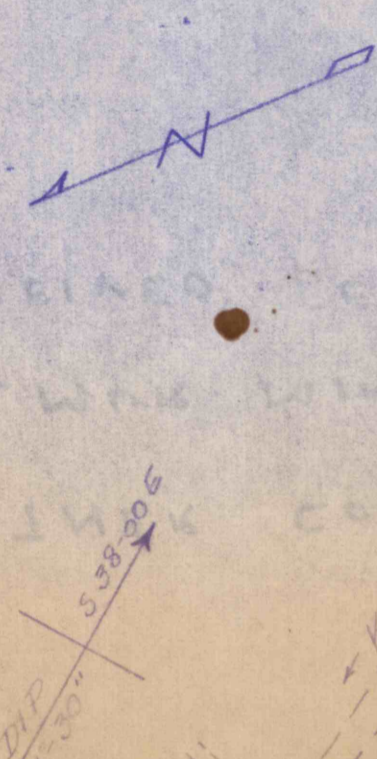
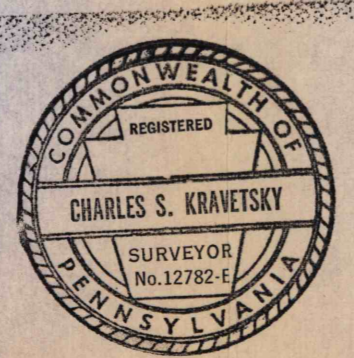


— LEGEND —
 PERMIT AREA TO 8-1-74
 CONT. MINING
 SUPPORT AREA
 PROTECTED STRUCTURES
 MINING COMPLETED
 INTAKE AIR (BLACK) →
 RETURN AIR (RED) →
 GOBBED AREA XXXXX



— MINE SEAL —
 (NOT TO SCALE)
 MINE SEAL TO BE PLACED A MIN. OF 2.0' WITHIN KERF CUT INTO SIDING, FLOOR & ROOF.

GILMUR NO. 1 MINE, LUCESCO
 PARTNER COAL CO., P.O. 2 APOLLO, PA.
 ALLEGHENY TWP, WESTMD. CO., PA.
 SCALE: 1" = 200' DEC. 15, 1974
 BY: CHAS. S. KRAVETSKY E.S. 12782-E
 BOX 194, AVONMOORE, PA.



- FAN INFORMATION —**
1. 4.0 FT. AERIAL FLOW FAN.
 2. OPERATES: EXHAUSTING.
 3. SURFACE INSTALLATION.
 4. OFFSET 15 FT. FROM FARTHEST SIDE OF MINE OPENING.
 5. FIREPROOF AIR DUCT.
 6. AUDIBLE & VISUAL ALARM DEVICE.
 7. PRESSURE RELEASE DOORS.

2-1-74

Charles S. Kravetsky

#1106
 7-23-99
 C.C.