

GATEWAY COAL COMPANY
GATEWAY MINE, R.D. #1, BOX 197, PROSPERITY, PA 15239
PITTSBURGH SEAM, OWNED BY T.E.R. RESOURCES, INC.
AS OF FEBRUARY 1, 1993 (PREVIOUS OWNER: HILLMAN COAL & COKE CO.)

WASHINGTON TWP.
SURVEY DATE: 3-28-90
FINAL MAP

GREENE COUNTY SCALE: 1" = 200'

CONTEMPLATED MINING: NONE

SUPPORT AREA

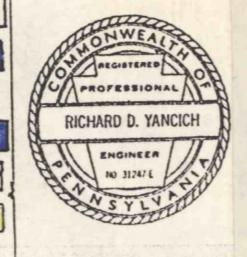
PROTECTED STRUCTURES

MINING COMPLETED AREA

NO MINING

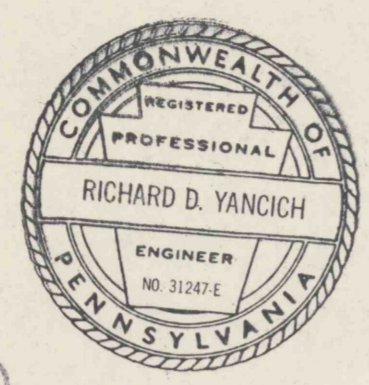
PREVIOUS SIX MONTHS MINED AREAS

COUNTY TAX PARCEL NUMBER 2401-000

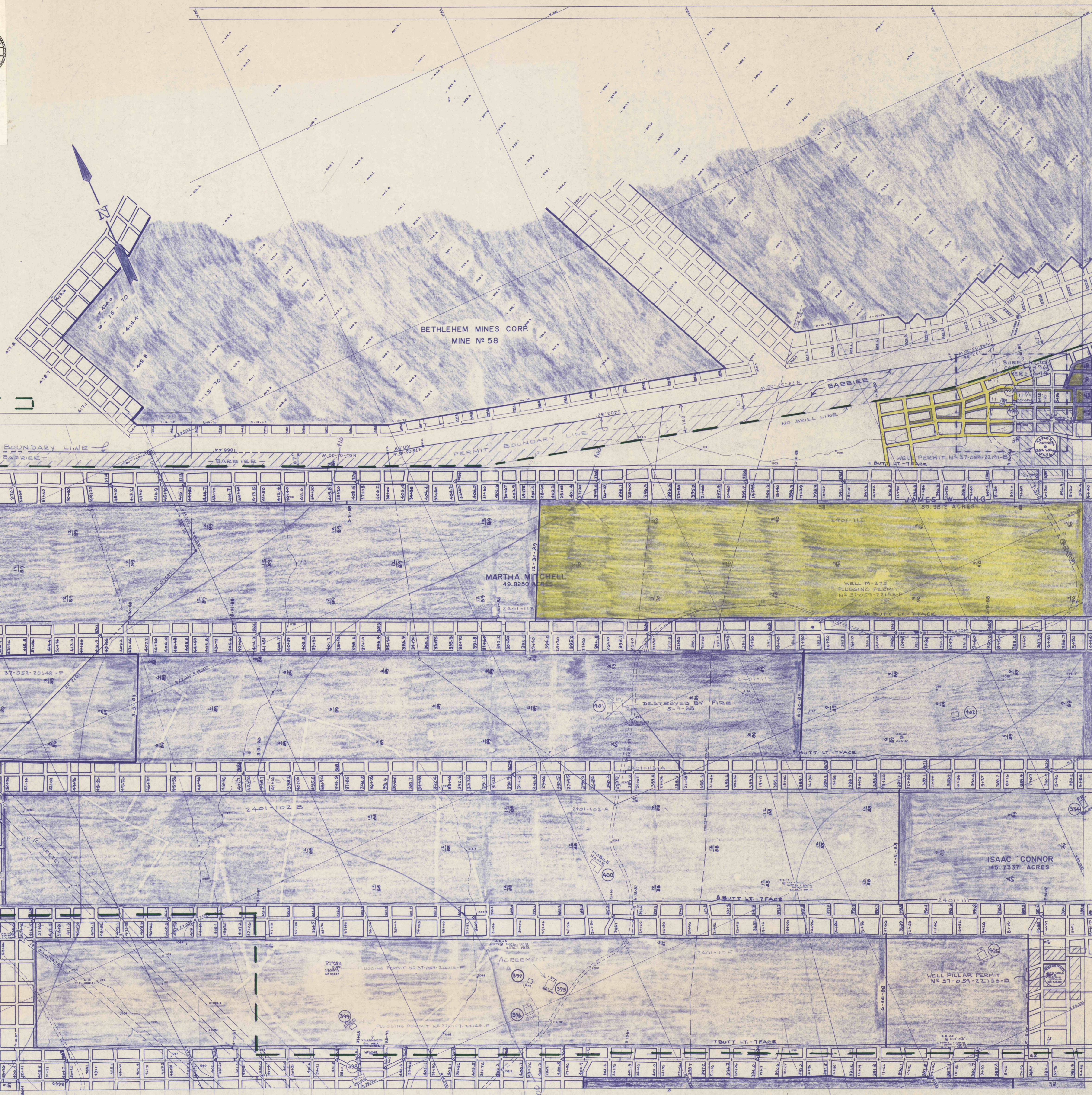


THE CALCULATED SUPPORT AREA IS ESTABLISHED USING THE FORMULAS FROM TITLE 19, CHAPTER 89.143 (1)(A)-(D) AND (1)(A)-(D).
THE ACTUAL SUPPORT AREA WILL AT ALL TIMES, BE NO LESS THAN THE CALCULATED SUPPORT AREA. THE ACTUAL SUPPORT AREA MAY BE LARGER THAN THE CALCULATED SUPPORT AREA WHEN A MINING DIMENSION OF A SUPPORTING PILLAR IS GREATER THAN THE DIMENSION OF A SUPPORTING PILLAR AS A RESULT OF THE PROTECTION AREA PROJECTION CALCULATION.

Richard P. Yanchich



RECEIVED
JUL 31 1990
Dept. of Environmental Resources
McMurray District Office



SHEET NO. 19
GATEWAY MINE

5 YEAR SUBSIDENCE CONTROL PLAN BOUNDARY

FIT TO SHEET NO. 20

FIT TO SHEET NO. 17

FIT TO SHEET NO. 17

SHEET NO. 16
GATEWAY MINE

FIT TO SHEET NO. 12

FIT TO SHEET NO. 12

FIT TO SHEET NO. 12