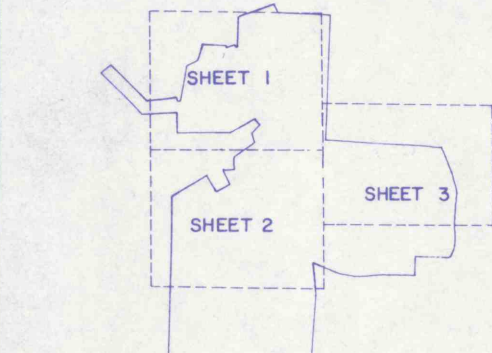
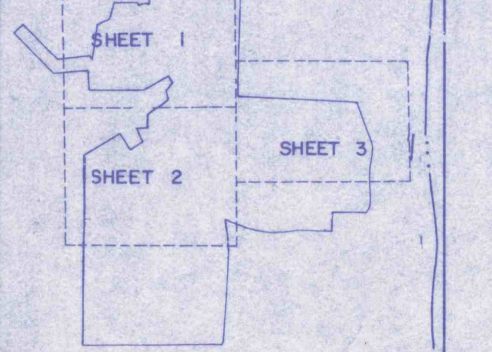


RECEIVED
DEC 30 1985
Dept. of Environmental Resources
McMurry District Office

- LEGEND
- INTAKE AIR
 - RETURN AIR
 - INTAKE ESCAPEWAY
 - ALTERNATE ESCAPEWAY
 - RES. WELLS
 - OVERCAST
 - GAS WELL
 - WELLS FOR PERMANENT STOPPING
 - CHECK CURTAIN
 - SOON
 - O.B.T. RESIDUAL EVALUATION (REV.)



PREPARED BY
VAPCO ENGINEERING
PUNXSUTAWNEY PENNSYLVANIA

REVISIONS	3 - 21 - 86	DRAWN BY	RH
	6 - 15 - 86	CHECKED BY	EM
	12 - 22 - 85	DATE	10/26/84
		SCALE	1" = 1200'

APPROVED: _____
DATE: _____

APPROVED: *[Signature]*
DATE: 10-25-86 REG. NO. 25746-C

NOTE: Mine site locations & elevations from survey by Plateau Corporation & G R Mining Company.

EXISTING DEEP MINE
LOWER FREEPORT COAL SEAM
G R MINING COMPANY
FAIRVIEW NO. 5 DEEP MINE
PORTER & PERRY TWP. JEFFERSON CO.

SHEET 1 OF 1

FINAL
CLOSURE
EXTENT