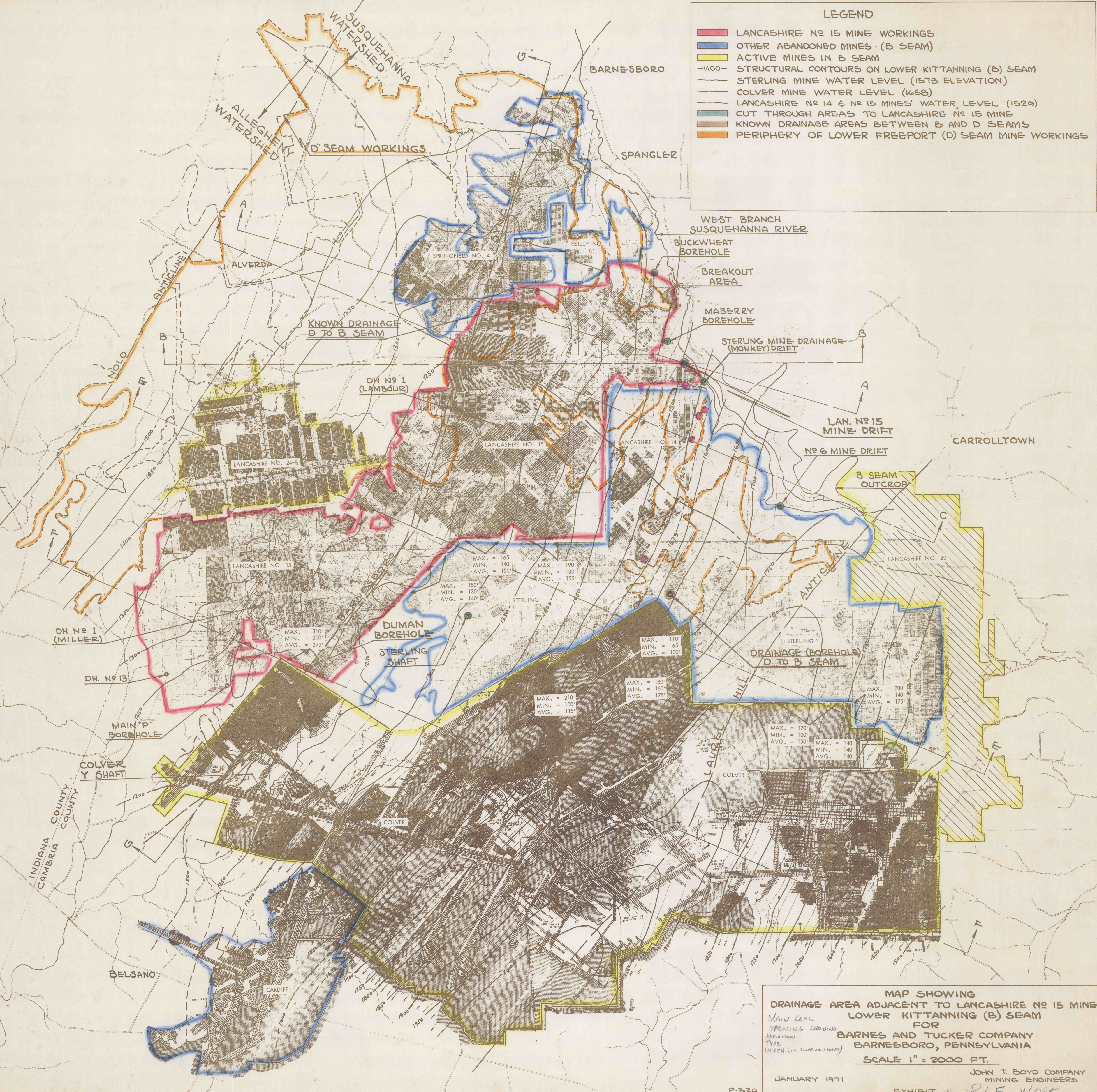




- LEGEND**
- LANCASHIRE NO 15 MINE WORKINGS
 - OTHER ABANDONED MINES - (B SEAM)
 - ACTIVE MINES IN B SEAM
 - 1400- STRUCTURAL CONTOURS ON LOWER KITTANNING (B) SEAM
 - STERLING MINE WATER LEVEL (1573 ELEVATION)
 - COLVER MINE WATER LEVEL (1658)
 - LANCASHIRE NO 14 & NO 15 MINES' WATER LEVEL (1529)
 - CUT THROUGH AREAS TO LANCASHIRE NO 15 MINE
 - KNOWN DRAINAGE AREAS BETWEEN B AND D SEAMS
 - PERIPHERY OF LOWER FREEPORT (D) SEAM MINE WORKINGS



MAP SHOWING
DRAINAGE AREA ADJACENT TO LANCASHIRE NO 15 MINE
LOWER KITTANNING (B) SEAM
FOR
BARNES AND TUCKER COMPANY
BARNESBORO, PENNSYLVANIA
 SCALE 1" = 2000 FT.
 JOHN T. BOYD COMPANY
 MINING ENGINEERS
 JANUARY 1971
 EXHIBIT 1 RLF WORK