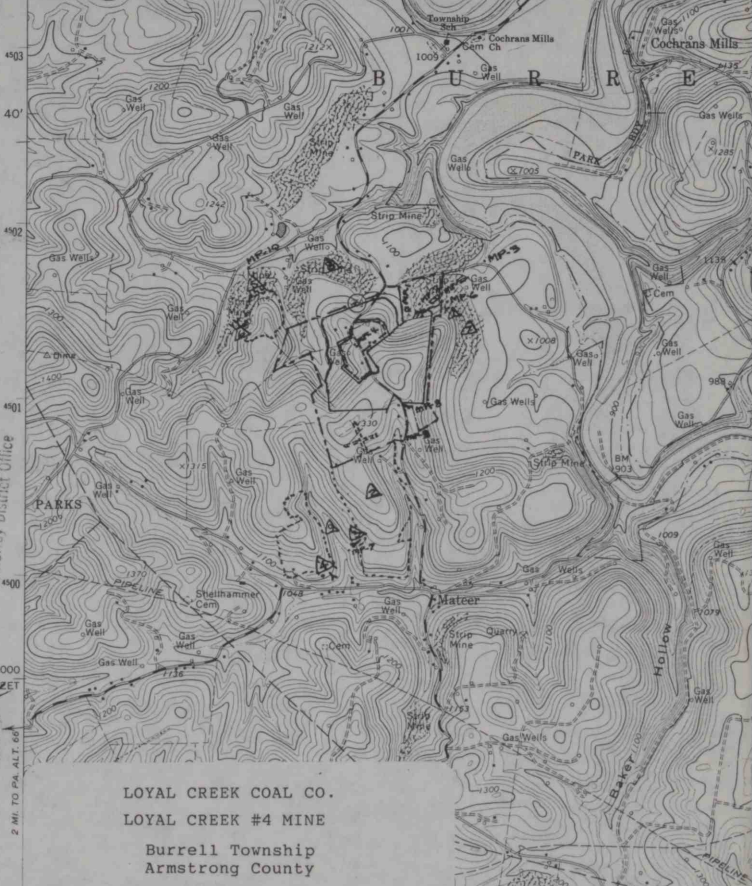



RECEIVED
FEB 06 1989

Dept. of Environmental Resources
McMurry District Office



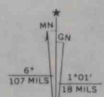
LOYAL CREEK COAL CO.
LOYAL CREEK #4 MINE
Burrell Township
Armstrong County

- LEGEND**
- Whitesburg Quadrangle
 - Property Line
 - Subsidence/Permit Bound.
 - Underground Mine
 -  Mine Index Number
 - MP-1 Monitoring Point

40°37'30"
79°

CHURCH (PA. 56) 1.6 MI. S30 27°30"

3250
WANDERER 17 SE
5000 11 SE



UTM GRID AND 1973 MAGNETIC NORTH
DECLINATION AT CENTER OF SHEET

100-meter contour interval, contour interval 200 feet, zone 17, shown in blue
Fine red dashed lines indicate selected fence and field lines where generally visible on aerial photographs. This information is unchecked
Areas covered by dashed light-blue pattern are subject to controlled inundation