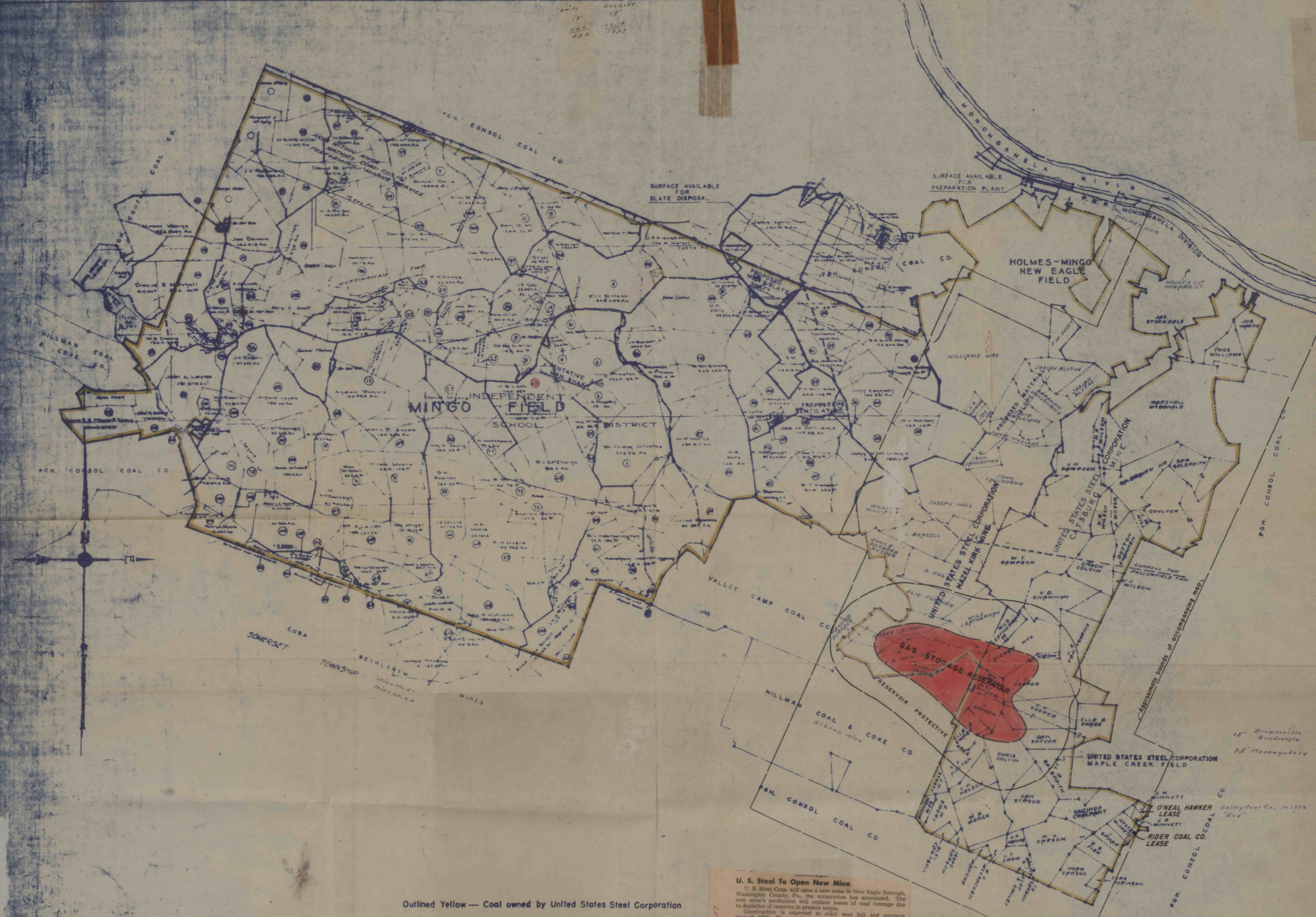


AMITY 78'
 HOCKLEY 78'
 480 12.14
 480 72.67



Outlined Yellow — Coal owned by United States Steel Corporation.

U. S. Steel To Open New Mine
 U. S. Steel Corp. will open a new mine in New Eagle Borough, Washington County, Pa., the corporation has announced. The new mine's production will replace losses of coal tonnage due to depletion of reserves in present mines.
 Construction is expected to start next fall and continue through 1958. First production from the new unit is anticipated in 1959. Annual production at the mine is expected to be approximately 500,000 tons of mine-run coal. The operation will be known as the Maple Creek Mine and the coal will be used at the corporation's coke plant at Clairton Works, eight miles down the Monongahela River from river facilities of the new mine.
 Corporation officials said the new mine is the first step in development of a reserve area of about 15,000 acres of Pittsburgh seam coal.

UNITED STATES STEEL CORPORATION
MINGO-MAPLE CREEK COAL FIELDS
 SHOWING GENERAL LOCATION OF COLVIN UNDERGROUND GAS STORAGE RESERVOIR OF THE PEOPLES NATURAL GAS COMPANY.
 CARROLL, FALLOWFIELD, SOMERSET & NOTTINGHAM TWPS. WASHINGTON CO., PA.
 MAY 1956

0 500 1000 2000 3000 4000 5000
 SCALE IN FEET
 1" = 1000 FEET

DRAWING NO I-5-138

MD-17