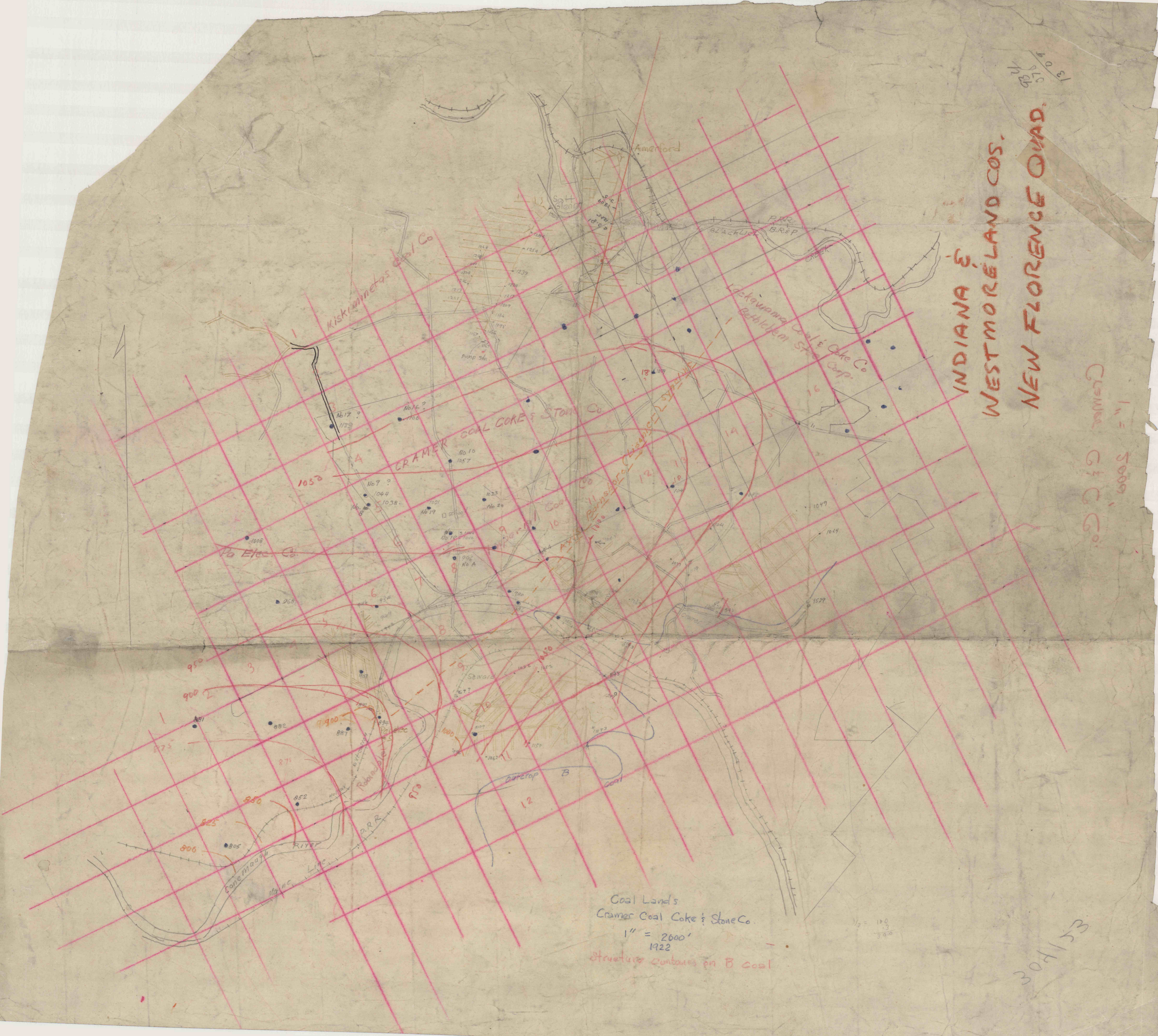


130  
130  
130

INDIANA &  
WESTMORELAND COS.  
NEW FLORENCE QUAD.

1" = 5000'  
Cramer C & S Co.



Coal Lands  
Cramer Coal Coke & Stone Co.  
1" = 2000'  
1922  
Structures Contained on B Coal

1/3 = 100  
390

CS/1/100