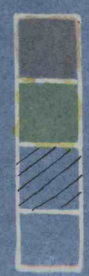




LEGEND



Fee Coal & Surface
 Coal Rights
 Coal Worked out
 Coal Remaining

3253 Acres.
 Thickness of Vein 30"
 Assessed \$57,921.00

WATSON COAL COMPANY
 WHITE STATION
 Gonemaugh Twp., Indiana County, Pa.
 OUTLINE MAP OF PROPERTY
 Scale - 1" = 2000'
 Albert Smith, C.E.,
 4/6/20 Saltsburg, Pa.