

WILLIAM SPRINGER  
50.00 A.

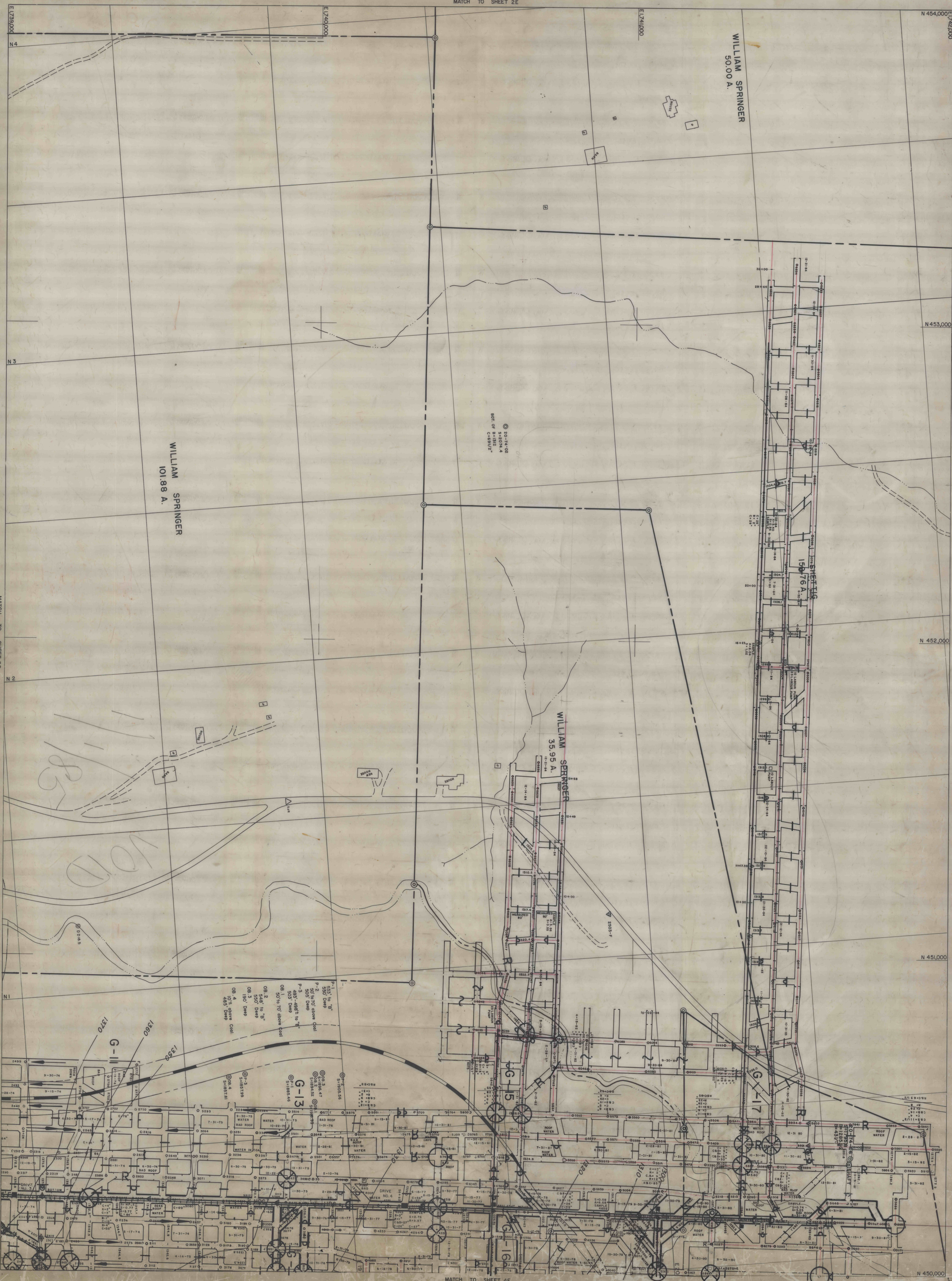
WILLIAM SPRINGER  
101.88 A.

30-74-02  
550' DIA. 4  
BOT. OF B. 1382'  
C-25912'

MATCH TO SHEET 3F

WILLIAM SPRINGER  
35.95 A.

MATCH TO SHEET 3D



BARNES & TUCKER COMPANY  
LANCASHIRE NO. 20 MINE  
EAST CARROLL TOWNSHIP, CAMBRIA COUNTY, PENNSYLVANIA  
SCALE: 1"=100'  
DATE: JULY 1976