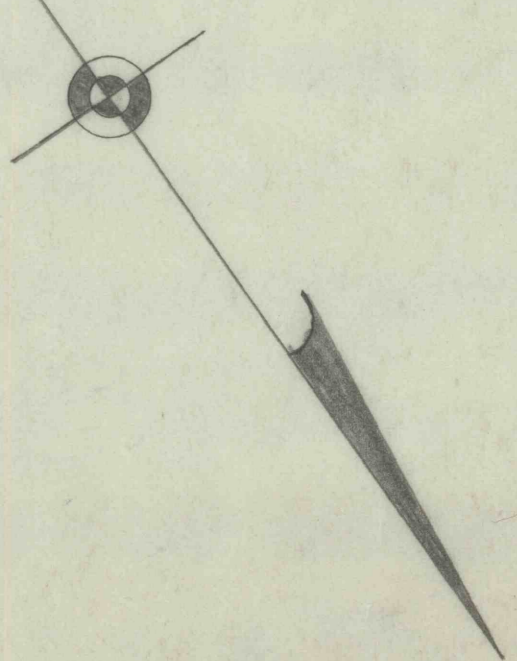


J. H. BROWN TR.  
Now  
JAMES LEAMER

G. B. SHERLEY TR.  
Now  
JOSEPH MAGLICH

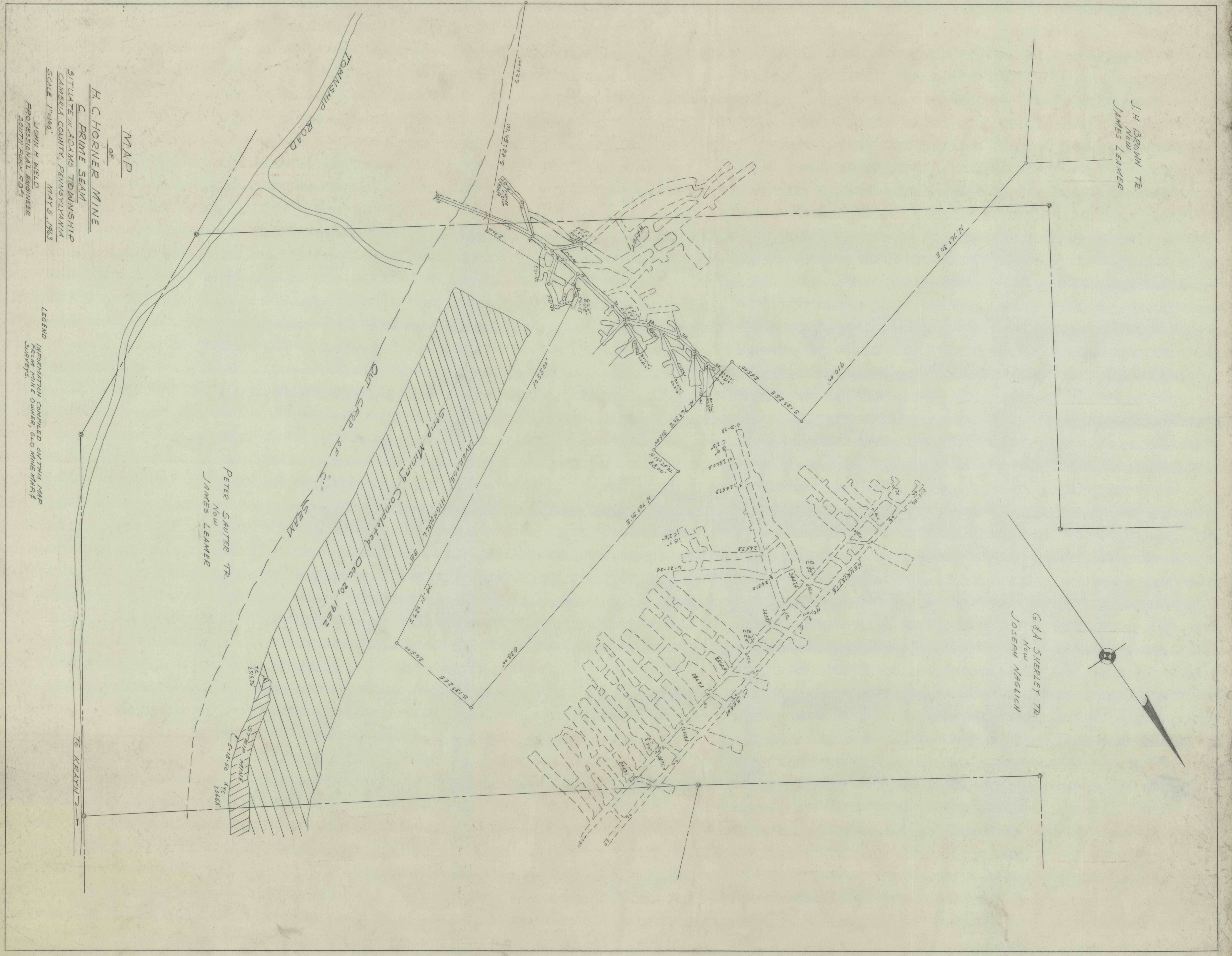


MAP  
OF

H. C. HORNER MINE  
OF  
C PRIME SEAM  
SITUATE IN ADAMS TOWNSHIP  
CAMBRIA COUNTY, PENNSYLVANIA  
SCALE 1"=100'  
MAY 5, 1923  
JOHN H. WELD  
PROFESSIONAL ENGINEER  
SOUTH FORK RD.

PETER SAUTER TR.  
Now  
JAMES LEAMER

LEGEND INFORMATION COMPILED ON THIS MAP  
FROM MINE OWNER, OLD MINE MAPS  
SURVEYS



TO KRATON