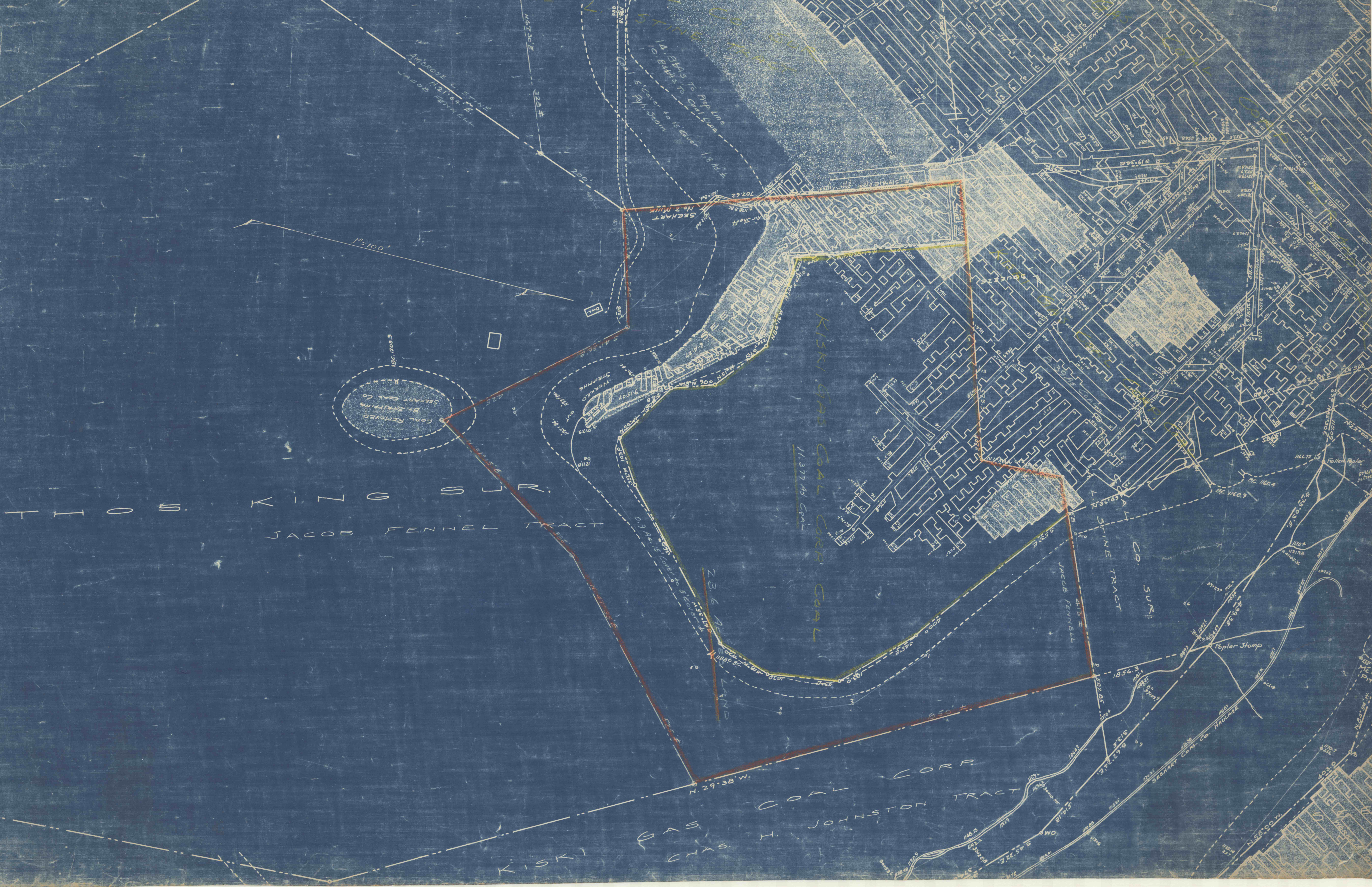


IRWIN  
AMBERSE  
L. STINE



THO S. KING SUR.  
JACOB FENNEL TRACT

KISKI GAS COAL CORP. COAL

KISKI GAS CHAS.

COAL CORP.  
JOHNSTON TRACT

L. STINE TRACT  
CO. SURI

COAL REMOVED  
BY STEPHENS CO.

14 SHAS To Pop Line  
10 SHAS To Coal Line  
5' cover to 15 cover 18 ft  
Pop. Seam

AMBERSE L. STINE  
N 21° 04' E  
JACOB FENNEL

11-100

126.1203.5

SEKART  
No. 2 MINE

WORKING  
DRIPPINGS

23.6 ACRES  
LAND

N. 29° 38' W.

850 ±

850 ±

1080

N 58° 00' W

Poplar Stump

1200 ±

1120 ±

1144.72

1160 ±

1120 ±

1144.72

1120 ±

1144.72

1120 ±

1144.72

1120 ±

1144.72

1120 ±

1144.72

1120 ±

1144.72

1120 ±

1144.72

1120 ±

1144.72

1120 ±

1144.72

1120 ±

1144.72