

SHEET NO. 5 -

DUNKARD MINING COMPANY

DUNKARD MINE NO. 2

SEWICKLEY COAL SEAM

DUNKARD TOWNSHIP

GREENE COUNTY, PENNSYLVANIA

MSHA ID # 36-01301

CMAP # 30841309

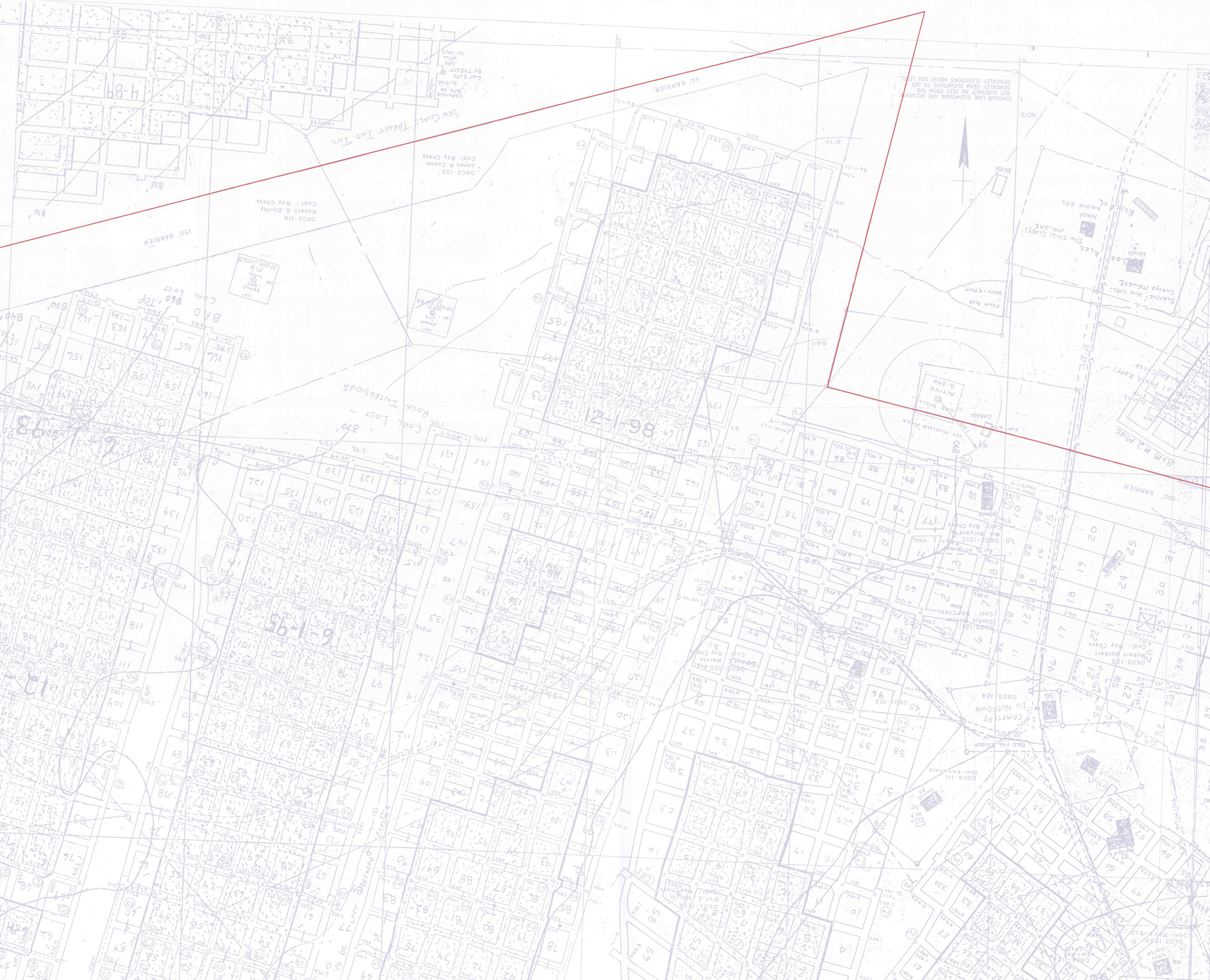
SCALE: 1"=100'

Prepared by:

GARBART CONSULTING SERVICES, INC.

P.O. BOX 4-A, LEMONT FURNACE, PA. 15456

(724) 439-1313



NOTE:  
CONTOUR LINE ELEVATIONS ARE ACCURATE  
SEWICKLEY SEAM ELEVATIONS TO GET  
BUT SUBTRACT 50 FEET FROM THE  
SEWICKLEY SEAM ELEVATIONS TO GET  
SEWICKLEY SEAM ELEVATIONS ABOVE SEA LEVEL

