

11

8000.0 S

8500.0 S

9000.0 S

12500.0 E

12500.0 E

12500.0 E

J. M. PARK

W. J. JOHNSTON
157.0 AC.

R. L. PARK
101 AC. 30R

R. L. PARK
64.07 AC.

HENRY CANNON
42.84 AC.

ELEANOR F. McHARY
107 A. 1 R. 37 R.

JOS. McHARY
134.75 AC.

G. B. McLELLAND

J. M. PARK

39.92 AC.

86.69 AC.

J. & C. McMURRAY
185 A. 54 P.

750

D. D. HOLE #273
SURF. 11477
B.C. 737
S. 132

JAS. SPEER
130.40 AC.

GIANT OAKS

ELEANOR F. McHARY
107 A. 1 R. 37 R.

JNO. A. CRAWFORD
50.46 AC.

JNO. A. CRAWFORD
55.125 AC.

JNO. A. CRAWFORD
50.0 AC.

JOHN B. McBRIDE
102.923 AC.

JNO. M. WATSON
90.0 AC.

KERR SHAFT

J. W. FAWCETT
73.86 AC.

JAS. JOHNSTON
51.6 AC.

G. M. JOHNSTON
51.6 AC.

IDA B. KENNEL
23.76 AC.

JANE M. DEVORE
84.05 AC.

JOHN FIFE
261.51 AC.

ADA M. FIFE
108.36 AC.

J. M. THOMAS
100 A. 44 P.

BELL MATTHEWS
90.48 AC.

ADA M. FIFE
108.36 AC.

McMURRAY & CROUCH
99.325 AC.

A. McMURRAY

JAS. JOHNSTON
65.719 AC.

PHOEBE K. SMITH
31 A. 118 P.

PHOEBE K. SMITH
21 AC. 80 R.

JAS. JOHNSTON
65.719 AC.

JAS. PHILLIPS
51.76 AC.

VIRGINIA M. FLACK
111 AC. 23 R.

800

W. F. SPARKS
25.0 AC.

W. F. SPARKS
34.0 AC.

THOMAS
THOMAS (AMS)

THOMAS
148.72 AC.

THOMAS PORTAL

WM. M. SMITH ETUX ETAL
96.174 AC.

THOMAS PORTAL

J. LAWRENCE & CO. ETAL.

GEO. BOYKA
24.30 AC.

ALEX DEVORE
31 A. 2 R. 6 P.

WM. H. LAWRENCE
136 A. 2 R. 14 R.

McMURRAY & CROUCH
99.325 AC.

A. McMURRAY

JAS. JOHNSTON
65.719 AC.

PHOEBE K. SMITH
31 A. 118 P.

PHOEBE K. SMITH
21 AC. 80 R.

JAS. JOHNSTON
65.719 AC.

JAS. PHILLIPS
51.76 AC.

VIRGINIA M. FLACK
111 AC. 23 R.

800

W. F. SPARKS
25.0 AC.

W. F. SPARKS
34.0 AC.

THOMAS
THOMAS (AMS)

THOMAS
148.72 AC.

THOMAS PORTAL

WM. M. SMITH ETUX ETAL
96.174 AC.

THOMAS PORTAL

J. LAWRENCE & CO. ETAL.

GEO. BOYKA
24.30 AC.

ALEX DEVORE
31 A. 2 R. 6 P.

WM. H. LAWRENCE
136 A. 2 R. 14 R.

A. FRICKER
13.56 AC.

A. NEEBLING
12.9 AC.

T. R. PHILLIPS
20.36 AC.

NEEBLING MRS.
8.43 AC.

W. S. LOGAN
31.85 AC.

Mc MILLAN
82.375 AC.

SARAH GIBBS
23.09 AC.

BENJ. GIBBS
26.0 AC.

HENDERSON
40.34 AC.

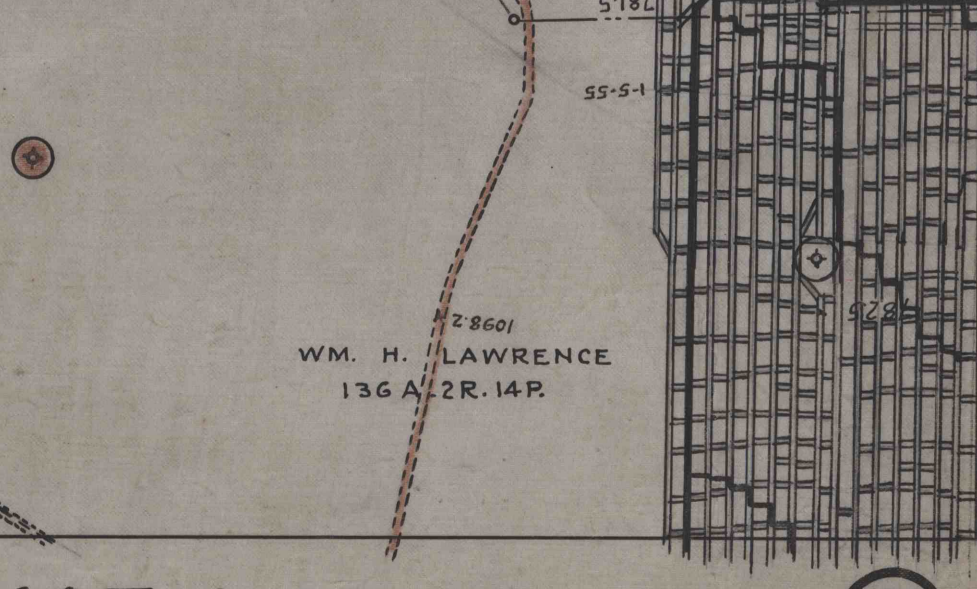
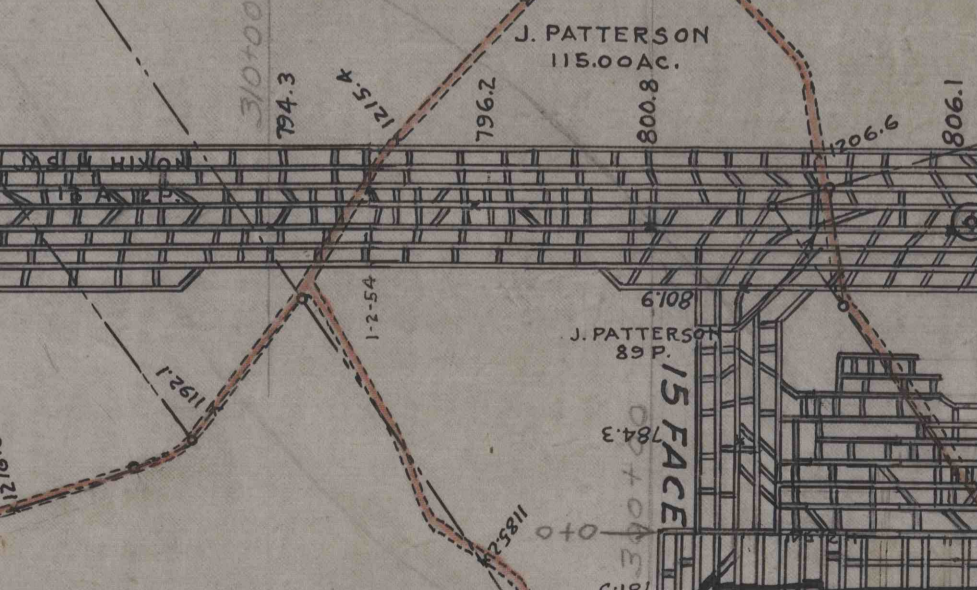
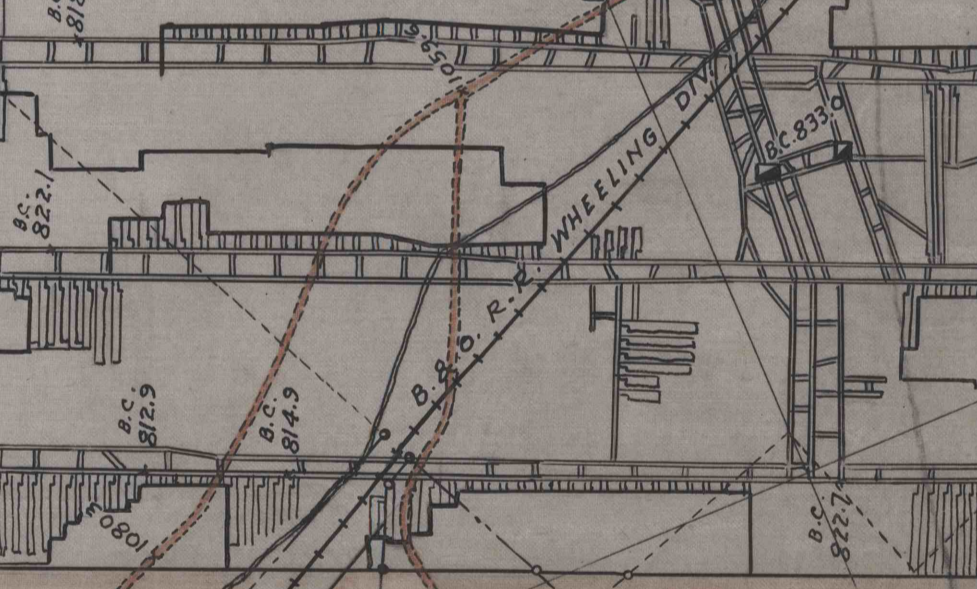
JOHN M. ROSS
48.75 AC.

SCOTT MRS.
76.0 AC.

COWAN - HENDERSON
30.0 AC.

H. H. RAHEY
17.11 AC.

ECLIPSE GAS COAL CO.



MATHIES MINE

FIT TO 3

FIT TO 4

FIT TO 6

5