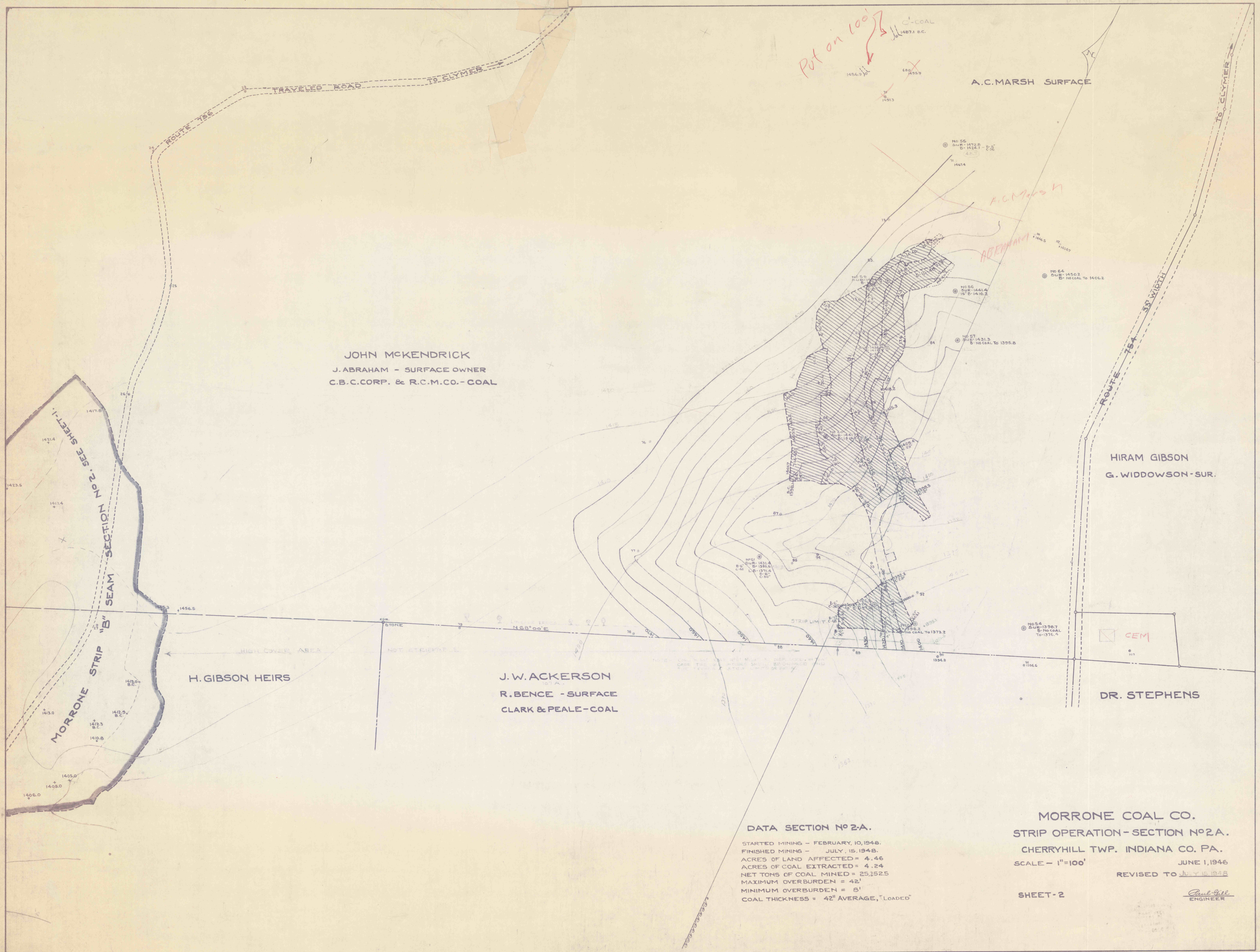


OPEN ALL OVER WIRE
WELCOME COST TO

Put on 100' \rightarrow



DATA SECTION NO 2-A.
 STARTED MINING - FEBRUARY, 10, 1948.
 FINISHED MINING - JULY, 15, 1948.
 ACRES OF LAND AFFECTED = 4.46
 ACRES OF COAL EXTRACTED = 4.24
 NET TONS OF COAL MINED = 25,152.5
 MAXIMUM OVERBURDEN = 42'
 MINIMUM OVERBURDEN = 5'
 COAL THICKNESS = 42" AVERAGE, "LOADED"

MORRONE COAL CO.
STRIP OPERATION - SECTION NO 2A.
 CHERRYHILL TWP. INDIANA CO. PA.
 SCALE - 1"=100'
 JUNE 1, 1946
 REVISED TO JULY 16, 1948
SHEET - 2
Paul Gil
 ENGINEER