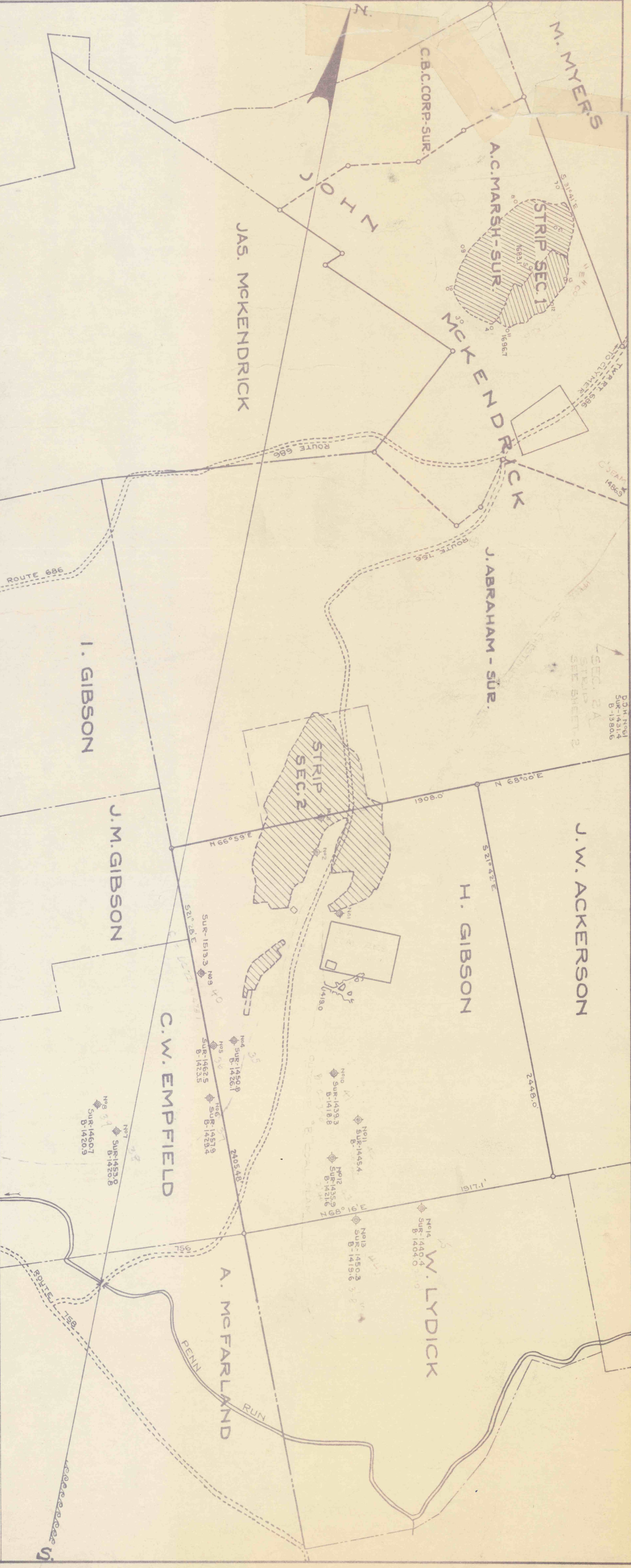
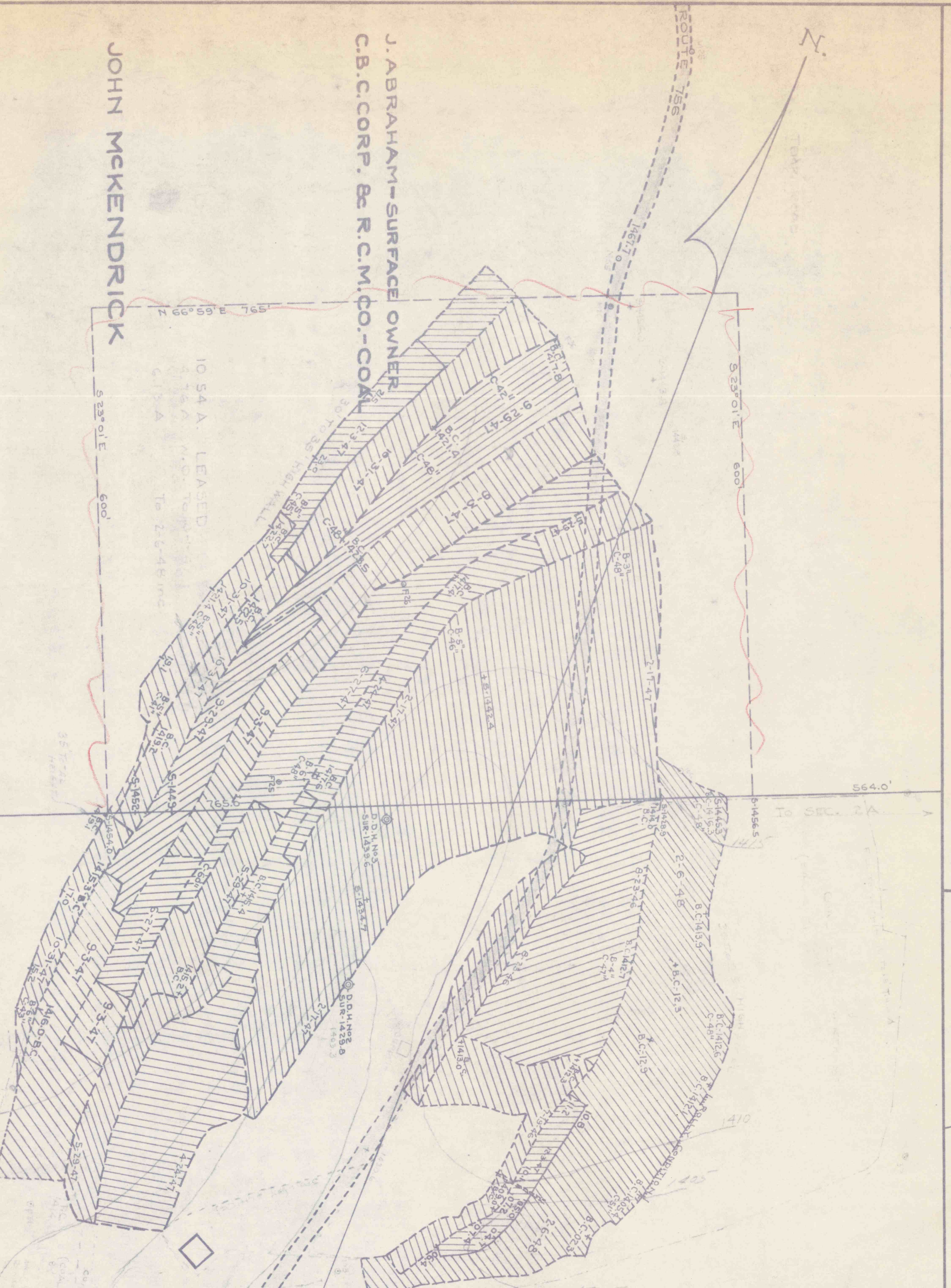


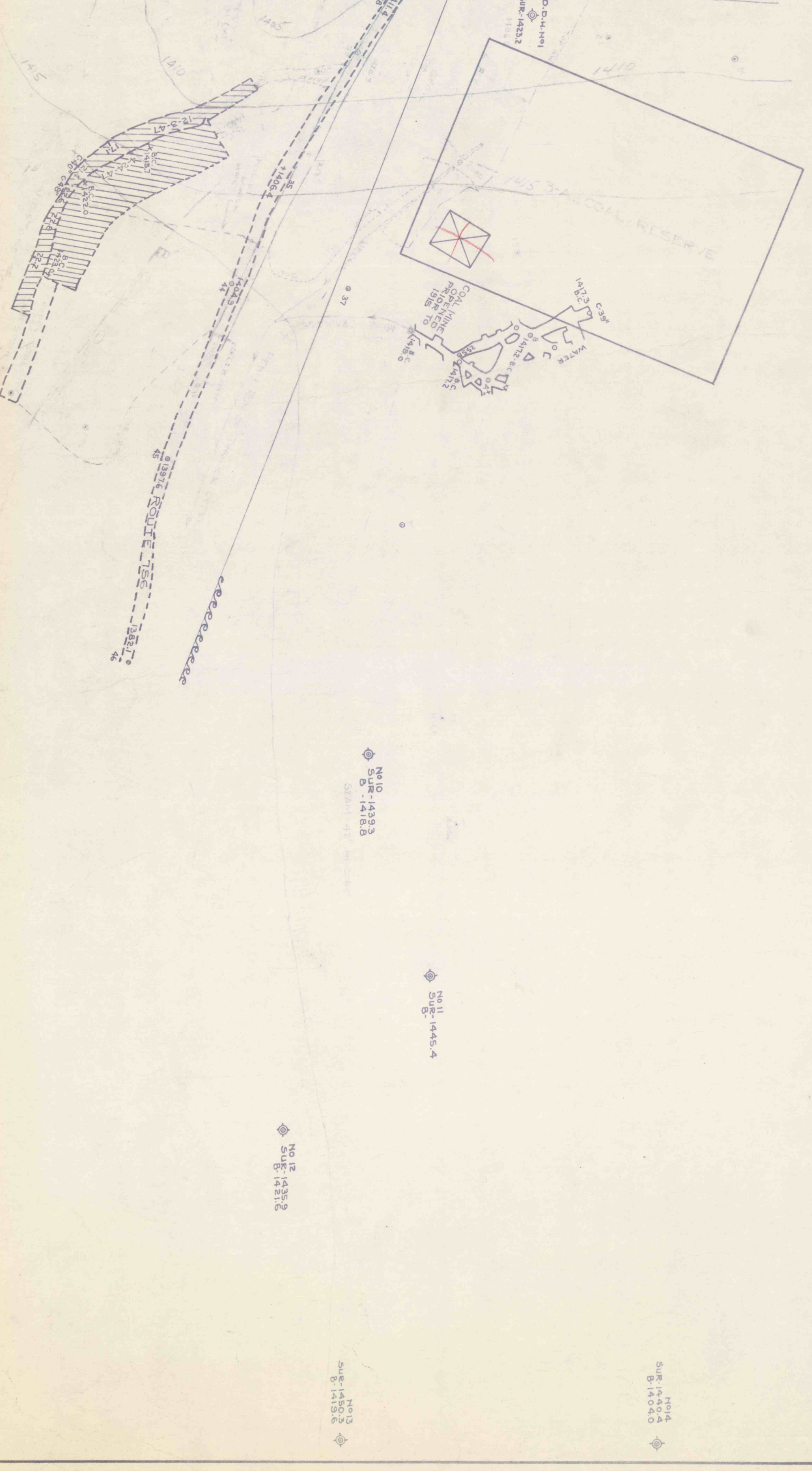
MORRONE COAL CO.
STRIP OPERATION - SECTION-NE1.
SCALE 1"=100'



LOCATION PLAN
MORRONE COAL CO.
OPEN PIT COAL MINES
CHERRYHILL TWP. INDIANA CO. PA.
SCALE 1"=400'
ALSO SEE PLAN ON SCALE OF 1000' = 1" FOR LOCATION.



DATA SECTION No 2
STARTED MINING JULY 9, 1946.
FINISHED MINING FEB. 6, 1948.
ACRES OF LAND AFFECTED = 13.95
ACRES OF COAL EXTRACTED = 13.86
NET TONS OF COAL MINED = 82,350,10
MINIMUM OVERBURDEN = 47'
COAL THICKNESS - 42" AVERAGE 'LADDER'



H. GIBSON HEIRS - COAL
M. POPSON HEIRS - SURFACE

MORRONE COAL CO.
STRIP OPERATION - SECTION NE2
SCALE 1"=100'

MORRONE COAL CO.
OPEN PIT COAL MINES
CHERRYHILL TWP. INDIANA CO. PA.
SCALES - AS SHOWN.
REVISED TO - FEB. 1, 1948

J. M. GIBSON

C. W. EMPFIELD

SHEET - 1
ENGINEER