

DISCLAIMER: This map is provided as a courtesy to the Pennsylvania Bureau of Deep Mine Safety by American Premier Underwriters, Inc. (fka The Penn Central Railroad Corporation) and its subsidiary United Railroad Corp., which own or owned, but do not operate, the coal assets depicted hereon.

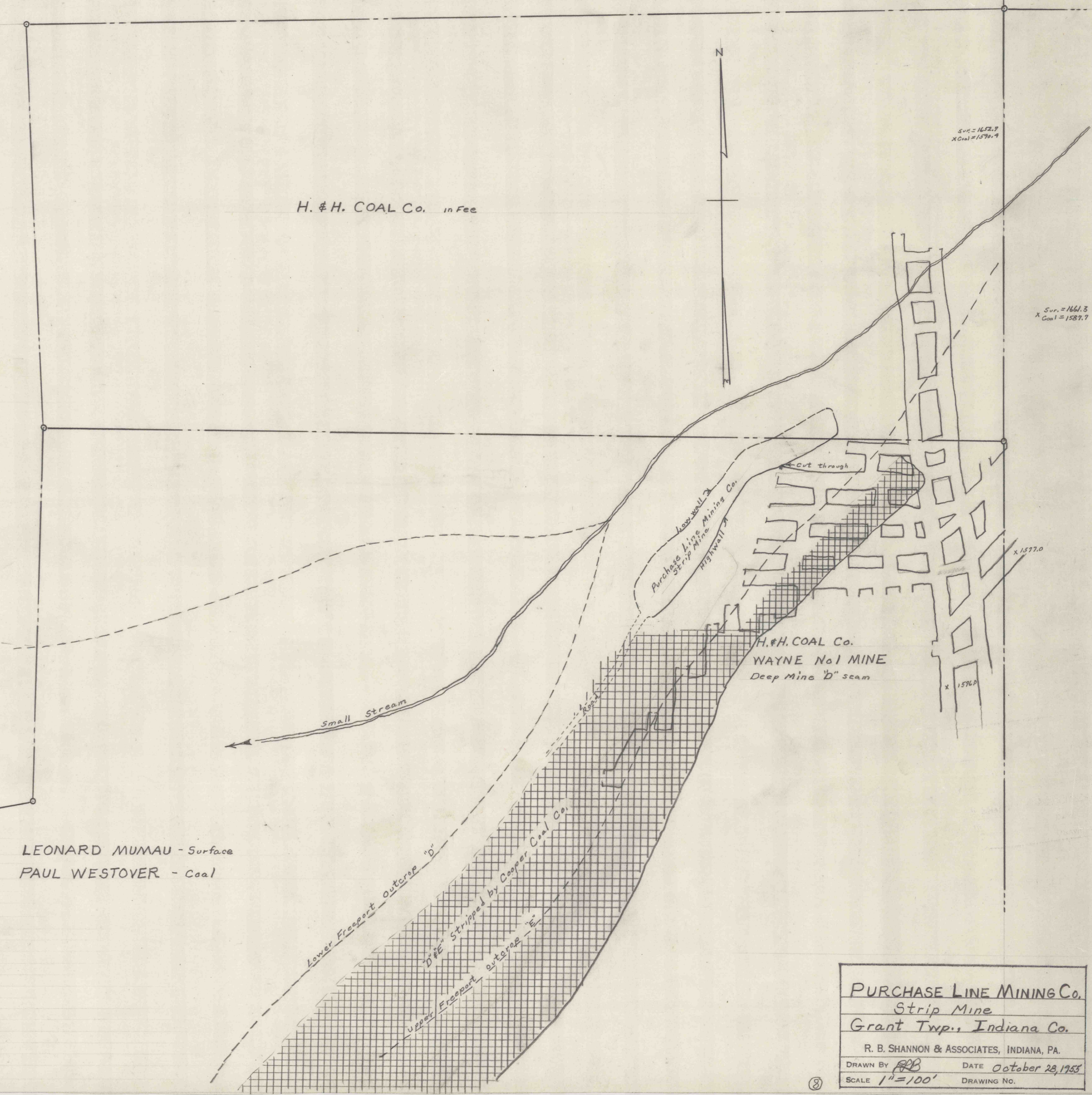
American Premier Underwriters, Inc. and United Railroad Corp. disclaim any representation or duty to any person as to the accuracy or completeness of this map or its fitness for any particular mining, safety or real estate related purpose. Any person who uses this map for any reason undertakes an independent duty to verify its accuracy and completeness, assumes all risks of its use, and agrees to hold American Premier Underwriters, Inc., United Railroad Corp. and their respective affiliates, shareholders, directors, officers and employees harmless from damage or liability arising from its use.

LEONARD MUMAU - surface
C.B.C. Corp. - Coal

Strip Mining began October 4, 1955

Name of Tract	Acres of Coal Uncovered	Tons of Coal Removed	Date of Survey
Paul Westover	0.43	1800	10-28-55
H.H. Coal Co.	0.06	None	10-28-55

LEONARD MUMAU - Surface
PAUL WESTOVER - Coal



PURCHASE LINE MINING Co.
Strip Mine
Grant Twp., Indiana Co.

R. B. SHANNON & ASSOCIATES, INDIANA, PA.

DRAWN BY *R.B.* DATE *October 28, 1955*

SCALE $1" = 100'$ DRAWING NO. *3*