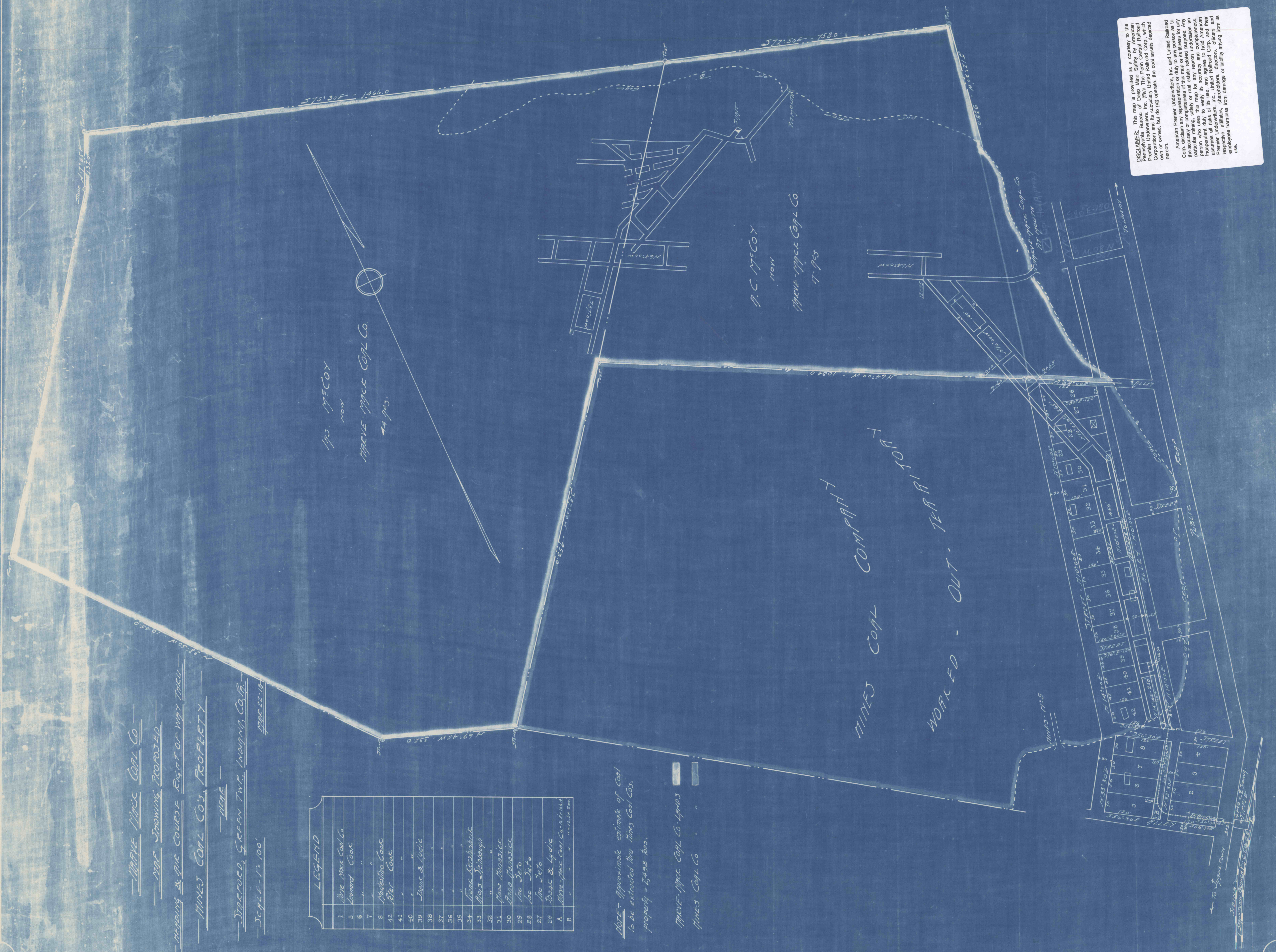


MARVE MACE COAL CO
MAP SHOWING PROPOSED
NEEDING & RIC COURSE RIGHT OF WAY THRU
MINES COAL CO'S PROPERTY
HERE
STACFORD, GREEN TWP, INDIANA CO. B.
SCALE - 1" = 100'

1	Marve Mace Coal Co
2	Conard Coals
3	"
4	"
5	McClinton Coals
6	Leary Coals
7	"
8	"
9	Mace & Leatic
10	"
11	"
12	"
13	"
14	"
15	"
16	"
17	"
18	"
19	"
20	"
21	"
22	"
23	"
24	"
25	"
26	"
27	"
28	"
29	"
30	"
31	"
32	"
33	"
34	"
35	"
36	"
37	"
38	"
39	"
40	"
41	"
42	"
43	"
44	"
45	"
46	"
47	"
48	"
49	"
50	"
51	"
52	"
53	"
54	"
55	"
56	"
57	"
58	"
59	"
60	"
61	"
62	"
63	"
64	"
65	"
66	"
67	"
68	"
69	"
70	"
71	"
72	"
73	"
74	"
75	"
76	"
77	"
78	"
79	"
80	"
81	"
82	"
83	"
84	"
85	"
86	"
87	"
88	"
89	"
90	"
91	"
92	"
93	"
94	"
95	"
96	"
97	"
98	"
99	"
100	"

NOTE - Approximate estimate of coal to be extracted thru Mines Coal Co's property = 2,400 tons.

MARVE MACE COAL CO - LYMOS
 MINES COAL CO



DISCLAIMER: This map is provided as a courtesy to the Bureau of Deep Mining, U.S. Department of the Interior, by American Premier Underwriters, Inc., a subsidiary of United Railroad Corporation and all do not operate the coal assets depicted hereon.
 American Premier Underwriters, Inc. and United Railroad Corp. disclaim any representation or duty to any person who uses this map for any reason other than the particular mining, safety or health related purpose. Any person who uses this map to verify its accuracy and who is independent of American Premier Underwriters, Inc., United Railroad Corp. and their respective affiliates, shall hold American Premier Underwriters, Inc., United Railroad Corp. and their respective affiliates harmless from damage or liability arising from its use.