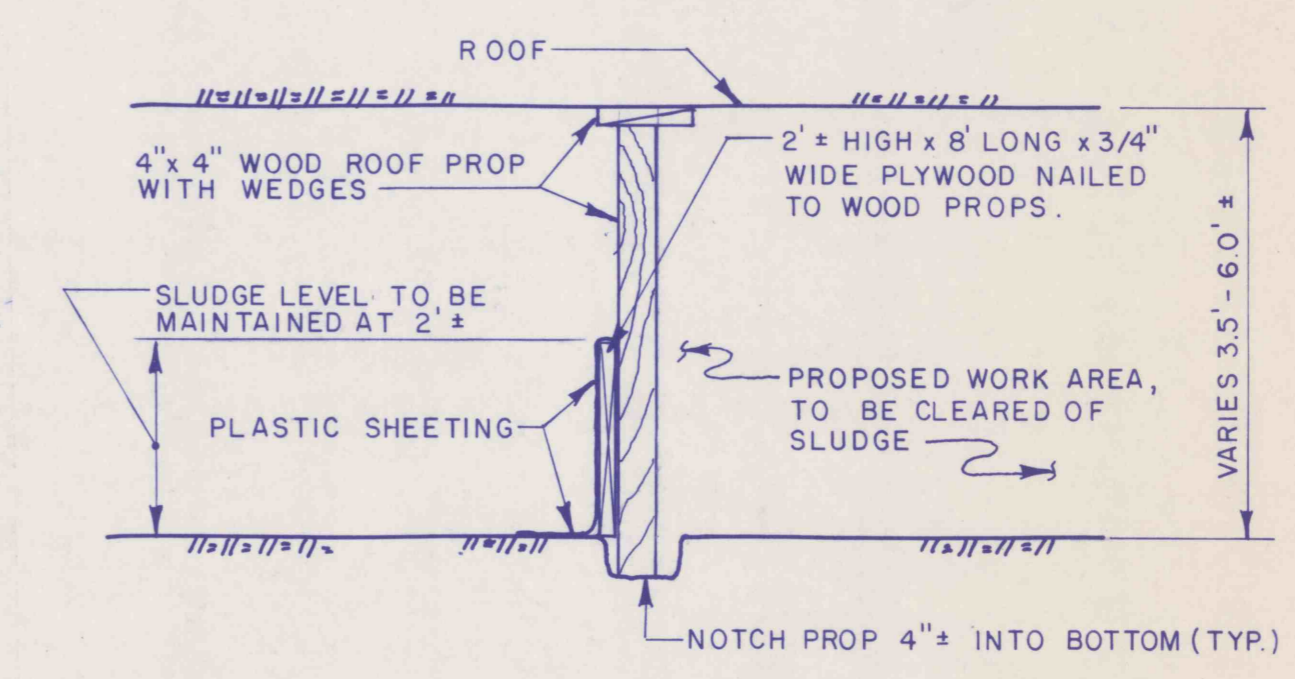
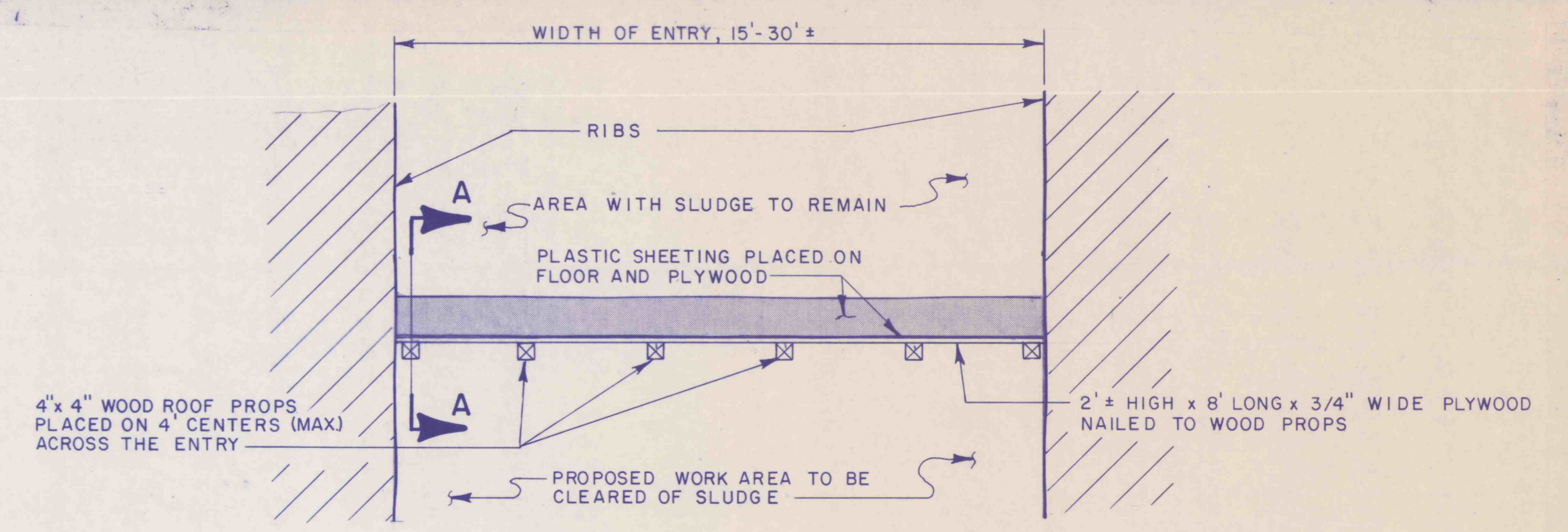
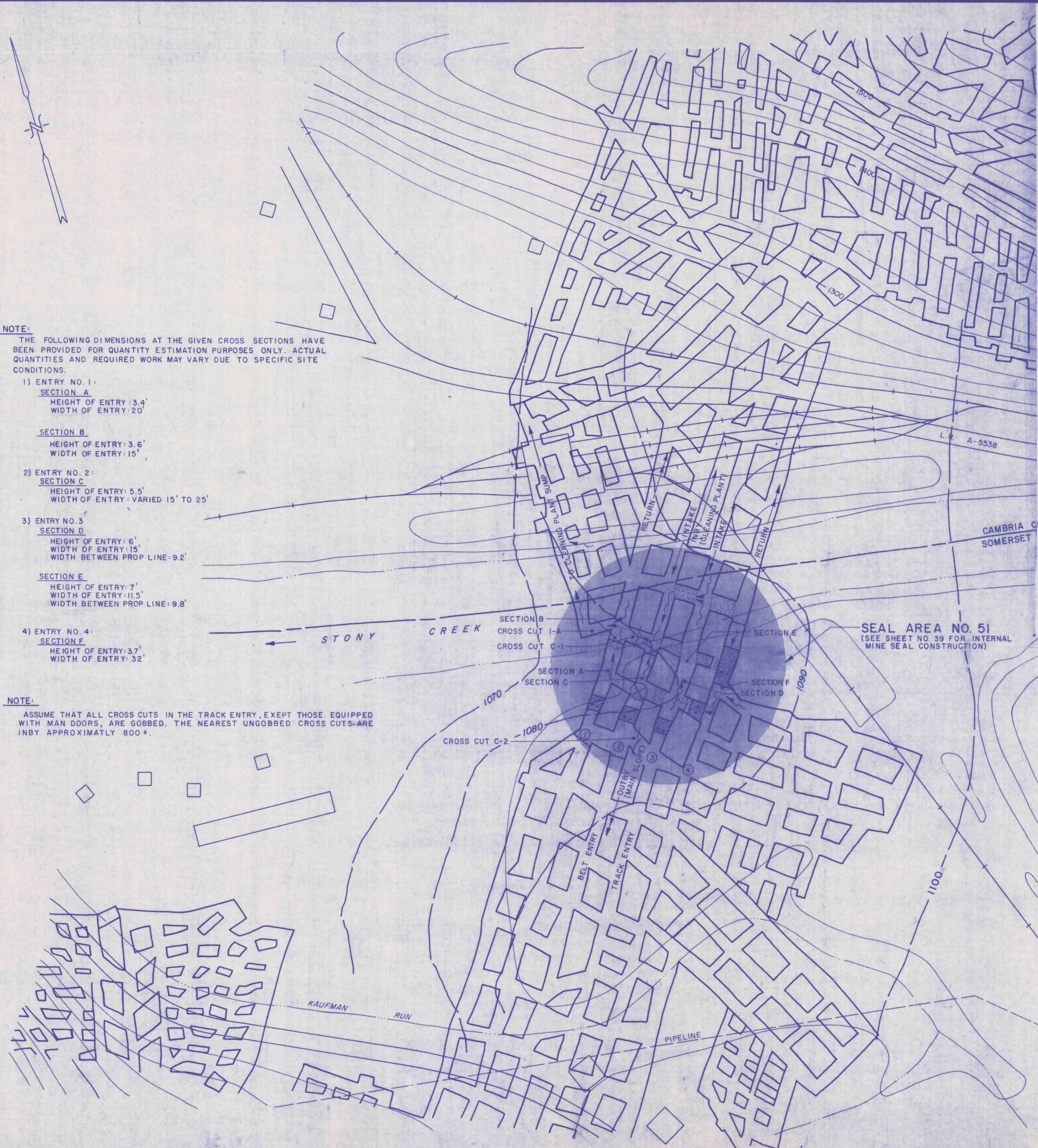


**NOTE:**  
THE FOLLOWING DIMENSIONS AT THE GIVEN CROSS SECTIONS HAVE BEEN PROVIDED FOR QUANTITY ESTIMATION PURPOSES ONLY. ACTUAL QUANTITIES AND REQUIRED WORK MAY VARY DUE TO SPECIFIC SITE CONDITIONS.

- 1) ENTRY NO. 1:  
SECTION A  
HEIGHT OF ENTRY: 3.4'  
WIDTH OF ENTRY: 20'
- SECTION B  
HEIGHT OF ENTRY: 3.6'  
WIDTH OF ENTRY: 15'
- 2) ENTRY NO. 2:  
SECTION C  
HEIGHT OF ENTRY: 5.5'  
WIDTH OF ENTRY: VARIED 15' TO 25'
- 3) ENTRY NO. 3:  
SECTION D  
HEIGHT OF ENTRY: 6'  
WIDTH OF ENTRY: 15'  
WIDTH BETWEEN PROP LINE: 9.2'
- SECTION E  
HEIGHT OF ENTRY: 7'  
WIDTH OF ENTRY: 11.5'  
WIDTH BETWEEN PROP LINE: 9.8'
- 4) ENTRY NO. 4:  
SECTION F  
HEIGHT OF ENTRY: 3.7'  
WIDTH OF ENTRY: 32'

**NOTE:**  
ASSUME THAT ALL CROSS CUTS IN THE TRACK ENTRY, EXCEPT THOSE EQUIPPED WITH MAN DOORS, ARE GOBBED. THE NEAREST UNGOBBED CROSS CUTS ARE INBY APPROXIMATELY 800'.



**NOTE:**  
AN ALTERNATIVE DESIGN CONCEPT IS BEING CONSIDERED AND MAY ALSO BE SUBMITTED FOR SEAL AREA NO. 51.

**RECEIVED**  
SEP 29 1989

Dept. of Environmental Resources  
McMurray District Office

- LEGEND**
- HYDRAULIC MINE SEAL BULKHEAD
  - PRESSURE GROUTING ALIGNMENT HOLES SPACED 10' OC
  - SURFACE CONTOURS
  - BOTTOM OF COAL CONTOURS
  - NATURAL DRAINAGE PATTERN FLOW
  - GOBBED AREA, ASSUME NO TRAVEL
  - OVERCAST
  - EXISTING MAN DOOR
  - PROPOSED CHECK DAM

APPROVED:	REVISIONS	ISSUED	SEAL AREA NO. 51 SITE PLAN	SCALE 1"=100'
	BIRD NO. 3 MINE BIRD COAL COMPANY SITUATE STONY CREEK TOWNSHIP, CAMBRIA CO., PA CONEMAUGH TWP., SOMERSET CO., PA			SHEET NO. <b>29</b>
JOB 86003	FILE	GWIN, DOBSON & FOREMAN, INC. CONSULTING ENGINEERS ALTOONA - PENNSYLVANIA	DRAWN BY: ARH CHECKED:	