



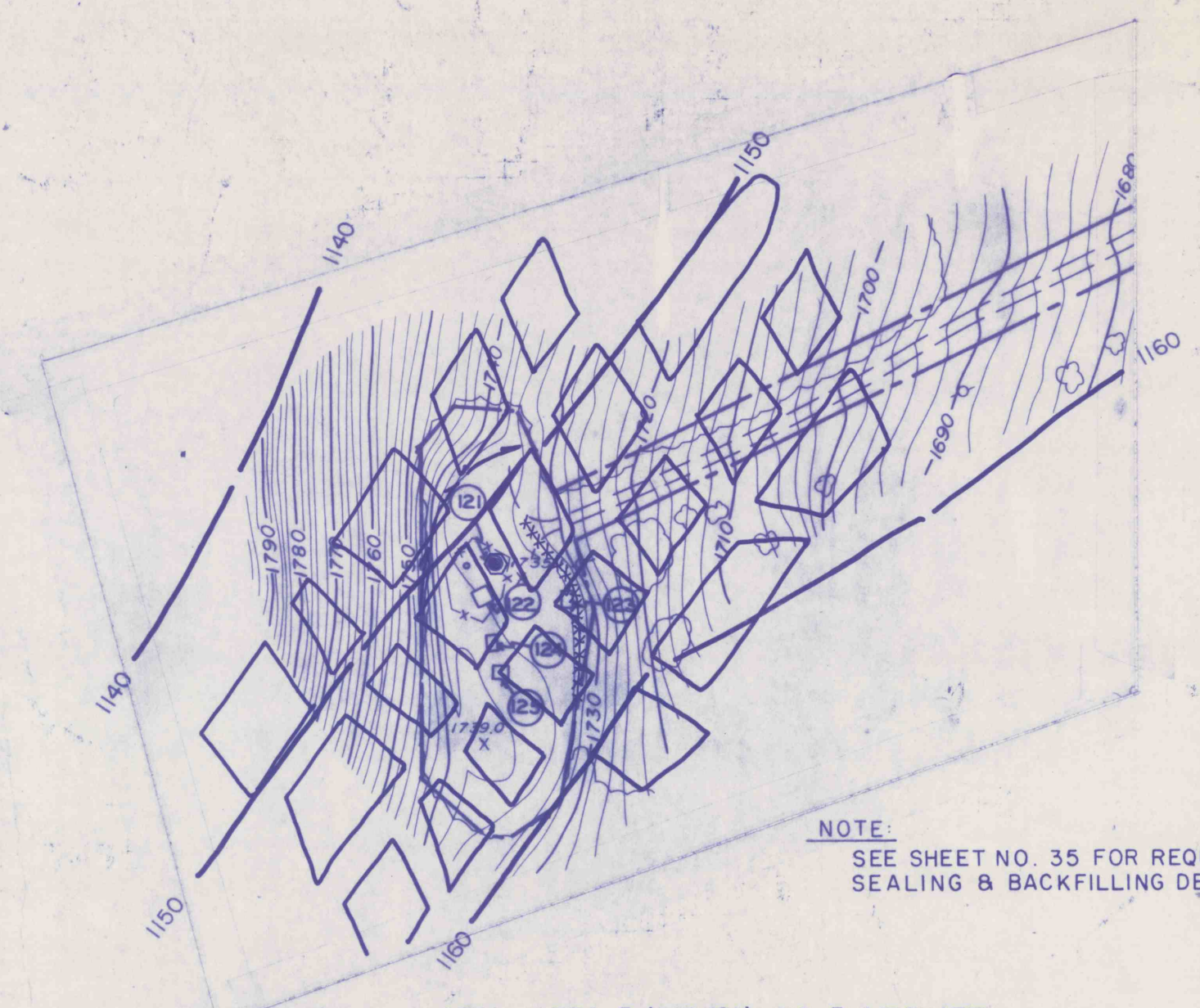
SEDIMENTATION POND NO. 1
FOR POND CROSS-SECTIONS SEE POND CAPACITY CHART.

DOWNGRADIENT WELL TO BE DRILLED TO APPROX. 30'

NOTES:

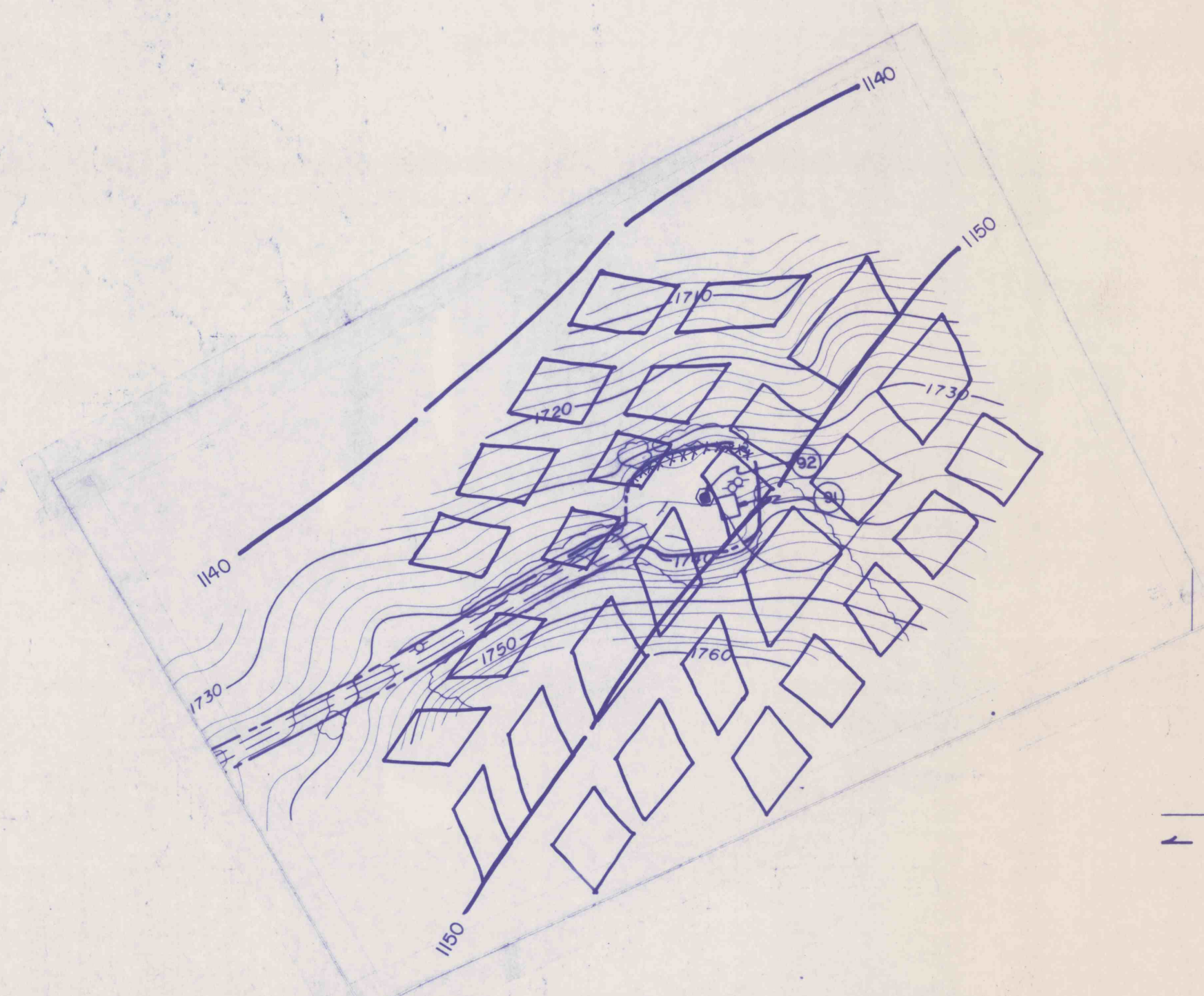
- 1) SEAL AREAS 6, 9 & 16:
SEAL AS PER DETAILS, SHEET NO. 38
- 2) SEAL AREA 7:
SEE SHEET NO. 34 FOR REQUIRED SHAFT SEALING & BACKFILLING DETAILS
- 3) SEAL AREA 8:
SEE SHEET NO. 30 FOR DETAILED EXISTING CONDITIONS & PROPOSED CONSTRUCTION ACTIVITIES.

- SEAL AREA 6 (SID 88) - SLUDGE HOLE
SEAL AREA 7 (SID 126) - NO. 3 EXHAUST SHAFT
SEAL AREA 8 (SID 59) - SLOPE PORTAL
SEAL AREA 9 (SID 87) - FRESH WATER HOLE
SEAL AREA 16 (SID 72) - ROCK DUST HOLE

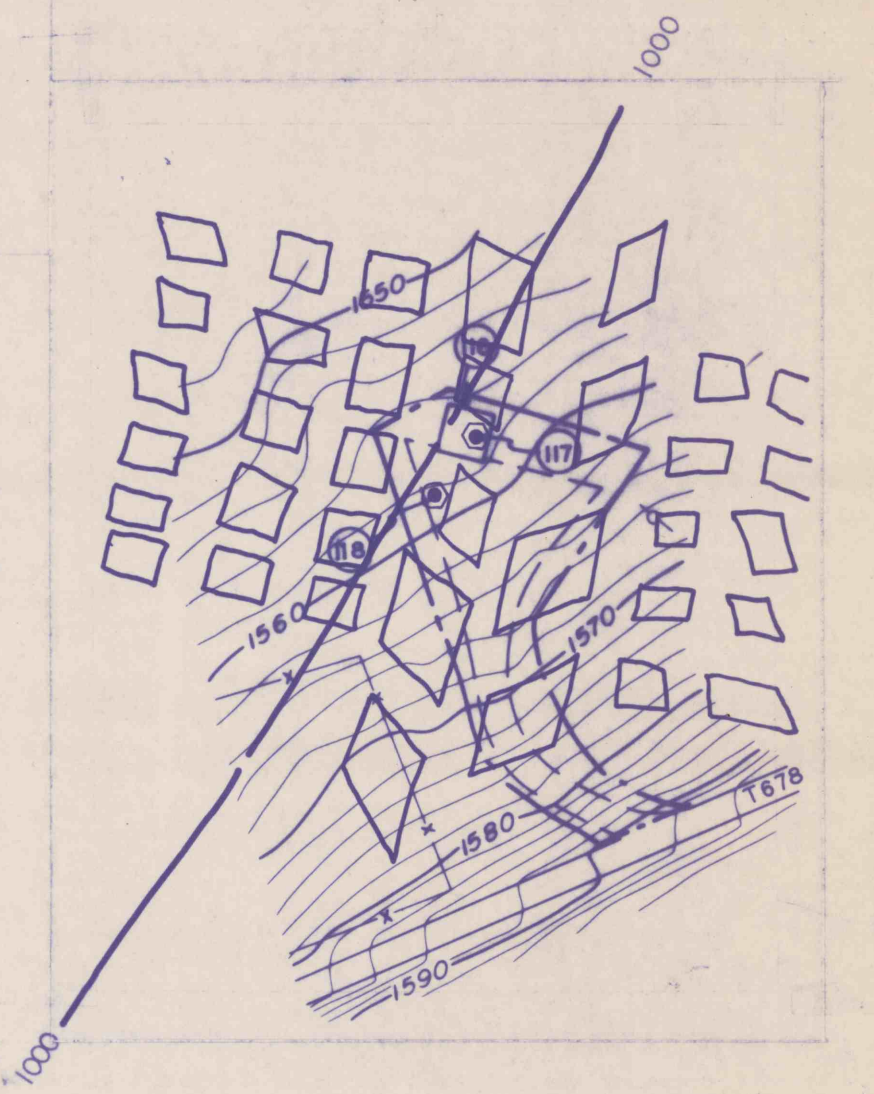


SEAL AREA 3 (SID 121) - NO. 3 AIRSHAFT

NOTE:
SEE SHEET NO. 35 FOR REQUIRED SHAFT SEALING & BACKFILLING DETAILS.



SEAL AREA 5 (SID 92) - NO. 13 POWERHOLE
SEAL AS PER DETAILS, SHEET NO. 38



SEAL AREA 11 (SID 117) - NO. 1 DISCHARGE HOLE
SEAL AREA 12 (SID 118) - NO. 2 DISCHARGE HOLE

NOTE:
THESE BOREHOLES SHALL BE SEALED AS PER DETAILS ON SHEET NO. 36, FOLLOWING THE ESTABLISHMENT OF SUITABLE MINE POOL ELEVATIONAL & WATER QUALITY CONDITIONS.

LEGEND
 --- SOIL EROSION AND SEDIMENTATION CONTROL
 - - - PROPOSED DIVERSION DITCH

RECEIVED
 SEP 29 1989

Dept. of Environmental Resources
 McMurray District Office

REVISIONS	ISSUED	SEAL AREA SITE PLANS	SCALE
		BIRD NO. 3 MINE BIRD COAL COMPANY SITUATE STONY CREEK TOWNSHIP, CAMBRIA CO., PA CONEMAUGH TWP., SOMERSET CO. PA.	1" = 100'
APPROVED:	JOB 86003	GWIN, DOBSON & FOREMAN, INC. CONSULTING ENGINEERS ALTOONA, PENNSYLVANIA	SHEET NO. 28
	FILE	DRAWN BY: BLK CHECKED:	