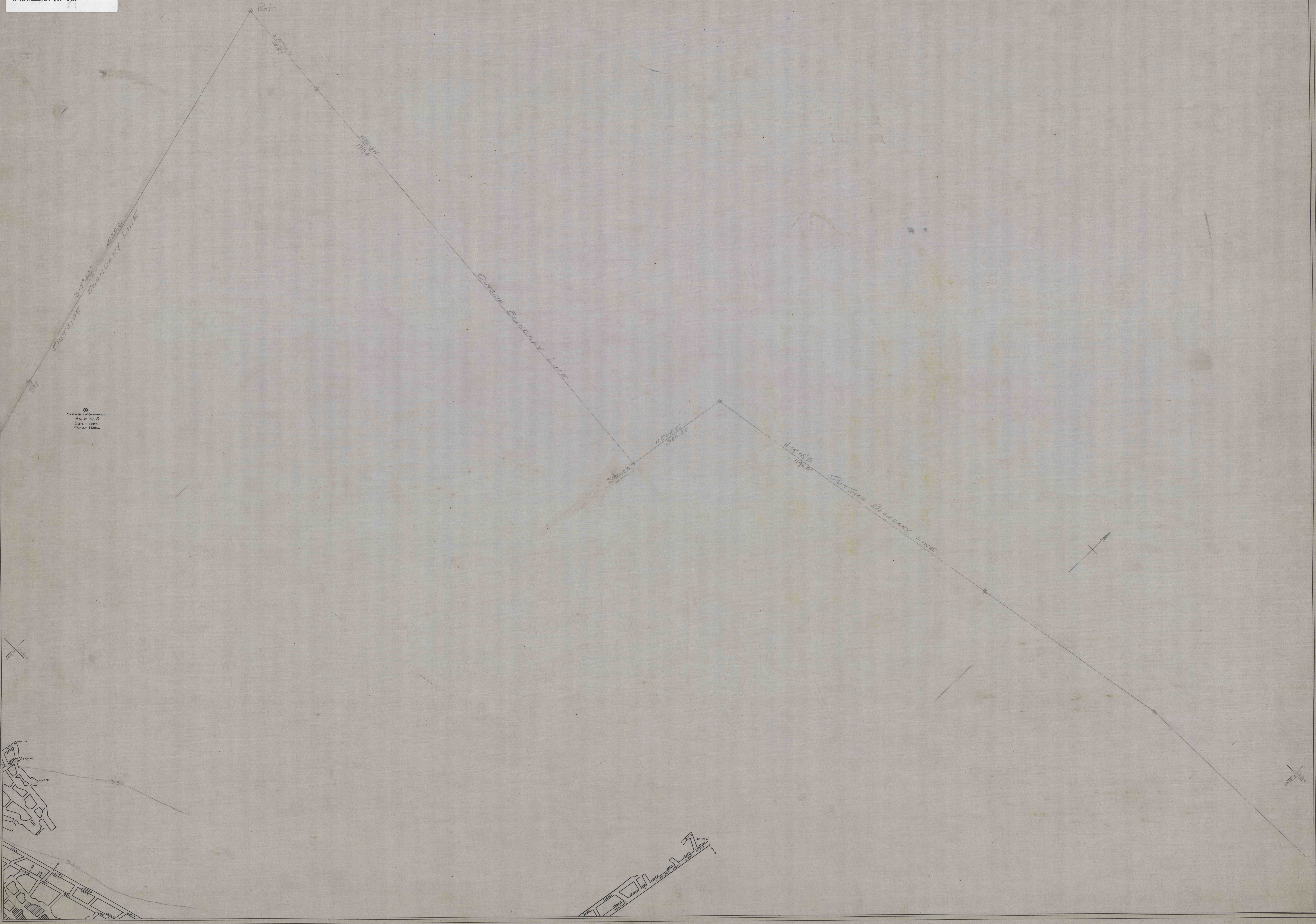
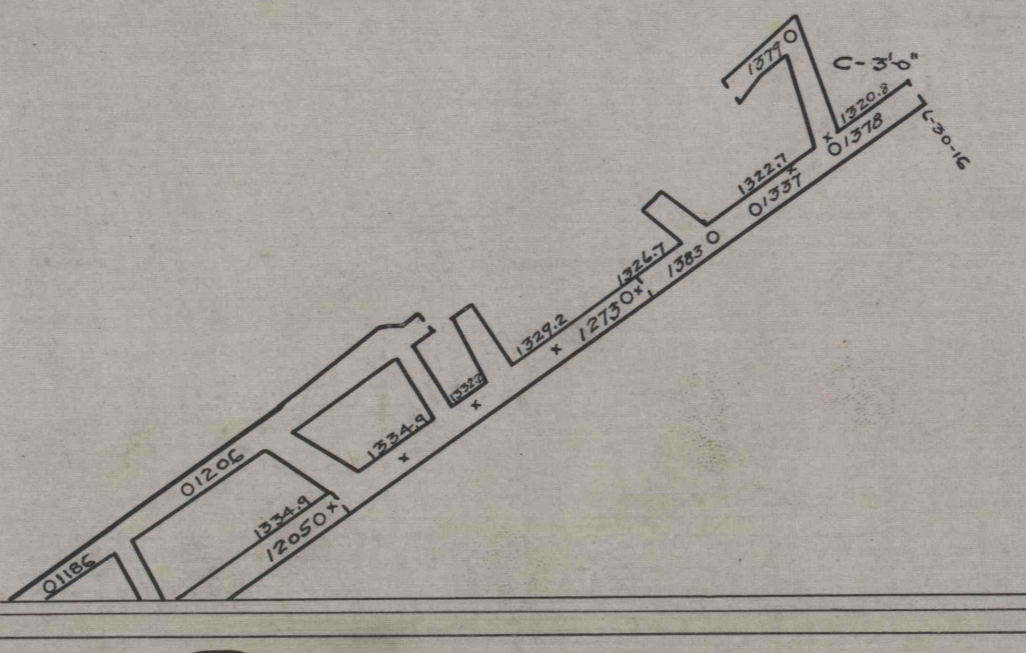
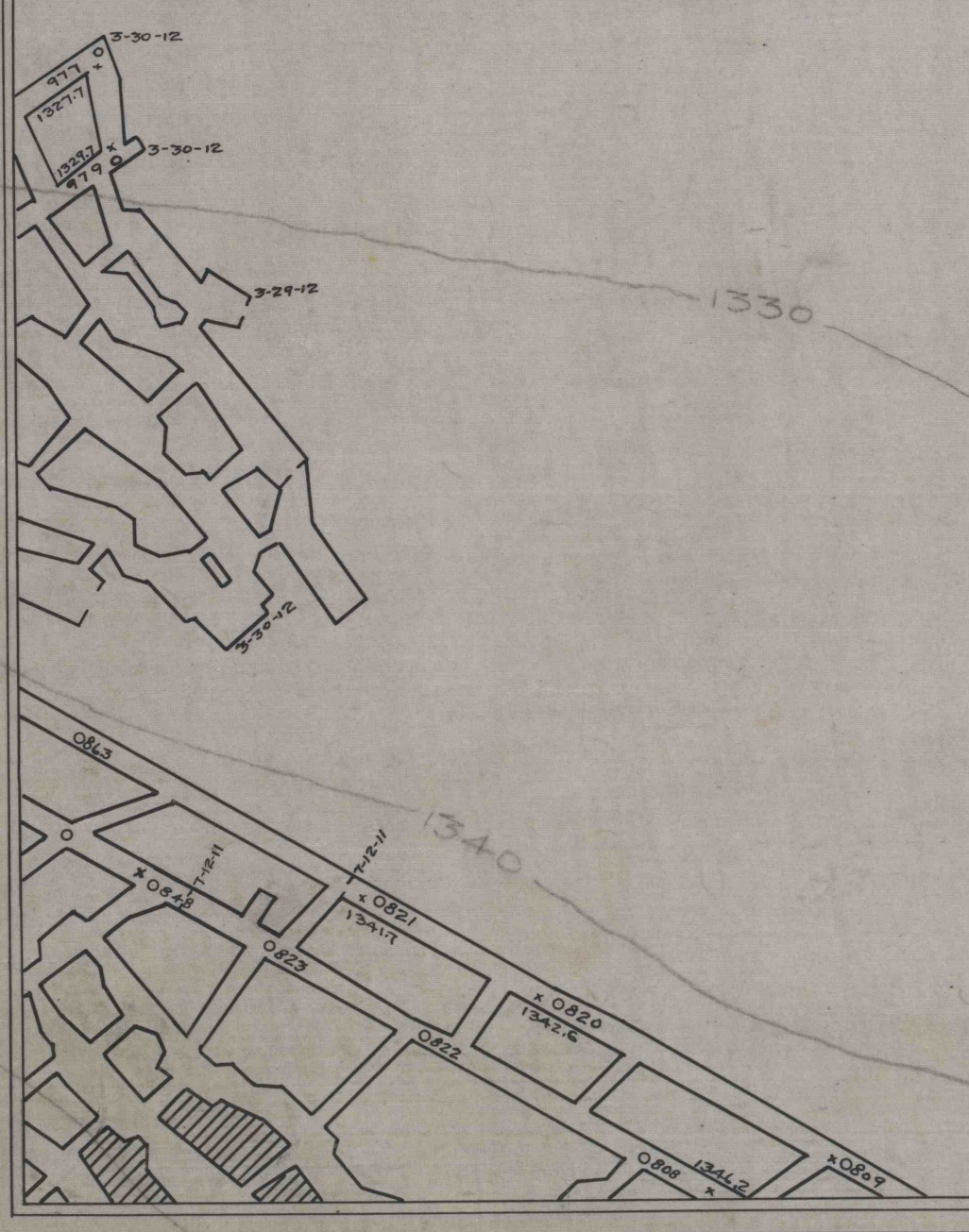


192
DISCLAIMER: This map is provided as a courtesy to the Pennsylvania Bureau of Deep Mine Safety by American Premier Underwriters, Inc. (aka The Penn Central Corporation) and its subsidiary United Railroad Corp., which own or owned, but do not operate, the coal assets depicted herein.
American Premier Underwriters, Inc. and United Railroad Corp. disclaim any representation or duty to any person as to the accuracy or completeness of this map or its fitness for any particular mining, safety or coal related purpose. Any person who uses this map for any reason understands an independent duty to verify its accuracy and completeness, assumes all risks of its use and agrees to hold American Premier Underwriters, Inc., United Railroad Corp. and their respective officers, shareholders, directors, officers and employees harmless from damage or liability arising from its use.



© American Mine Surveyors
Map No. 5
SUR. - 12541
CEN. - 12546



12
F11.11.11

C-63a