

TRACT NO. 786  
LILLIE M. HOWARD  
AREA 7.773 ACS.

TRACT NO. 482  
**HENRY M. FORDYCE**  
AREA 150.543 ACRES

D.D. Hole No. 107-C

D.D. Hole No. 107-B

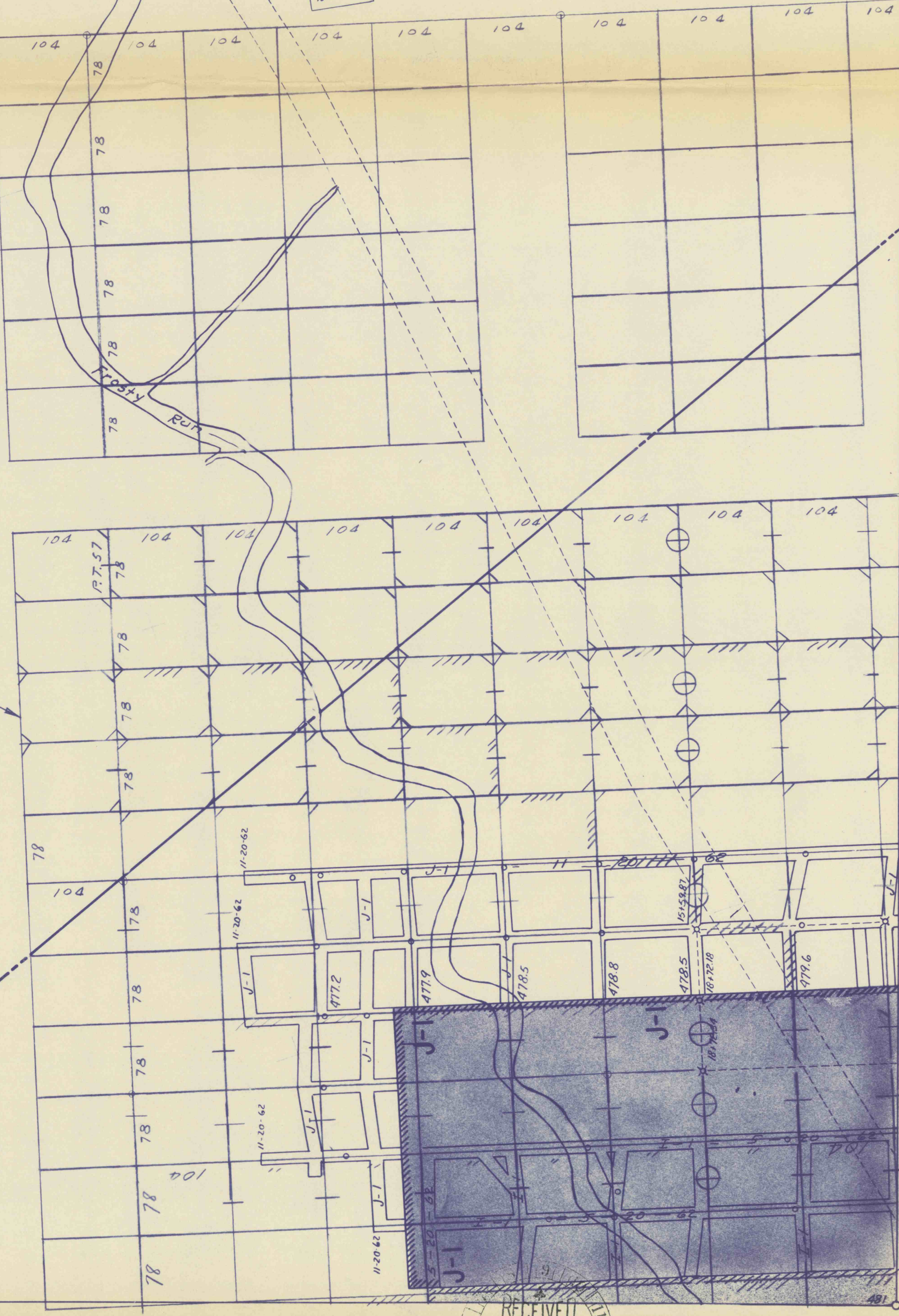
D.D. Hole 106

D.D. Hole No. 88-B

D.D. Hole No. 89-A



TWO BLEEDERS TO BE LEFT  
NEXT TO FAULT



RECEIVED  
APR 18 1963