

**BENSON FORDYCE**  
AREA 68.772 ACS.

**GEORGE W. HEADLEY**  
AREA 133.998 ACS.

**RHODA HEROD ET AL.**  
AREA 119.998 ACS.  
CONVEYED 33.063 ACS.  
REMAINING 86.935 ACS.

**ALLEN STEPHENS**  
AREA 62.005 ACS.  
CONVEYED 38.268 ACS.  
REMAINING 23.637 ACS.

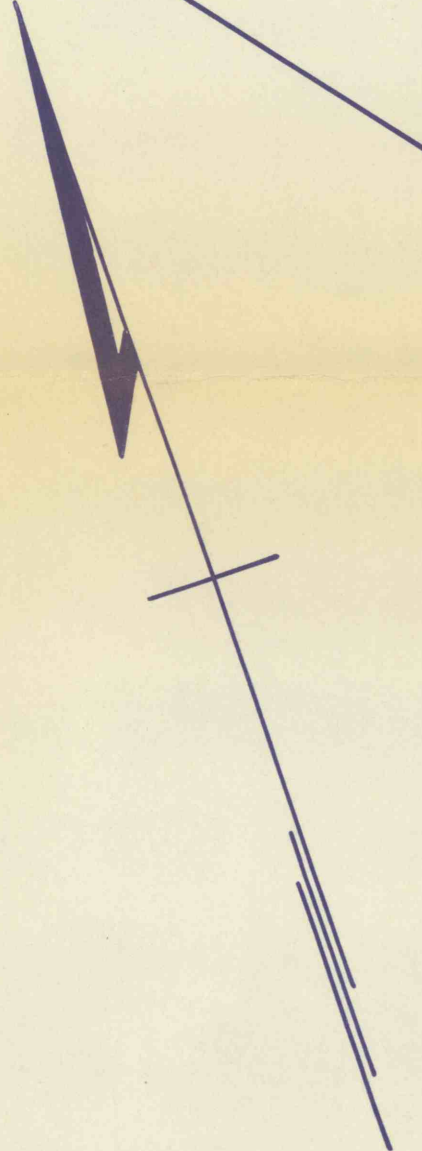
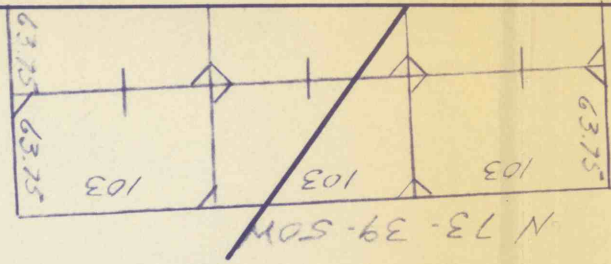
⊙ D.D. Hole No. 42

⊙ D.D. Hole No. 22-A

⊙ D.D. Hole No. 22

⊙ D.D. Hole No. 22-D

⊙ D.D. Hole No. 22-C



573-39-50E



FIT TO 524

FIT TO 522