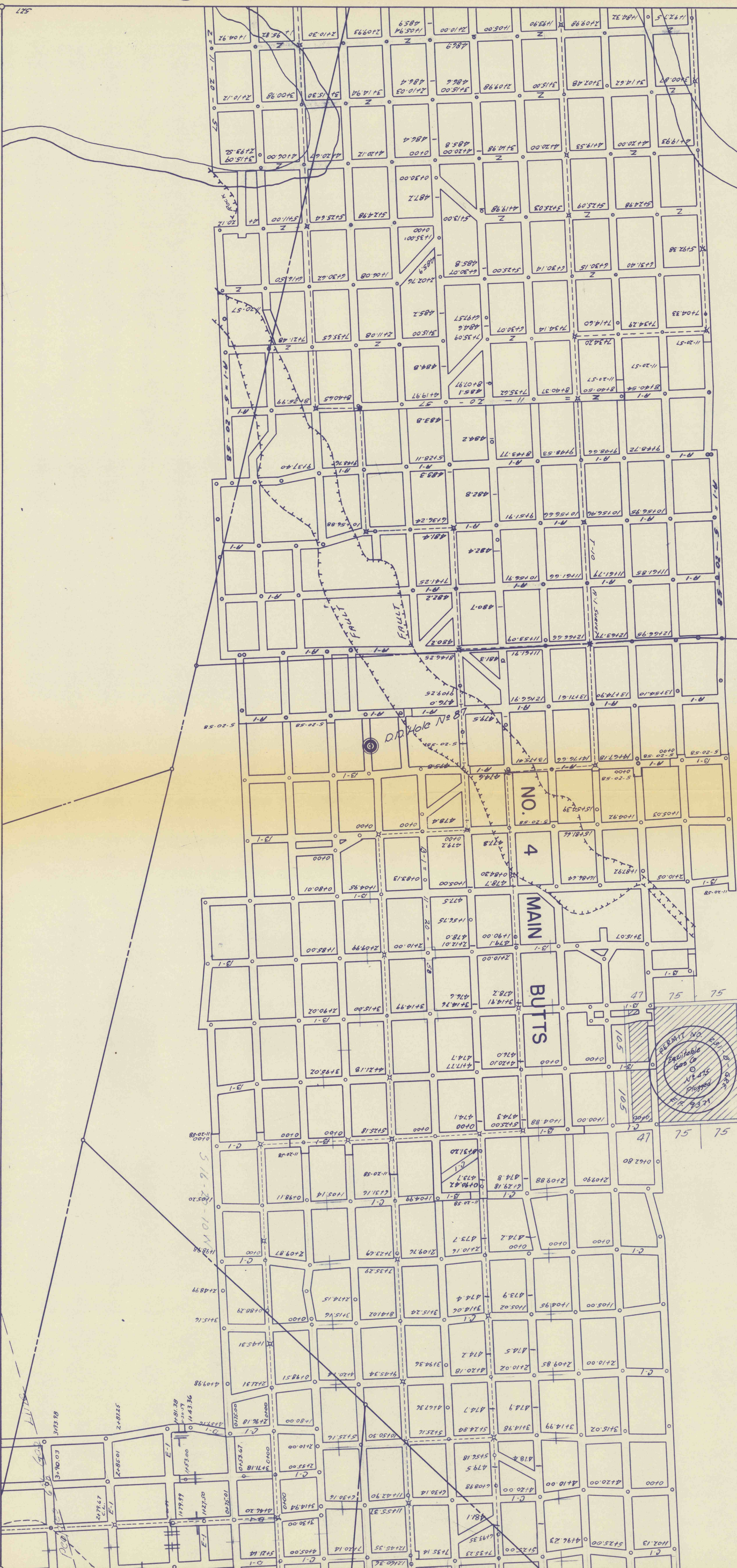


FIT TO 528



COLUMBUS S. MORRIS
 AREA 114.896 ACS.
 LESS 0.019 ACS.
 NET 114.877 ACS.

P.D. Hole No 86

Carriage
 Gas Co.
 N.E. 814
 Plotted
 Plugging Date 6/1/1964

Peoples
 Gas Co.
 Dry Hole
 Plugged

J. B. ROBERTS
 AREA 81.387 ACS.

RECEIVED
 APR 18 1963
 J. B. ROBERTS

FIT TO 526