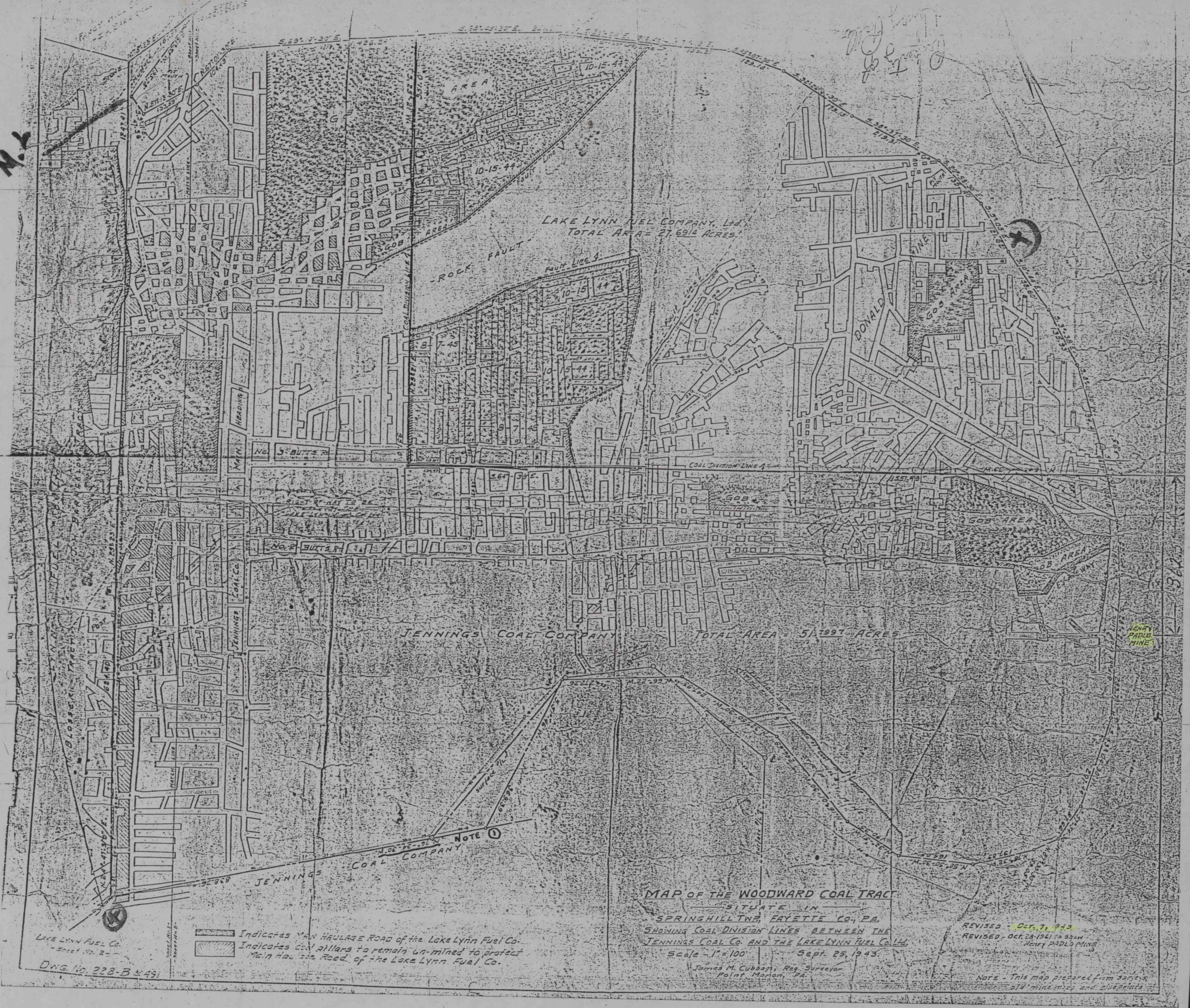


Here

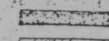
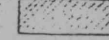
M.L.

Here

Handwritten notes and initials in the top right corner.



LAKE LYNN FUEL CO.
- Sheet No. 2 -
DWS No. 228-B & 491

-  Indicates MAIN HAULAGE ROAD of the Lake Lynn Fuel Co.
-  Indicates COAL PILLARS to remain un-mined to protect Main Haulage Road of the Lake Lynn Fuel Co.

NOTE ①
JENNINGS COAL COMPANY

MAP OF THE WOODWARD COAL TRACT
SITUATE IN
SPRINGHILL TWP, FAYETTE CO., PA.
SHOWING COAL DIVISION LINES BETWEEN THE
JENNINGS COAL CO. AND THE LAKE LYNN FUEL CO. LTD.
Scale - 1" = 100' - Sept. 25, 1943

James M. Cubbassy, Reg. Surveyor
Point Marion, PA.

REVISED - Oct. 7, 1943
REVISED - Oct. 28, 1941 to show
Henry PADLO MINE

NOTE - This map prepared from various
old mine maps and blueprints

Dms # 4994