

CURTIS SCHROCK

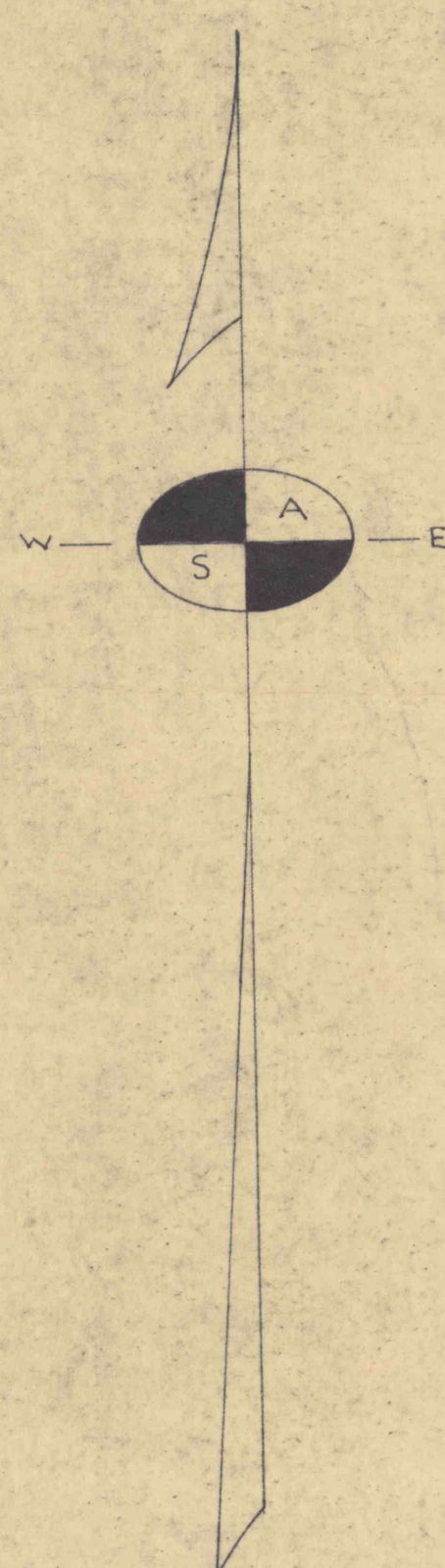
A. KENNEDY & SONS  
COAL CO.

N 11000

N 12000

N 11000

N 10000



CRAFT

MEANS EST.

STEER

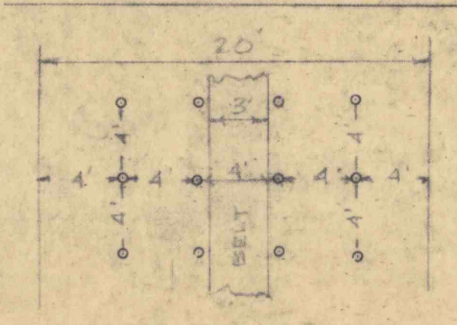
H. REED

REVISION	DATE
A	JUNE 13, 1962
B	JULY 2, 1962
C	SEPTEMBER 5, 1962
D	SEPTEMBER 24, 1962
E	OCTOBER 30, 1962
F	NOVEMBER 21, 1962
G	DECEMBER 26, 1962
H	JANUARY 14, 1963
I	FEBRUARY 11, 1963
J	MARCH 1, 1963
K	MARCH 20, 1963
L	APRIL 10, 1963
M	APRIL 29, 1963

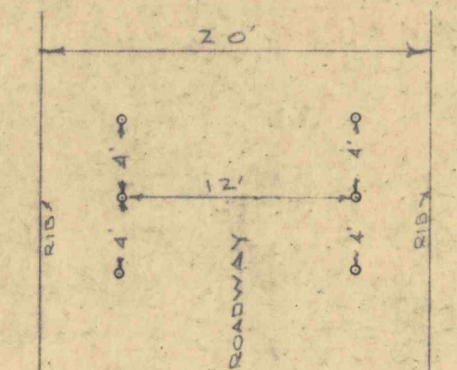
I, Donald J. Sedwick, hereby certify that I am a Registered Surveyor in compliance with the Laws of the Commonwealth of Pennsylvania; that this plat correctly represents the final survey of this coal mine; said survey completed by me on April 29, 1963.

*Donald J. Sedwick*

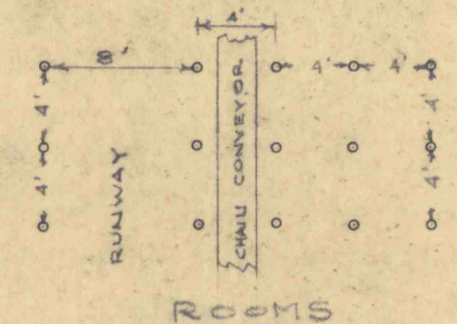
TIMBERING PLAN  
SCALE 1"=10'



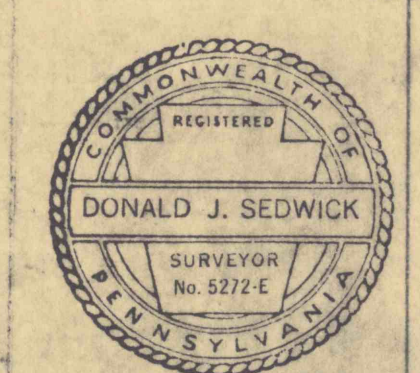
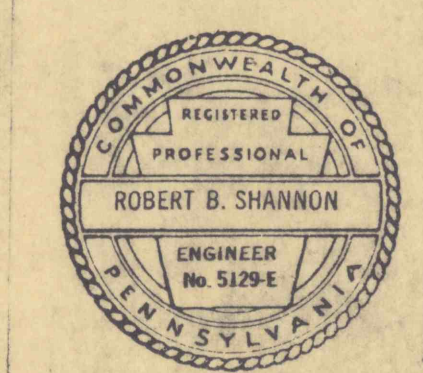
RECT ENTRY



SUPPLY ROAD



ROOMS



REVISED 6/8/62 DJS

**UNITED INDUSTRIES INC.**  
COAL MINE

CURTIS SCHROCK - 92.71 ACRE TRACT

PERDEX TOWNSHIP, JEFFERSON COUNTY, PENNA.

R. B. SHANNON & ASSOCIATES, KITTANNING, PA.

DRAWN BY D.J.S. DATE JUNE 4, 1962

SCALE 1" = 100' DRAWING NO. P-136