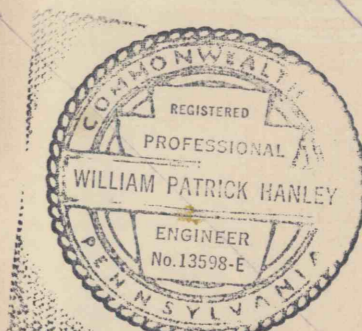


WEST VIRGINIA  
PENNSYLVANIA

**MINE MAP LEGEND:**

- Mine Property Outline
- Conveyor Belt
- Mine Track
- Feeder Cable or Trolley Line
- Intake Air Escapeway
- Alternate Escapeway
- Intake Air
- ← Return Air
- | Permanent Air Stoppings
- | Permanent Air Stoppings With Door
- | Mine Air Regulator
- | Mine Air Overcast
- | Temporary Air Check
- Fire Retardant Line Curtain
- 3 Engineer Surveying Stations
- o Bottom Sewickley Coal Elevation Contours
- o Mining Height
- o Door
- o Bleeder Evaluation Point
- o CO Monitoring Point
- o Belt Transfer Point

There are two production sections in the mine.  
All permanent air stoppings, overcasts and man-doors made non-combustible material.  
All temporary air checks and line curtains are made of fire ardent materials.  
The Pittsburgh Seam 120 feet below has been partially mined the Shannopin Mine.



William P. Hawley

SHEET No. 8

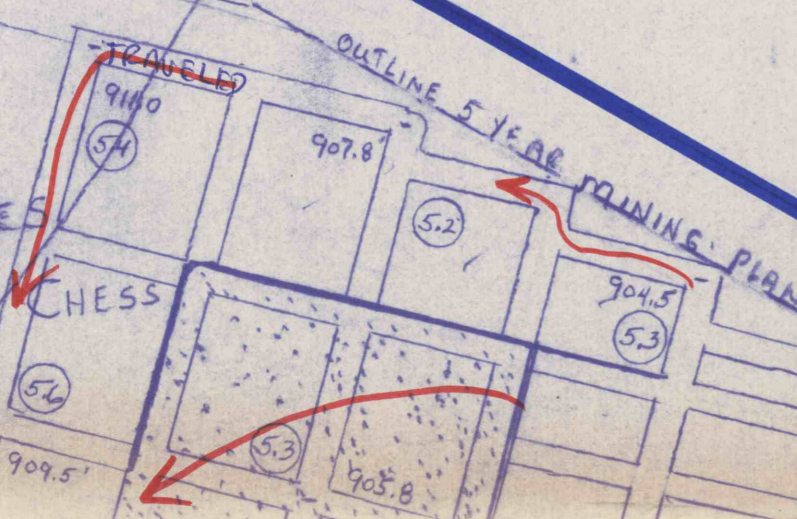
DUNKARD MINING CO  
DUNKARD MINE No 2 - I.D. 3601301  
DUNKARD TWP., GREENE CO., PA  
SCALE: 1"=100' SEWICKLEY SEAM

**NOTE:**

SUBTRACT 50 FEET FROM THE SEWICKLEY COAL ELEVATIONS SHOWN IN DUNKARD AND FRANCIS MINES TO GET SEWICKLEY COAL ELEVATIONS ABOVE SEA LEVEL.

SUR: GARRETT PHILLIPS  
SEW: CONSOL COAL CO

SUR: WILMA R. PYLES  
SEW COAL: RAYMOND CHESS



HILMARET MINE  
SHANNOPIN MINE

PITTSBURGH S.B. SEAM