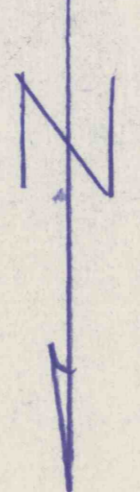


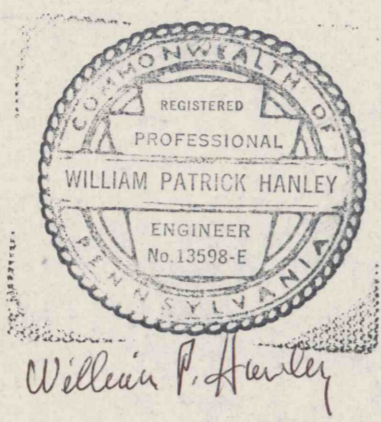
N 25,000 E 31,000 N 27,000 E 33,000 N 29,000 E 35,000

SHEET No. 2

DUNKARD MINING CO
DUNKARD No. 2 MINE I.D. 36 01301
DUNKARD TOWNSHIP - GREENE CO., PA.
SCALE: 1" = 100' SEWICKLEY SEAM



NOTE:
SUBTRACT 50 FEET FROM THE SEWICKLEY COAL ELEVATIONS SHOWN IN DUNKARD AND FRANCIS MINES TO GET SEWICKLEY COAL ELEVATIONS ABOVE SEA LEVEL.



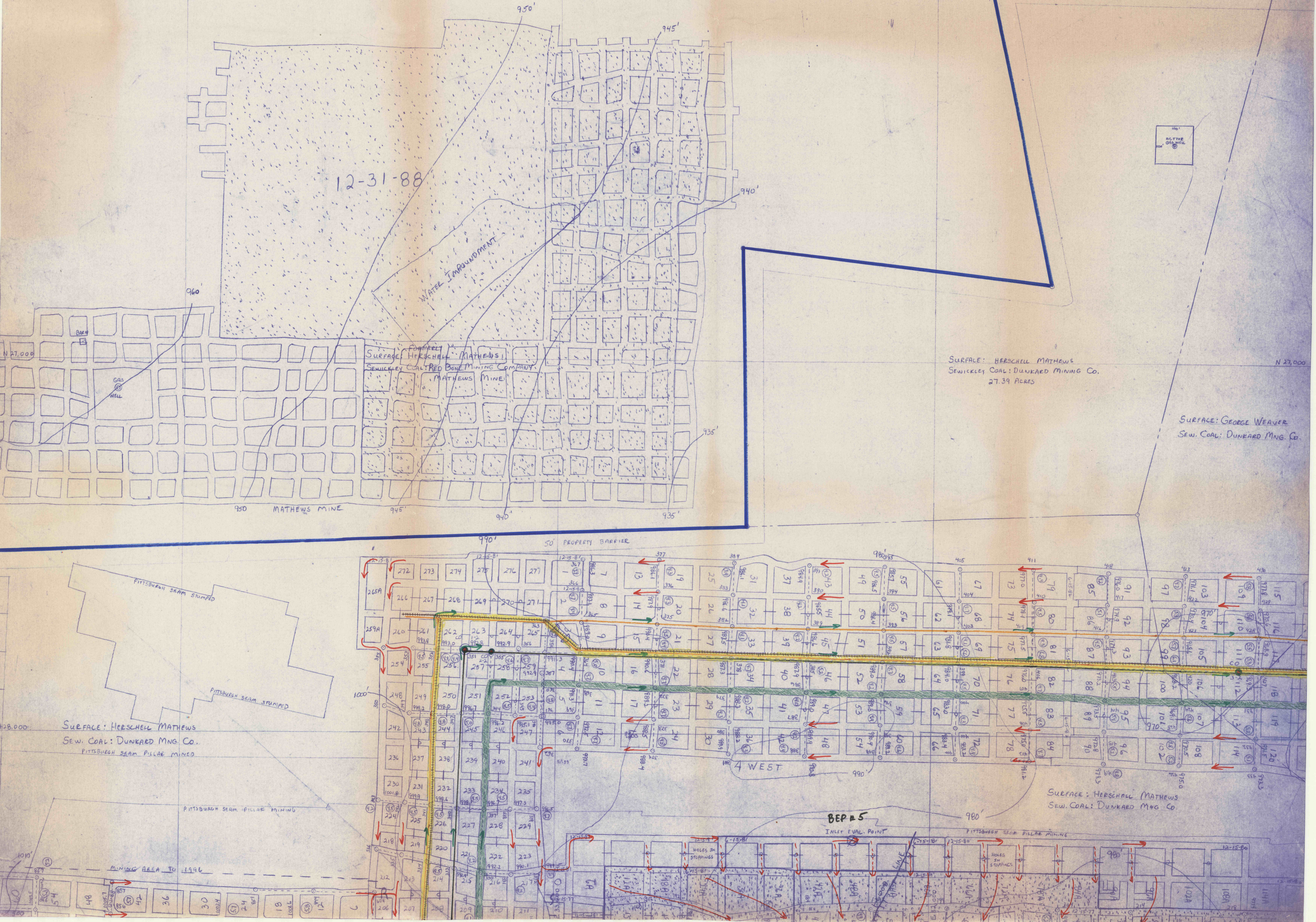
MINE MAP LEGEND:

- Mine Property Outline
- Conveyor Belt
- Mine Track
- Feeder Cable or Trolley Line
- Intake Air Escapeway
- Alternate Escapeway
- Intake Air
- Return Air
- Permanent Air Stoppings
- Permanent Air Stoppings With Door
- Mine Air Regulator
- Mine Air Overcast
- Temporary Air Check
- Fire Retardant Line Curtain
- Engineer Surveying Stations
- Bottom Sewickley Coal Elevation Contours
- Mining Height
- Door
- Bleeder Evaluation Point
- CO Monitoring Point
- Belt Transfer Point

1. There are two production sections in the mine.
2. All permanent air stoppings, overcasts and man-doors made of non-combustible material.
3. All temporary air checks and line curtains are made of fire retardant materials.
4. The Pittsburgh Seam 120 feet below has been partially mined by the Shannopin Mine.

SURFACE: VARIOUS W. VA. TRACTS
SEWICKLEY COAL: T. JOHNSON

WEST VIRGINIA
PENNSYLVANIA



SURFACE: HERSCHELL MATHEWS
SEWICKLEY COAL: DUNKARD MINING CO.
27.39 ACRES

SURFACE: GEORGE WEAVER
SEW. COAL: DUNKARD MNG. CO.

SURFACE: HERSCHELL MATHEWS
SEW. COAL: DUNKARD MNG. CO.
PITTSBURGH SEAM PILLAR MINED

SURFACE: HERSCHELL MATHEWS
SEW. COAL: DUNKARD MNG. CO.

MINING AREA TO 1596