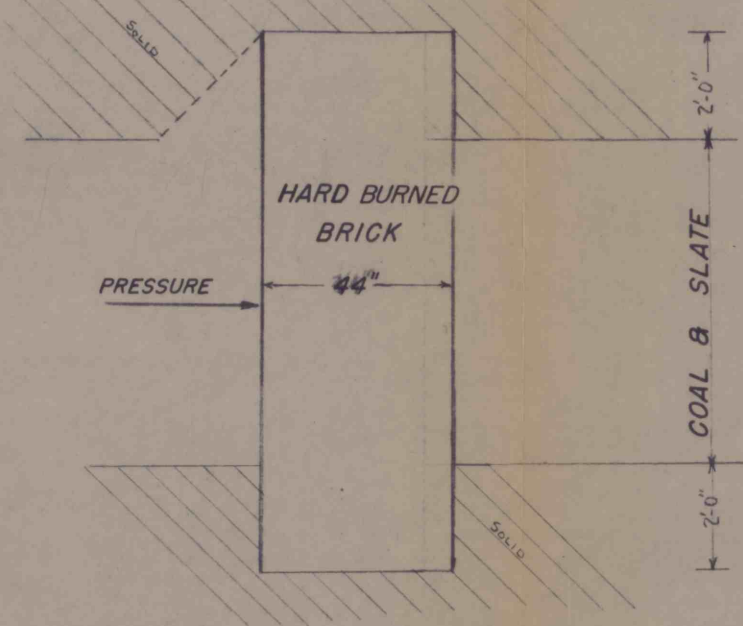
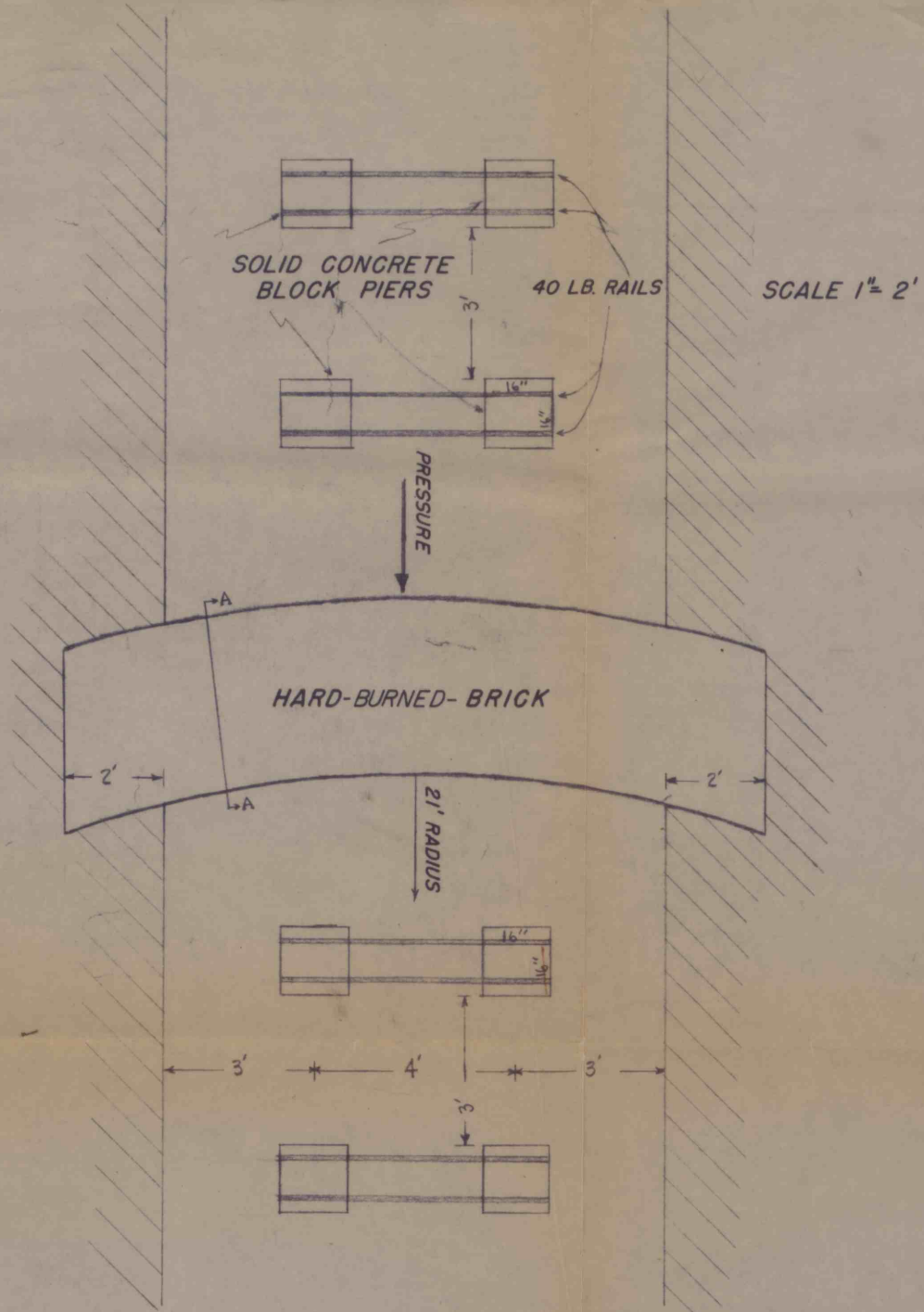


FORMULA FOR DAM THICKNESS
 $T = \frac{PW\sqrt{4R-1}}{4S}$

T=THICKNESS OF DAM IN INCHES
 R=SHORTER RADIUS IN INCHES
 W=WIDTH OF OPENING IN INCHES
 S=COMPRESSIVE STRENGTH OF BRICK IN LBS. PER SQ. IN. USED 1000 LBS. PER. SQ. IN.

LOCATION OF DAMS



SECTION A A

PITTSBURGH COAL CO.
 MONTOUR 10 MINE

PROPOSED BULKHEADS IN 16,17,18,19 FACES.

MAY 1952

SCALE AS NOTED