

SPECIFICATIONS AND REQUIREMENTS

- a. The channels to be made as follows;  
Rib channels to be excavated in solid coal a minimum depth of two feet.  
Roof channels to be excavated into solid rock the full width of the dam not less than 18" inches deep.  
Bottom channel is to be excavated into the solid rock the full width of the dam, not less than 18 inches deep.
- b. All channels are to be made without blasting.
- c. The channel to be inspected by at least one member of the Commission before the dam is built.
- d. Standard grade "A" 8"x8"x16" solid concrete blocks shall be used in the construction of the dam.  
Compression strength test over 2,500 pounds per square inch.
- e. The concrete mixture shall consist of: 1 part Portland cement, 2 parts clean sand, 4 parts clean gravel and sufficient water free of acid, oil, etc.
- f. Mortar mix: 1 part portland cement, 3 parts river sand and acid-free water.
- g. Minimum 4" footer to be laid in bottom channel.
- h. The minimum thickness of dam to be 22", consisting of two widths of the above mentioned blocks laid six inches apart, and the resulting space to be filled with reinforced concrete.
- i. A gate valve shall be connected to the pipe entering the dam.
- j. No water shall be impounded back of dam until after the seventh day of its completion.
- k. Minimum thickness of dam to be 22 inches all the way from the top to bottom and rib to rib. This includes inside the channeling.
- l. The dam to be sealed the full thickness of dam at the top.
- m. The barrier pillar of at least 100 feet shall be maintained around the sump as long as the sump is in use.
- n. That a member of the Commission inspect the completed dam before it is used.

State of Pennsylvania )  
County of Indiana )

On this 29th day of November 1955, before me the undersigned official, personally appeared, W.D. Amstutz - E. S. Ernest who acknowledged that the concrete dams hereon detailed, were constructed under his supervision according to the specifications shown hereon.

W.D. Amstutz

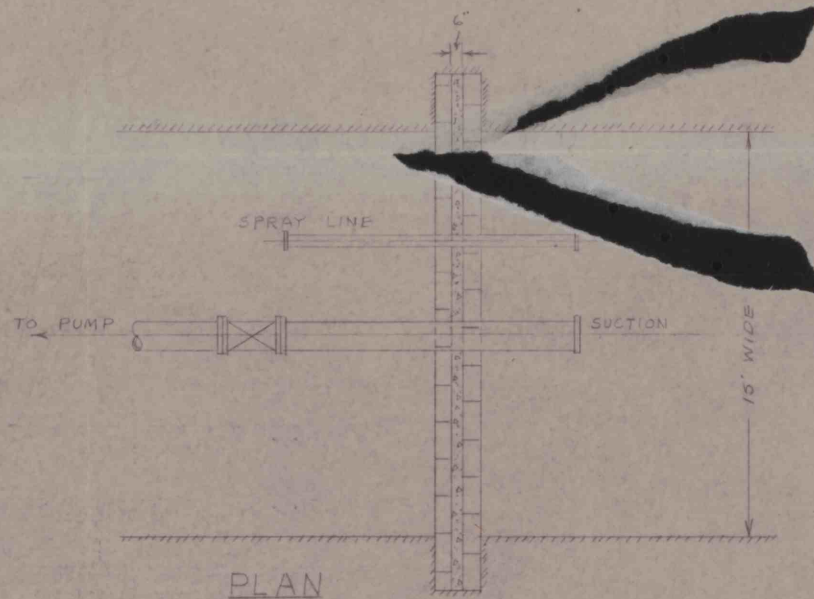
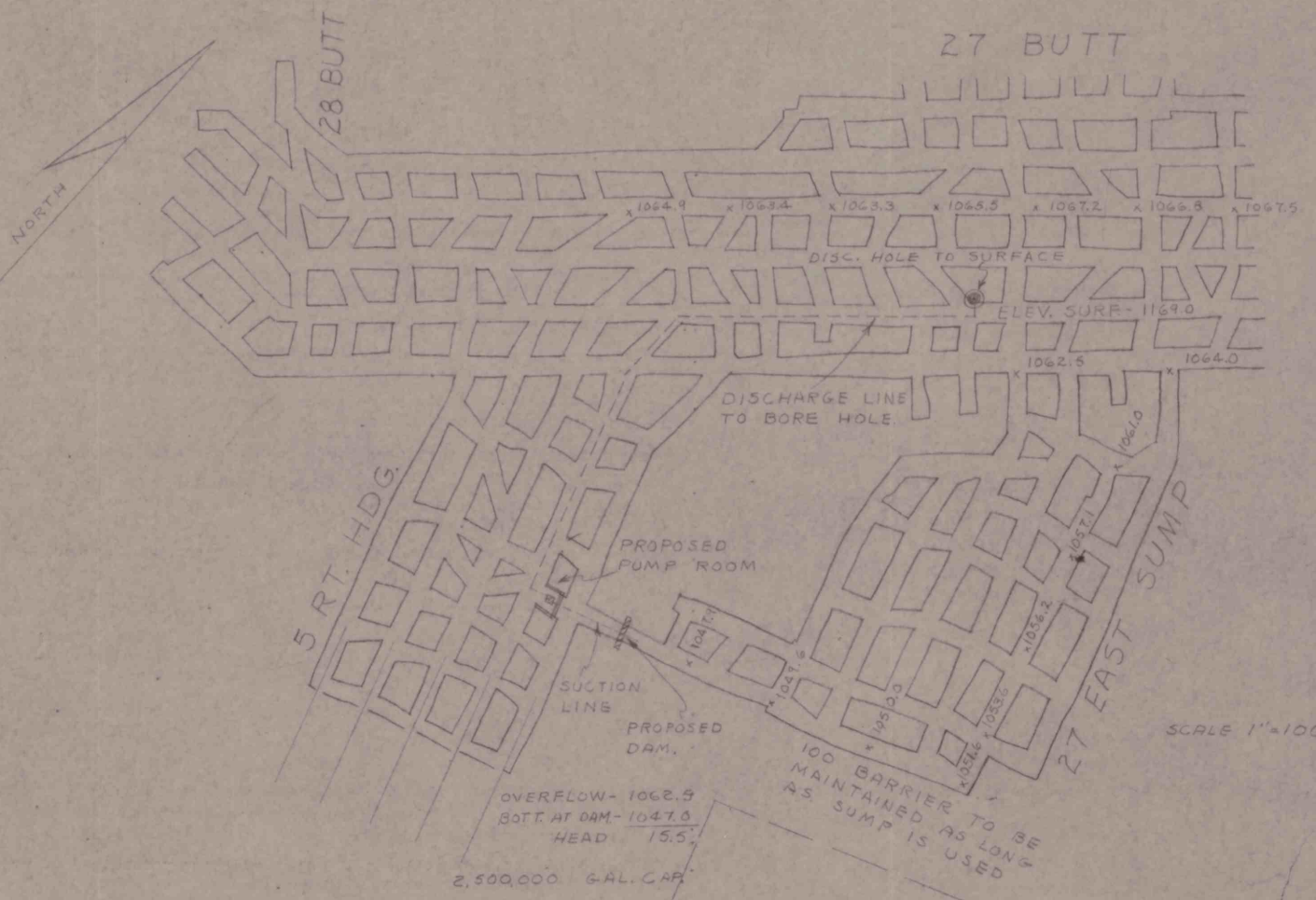
Notary Public

Approved:

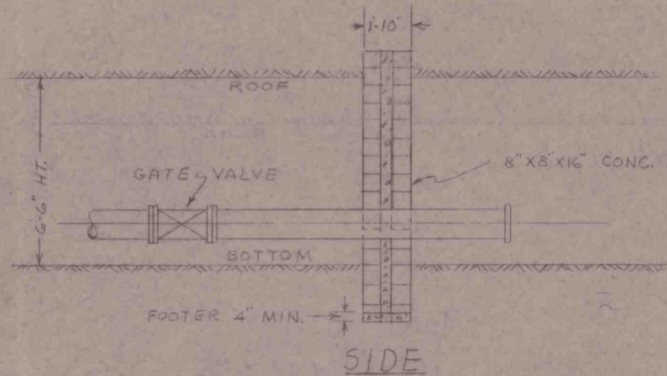
E.S. Ernest  
E.S. Ernest, Inspector  
30th Bituminous District

W.D. Amstutz  
W.D. Amstutz, Inspector  
25th Bituminous District

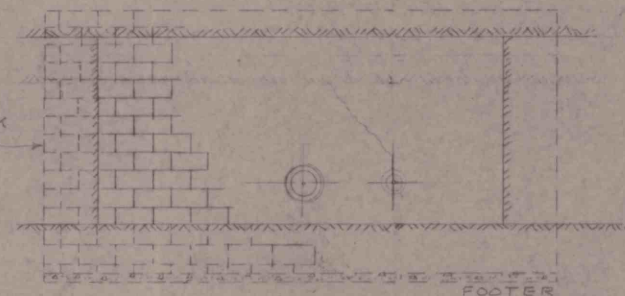
Lawrence Jones  
Lawrence Jones, Inspector  
10th Bituminous District



DETAILS OF DAM CONSTRUCTION  
1/4" = 1 FOOT



SIDE



REAR

ROCHESTER & PITTSBURGH COAL CO.	
ENGINEERING DEPT., INDIANA, PA.	
PLAN OF PROPOSED INSTALLATION OF DAM AT 27 EAST-5 RT. ERNEST #3	
MADE BY E.S.	SCALE 1/4" = 100'
TRAINED BY E.S.	DATE 7-6-55
CHECKED BY	NO