



Commonwealth of Pennsylvania  
County of Cambria

On this 6<sup>th</sup> day of December 1950, before me the undersigned officer personally appeared *Paul G. Sherff* who acknowledged that the same herein detailed were constructed by him, or under his supervision, according to the specifications shown.

*Paul G. Sherff*  
NOTARY PUBLIC  
Cambria County, Pa.  
Exp. 12/31/55

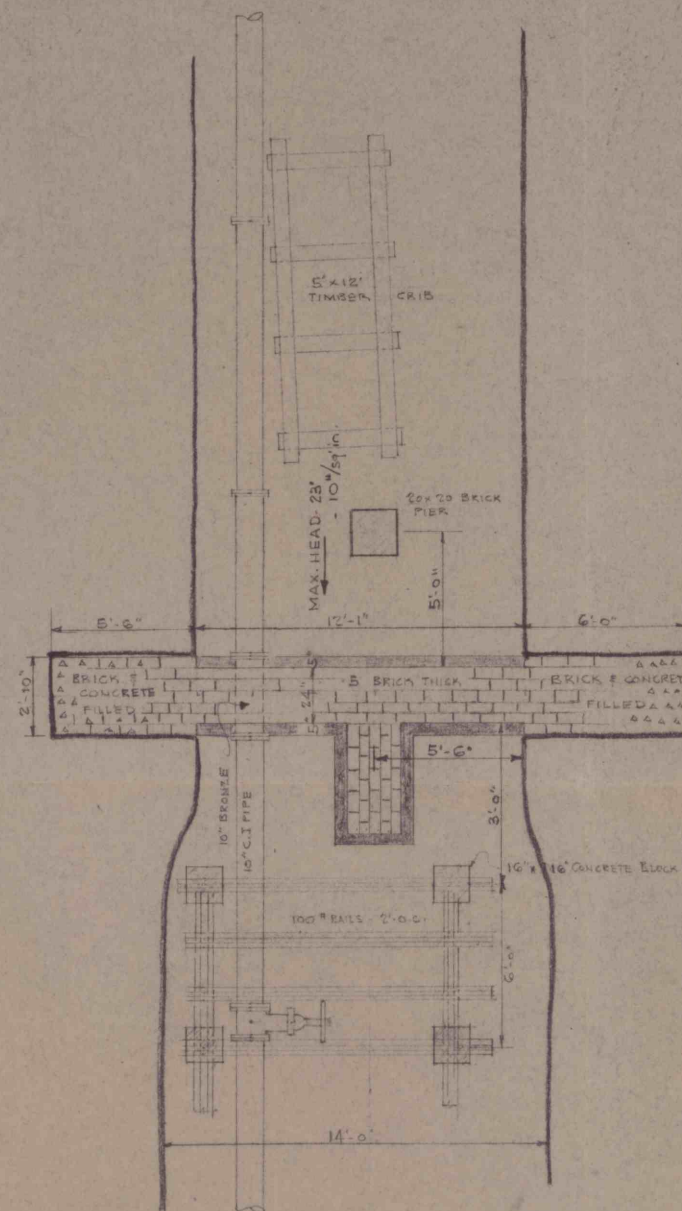
This is to certify that this print, DRAWING No. 3, is a correct copy of the plans for DAMS "A" and "C" constructed in PORTAGE No. 2 MINE, JOHNSTOWN COAL AND COKE COMPANY.

*Ben R. Oued*  
MINING ENGINEER

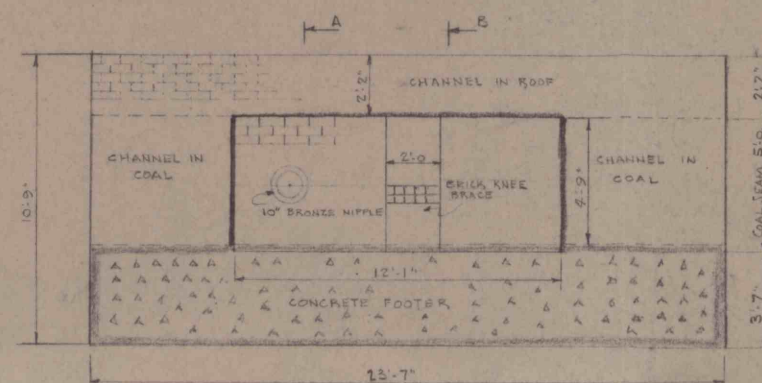
*W.R. Cunningham*  
W.R. CUNNINGHAM, INSPECTOR  
7<sup>th</sup> BITUMINOUS DISTRICT

APPROVED: - - - *Charles E. Fisher*  
CHARLES E. FISHER, INSPECTOR  
10<sup>th</sup> BITUMINOUS DISTRICT

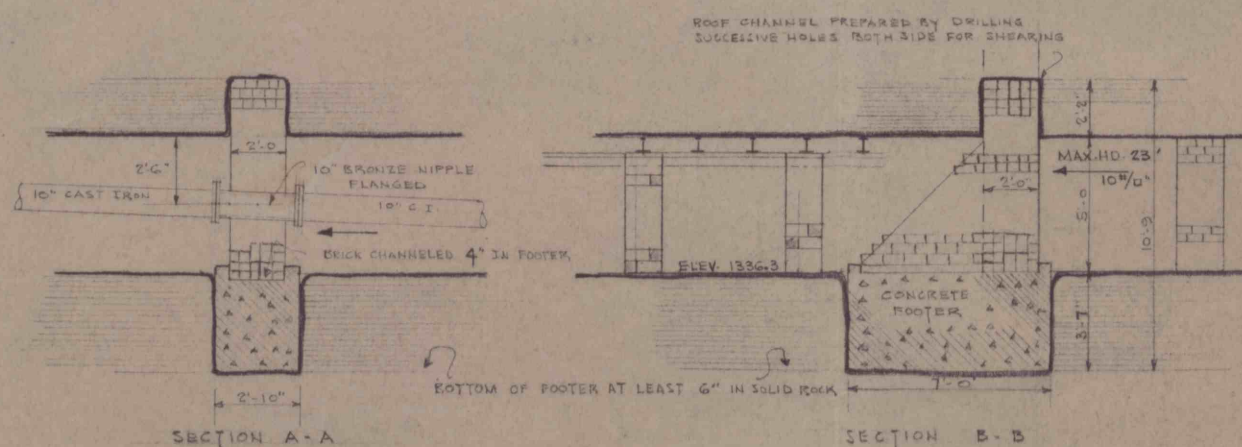
*Thomas E. Jones*  
THOMAS E. JONES, INSPECTOR  
6<sup>th</sup> BITUMINOUS DISTRICT



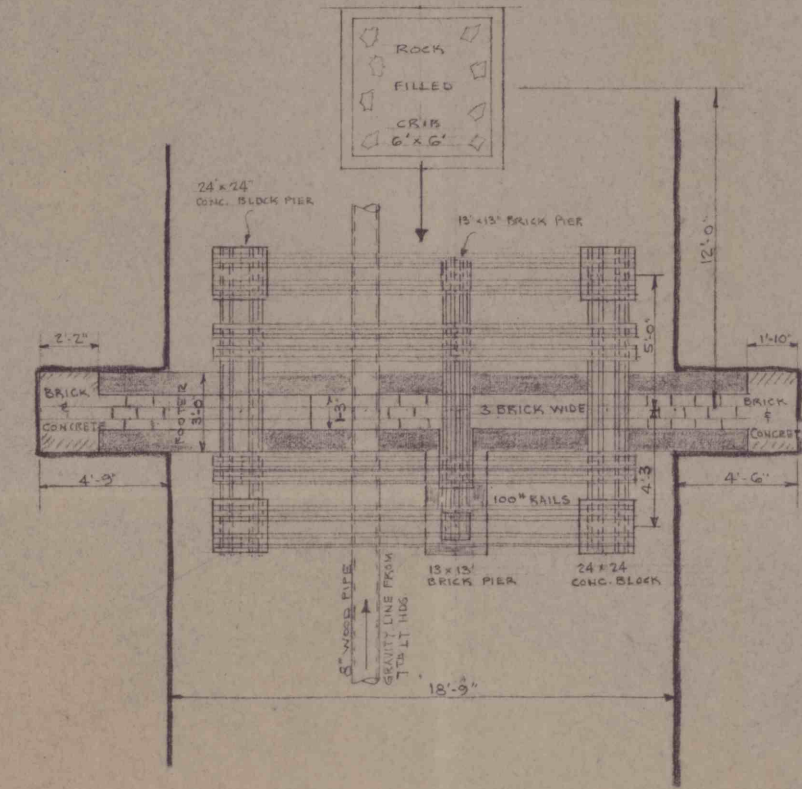
PLAN VIEW



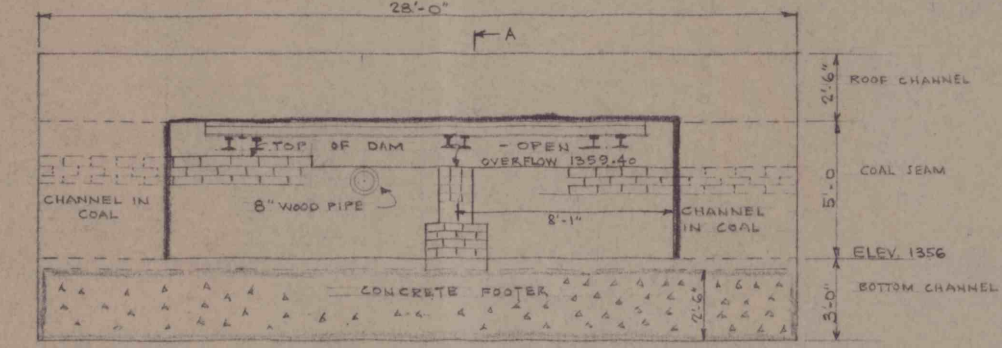
FRONT ELEVATION



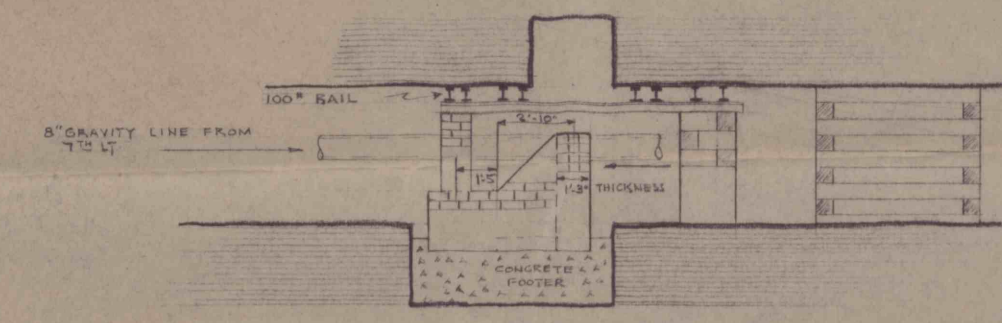
SECTIONS OF DAM "C" - SEE PLAN ② DEC. 1948



PLAN VIEW



FRONT ELEVATION



SECTION A-A

SECTIONS OF DAM "A" - SEE PLAN ① REVISED DEC. 1948

**- SPECIFICATIONS -**  
FOOTERS: TO EXTEND 6" INTO SOLID ROCK - MAKE 4" CHANNEL IN FOOTER FOR TONGUE & GROOVE JOINT WITH BRICK.  
CONCRETE: 1 PART CEMENT - 2 PARTS SAND - 4 PARTS GRAVEL  
BRICK: 3 1/2 x 4 1/2 x 8" - AVERAGE ULT. STRENGTH - 8000#/sq.  
MORTAR: 1 PART CEMENT - 2 1/2 PARTS CLEAN RIVER SAND  
FACTOR OF SAFETY: AT LEAST - 8 - KNEE BRACE NOT INCLUDED IN CALCULATED STRENGTH  
DAM A: NOT TO BE SEALED - PROVIDE OVERFLOW NEAR ROOF

JOHNSTOWN COAL & COKE CO  
PORTAGE No. 2 MINE  
SUMP AND DAMS  
NEAR 6<sup>th</sup> RT HDG - MAIN DIP  
SCALE 1/4" = 1'-0"

Andrew B. Crichton  
Mining Engineer  
Johnstown, Pa.