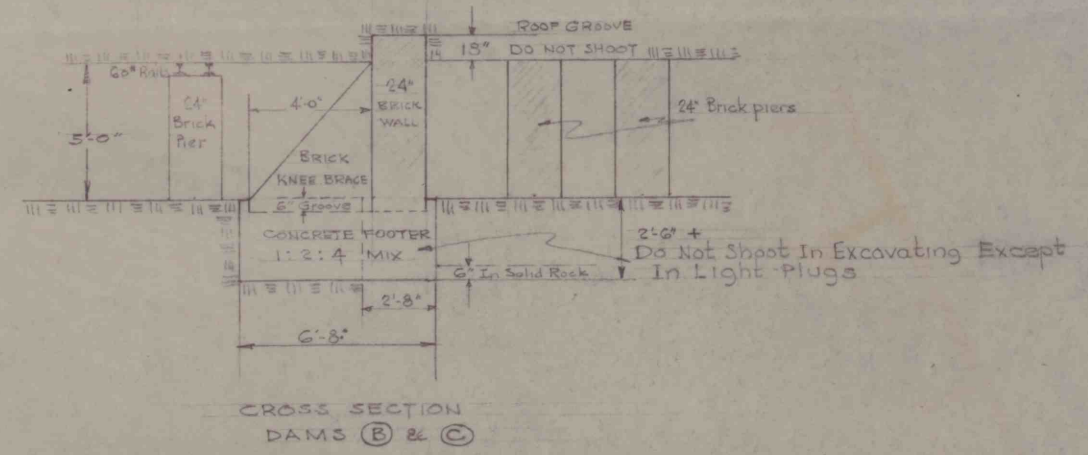
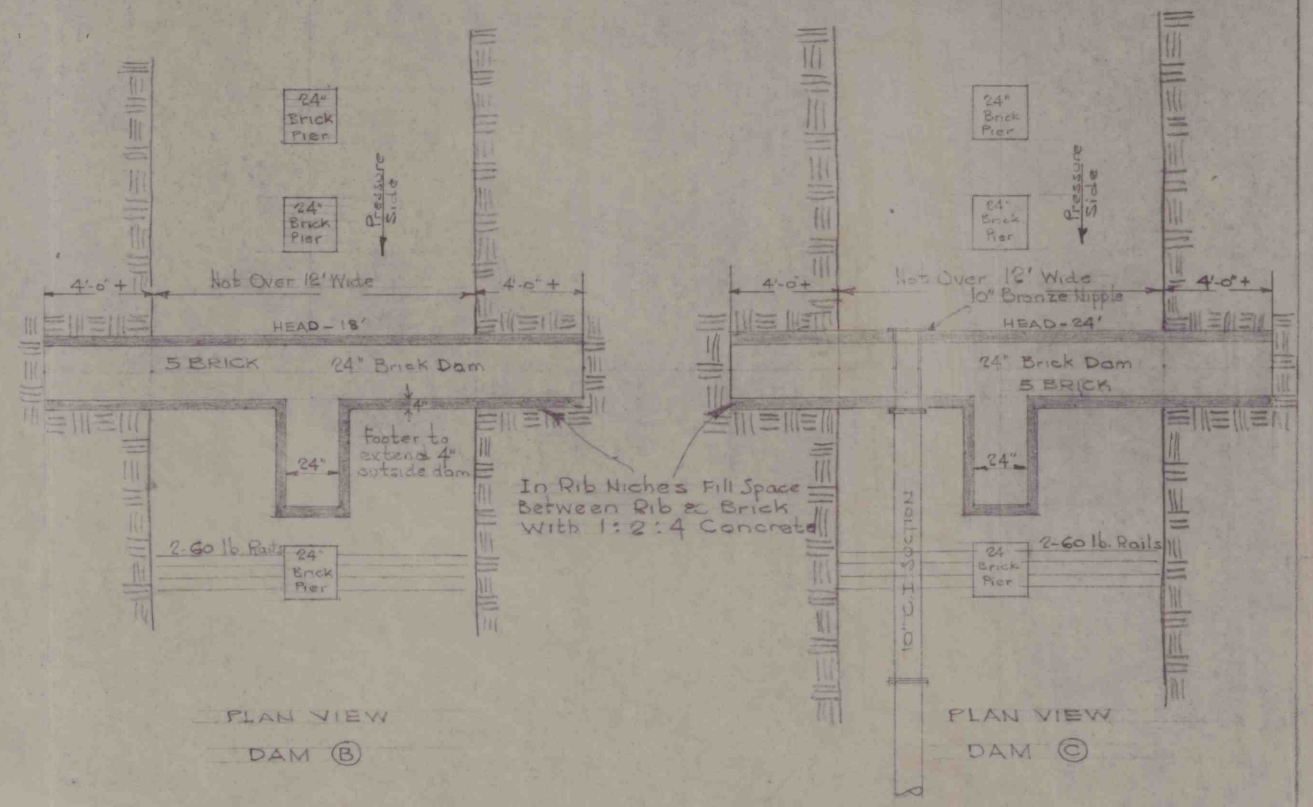




SCALE 1"=100'



JOHNSTOWN COAL & COKE CO.
 PORTAGE No 2 MINE
 PROPOSED SUMP AND DAMS
 NEAR 6TH RIGHT HEADING
 SCALES 1/4"=1'-0" DECEMBER-1948

Andrew B. Crichton
 Mining Engineer
 Johnstown, Pa.

Preliminary Plan