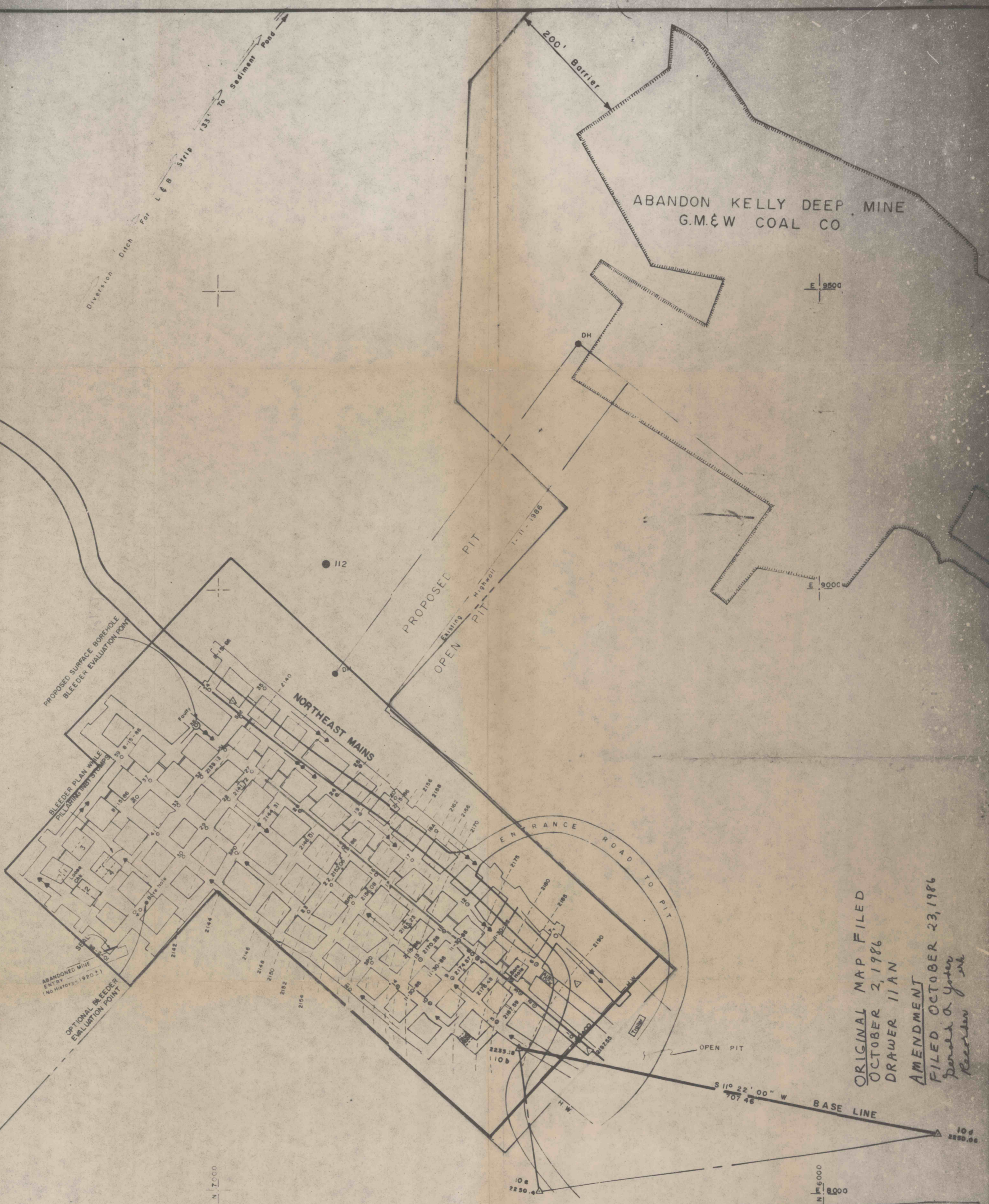
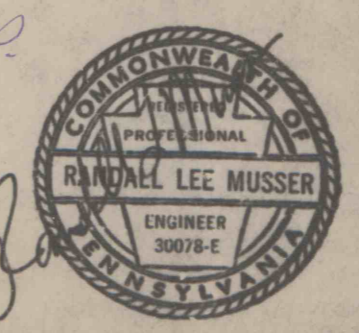
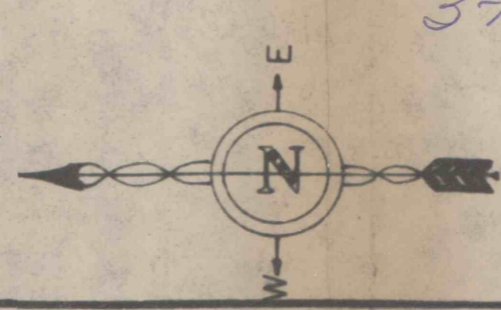
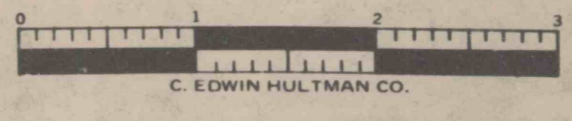


PLAT BOOK 4 DRAWER 11AP
PAGE 49A



ORIGINAL MAP FILED
OCTOBER 2, 1986
DRAWER 11AN
AMENDMENT
FILED OCTOBER 23, 1986
*per order of Judge
Reedman*

Corner Stone



SUBSIDENCE AMENDMENT
 Subsidence Permit No. 0584301
 Mine Subsidence Exhibit "B"
Zelanko Coal Company
 TOWERS MINE — KELLY SEAM
 Broad Top Township Bedford County, Pa.
 Scale 1" = 100' Date: OCT 14 1986
 Drawn by T.C.M.
 Checked by
 Revised by
MUSSER ENGINEERING
 RDI Central City, Pa.
 (814) 754-8477

3-19-87FA