

3 3/29 029 N

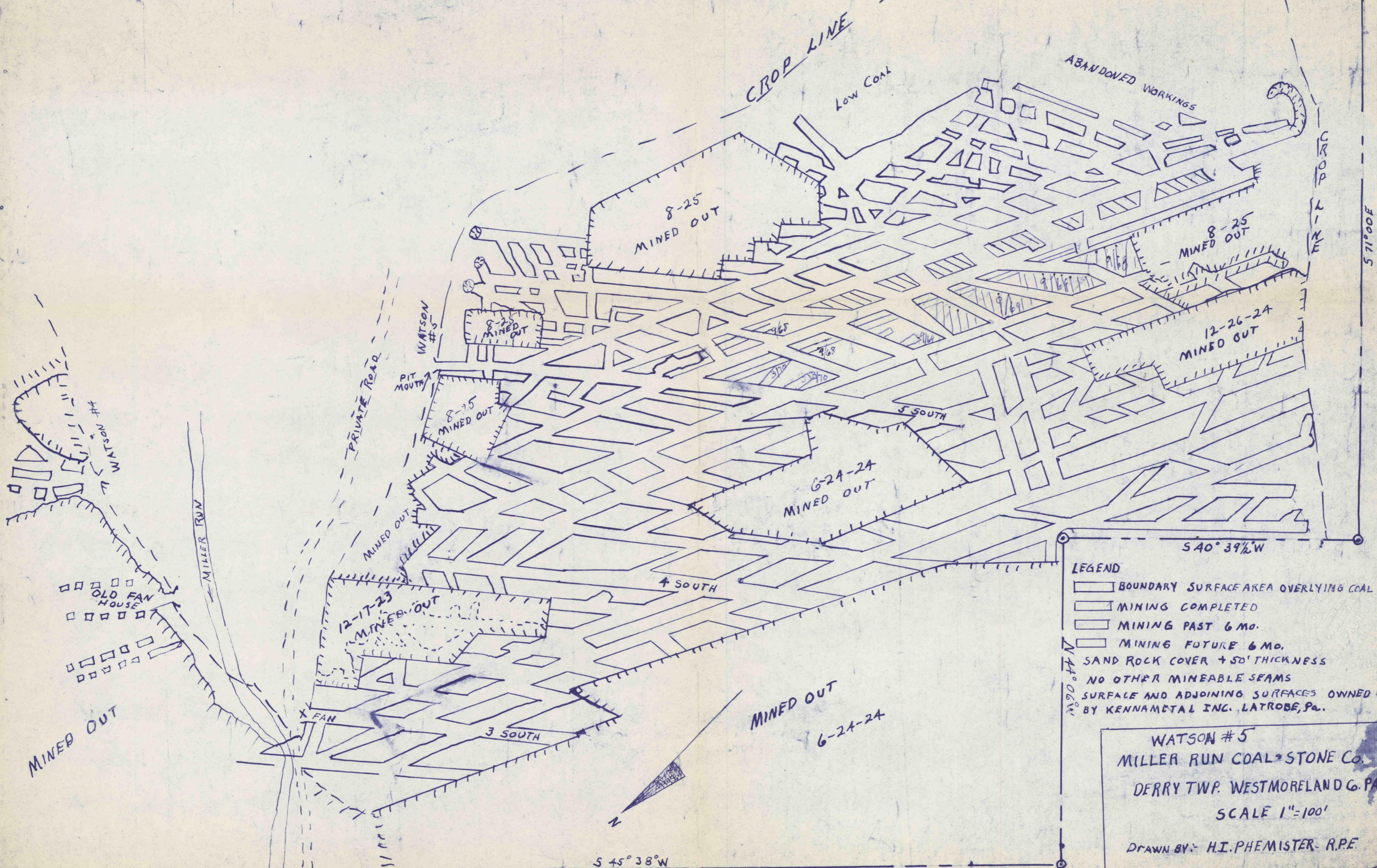
SURFACE OWNED BY KENNA METAL Co. LATROBE, PA.

COAL OWNED BY MRS. C.Y. WATSON - LATROBE, PA.

ALL SECOND MINING - NO SOLID COAL

NO SURFACE BUILDINGS

OPERATION FORMERLY - FRANCIS MINE - RIDGE COAL Co.



- LEGEND
- BOUNDARY SURFACE AREA OVERLYING COAL
  - MINING COMPLETED
  - MINING PAST 6 Mo.
  - MINING FUTURE 6 Mo.
  - SAND ROCK COVER + 50' THICKNESS
  - NO OTHER MINEABLE SEAMS
- SURFACE AND ADJOINING SURFACES OWNED BY KENNA METAL INC. LATROBE, PA.

WATSON #5  
 MILLER RUN COAL & STONE Co.  
 DERRY TWP. WESTMORELAND Co. PA.  
 SCALE 1"=100'  
 DRAWN BY: H.I. PHEMISTER - R.P.E.  
 DATE - Aug 11 1966

57100E

9/6/66