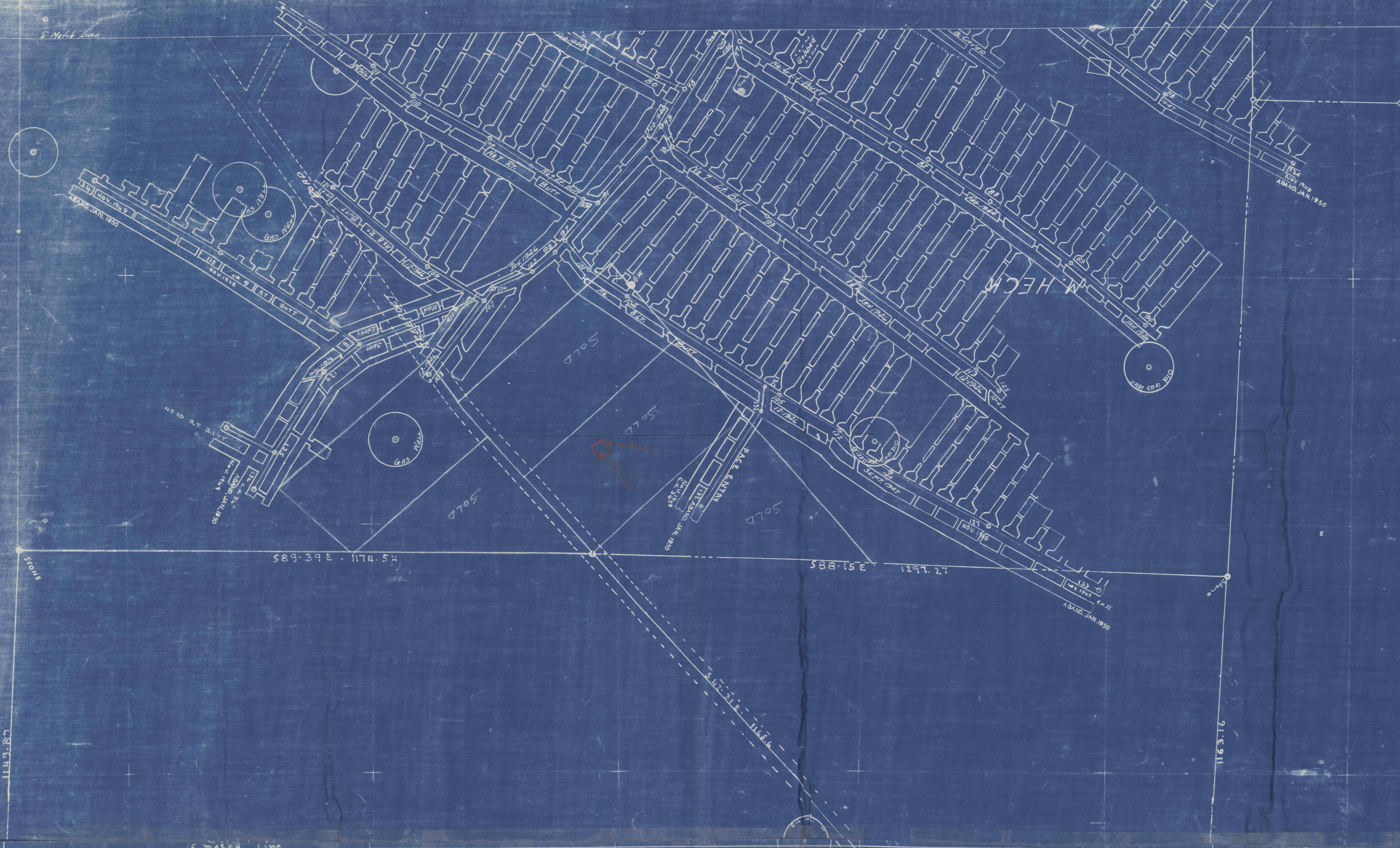
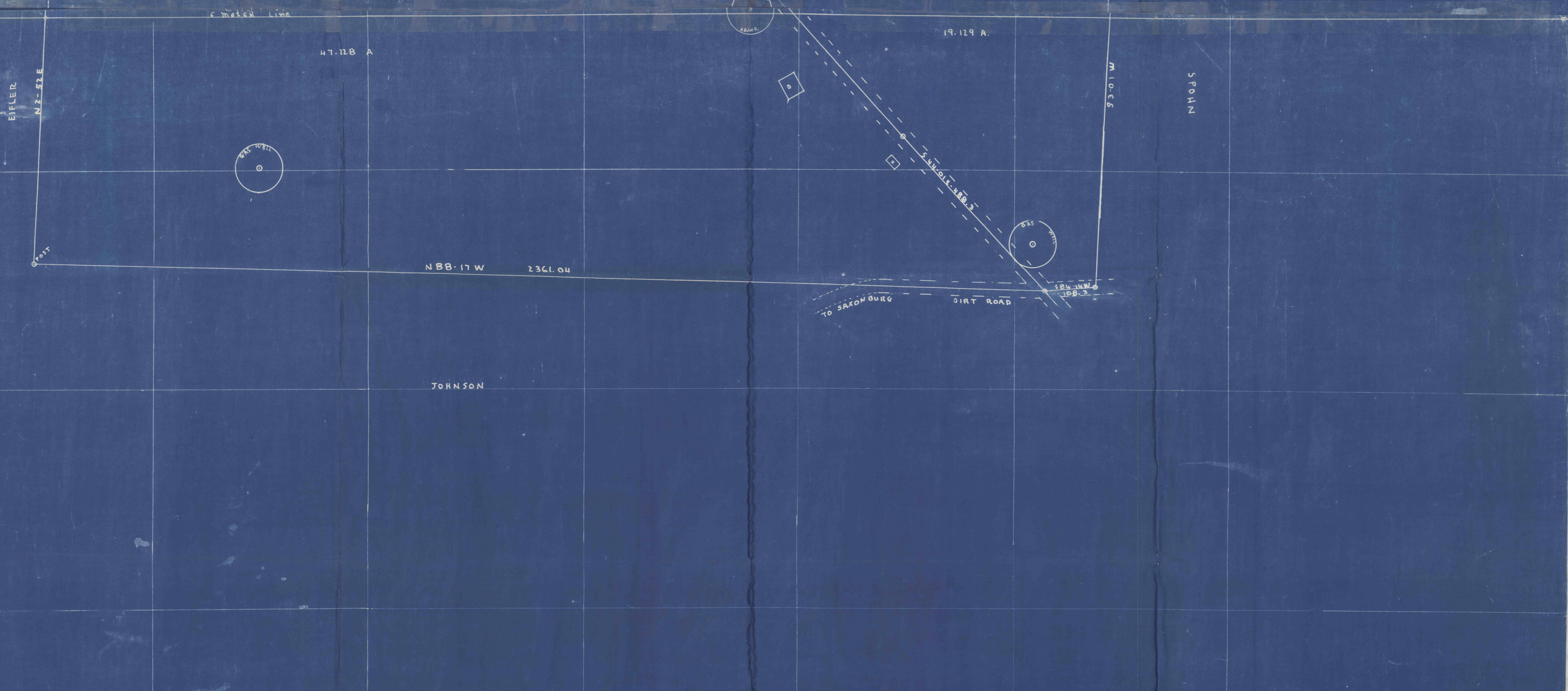


S. Meritt, Conn.



589.59E - 1174.54  
388.15E  
1297.21  
315.211



EVERETT  
N. 2-51 E

47.12B A

19.129 A

SPOHN

N 88-17 W 2361.04

JOHNSON

TO SACKSBURG  
DIRT ROAD

W. J. CORNELL CO. INC.  
1000 N. 10th St.  
SACRAMENTO, CALIF.