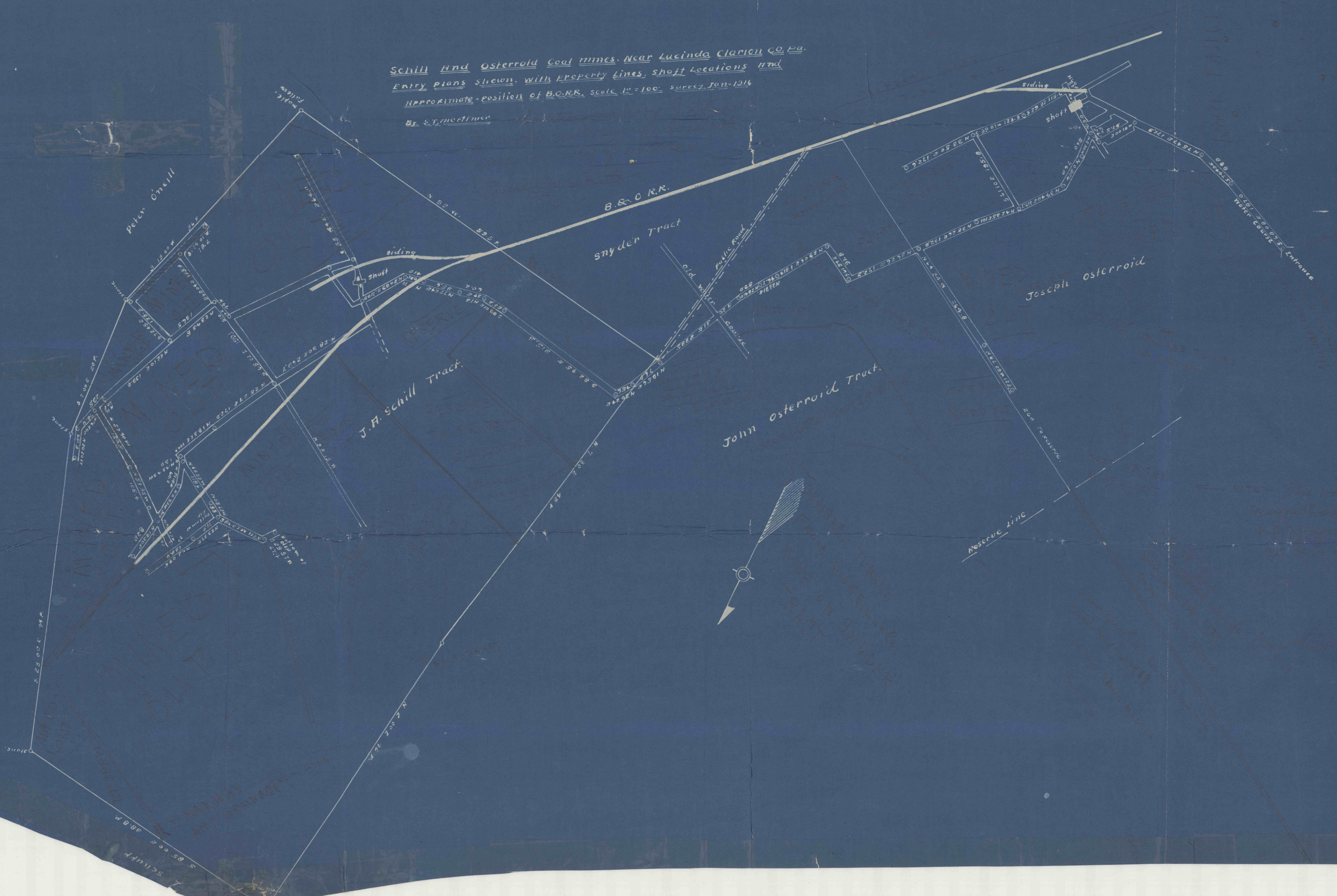


Schill and Osteroid Coal Mines, Near Lucinda Clarion Co., Pa.  
Entry Plans shown, with property lines, shaft locations and  
approximate position of B.O.R.R. scale 1" = 100' survey Jan-1916  
By S.T. Mcintire



COASTAL FAULT

MINING TRACTS  
FROM WASHINGTON  
TRACT OF SNYDER

Note - This was a fault  
discovered in  
the property of  
the State