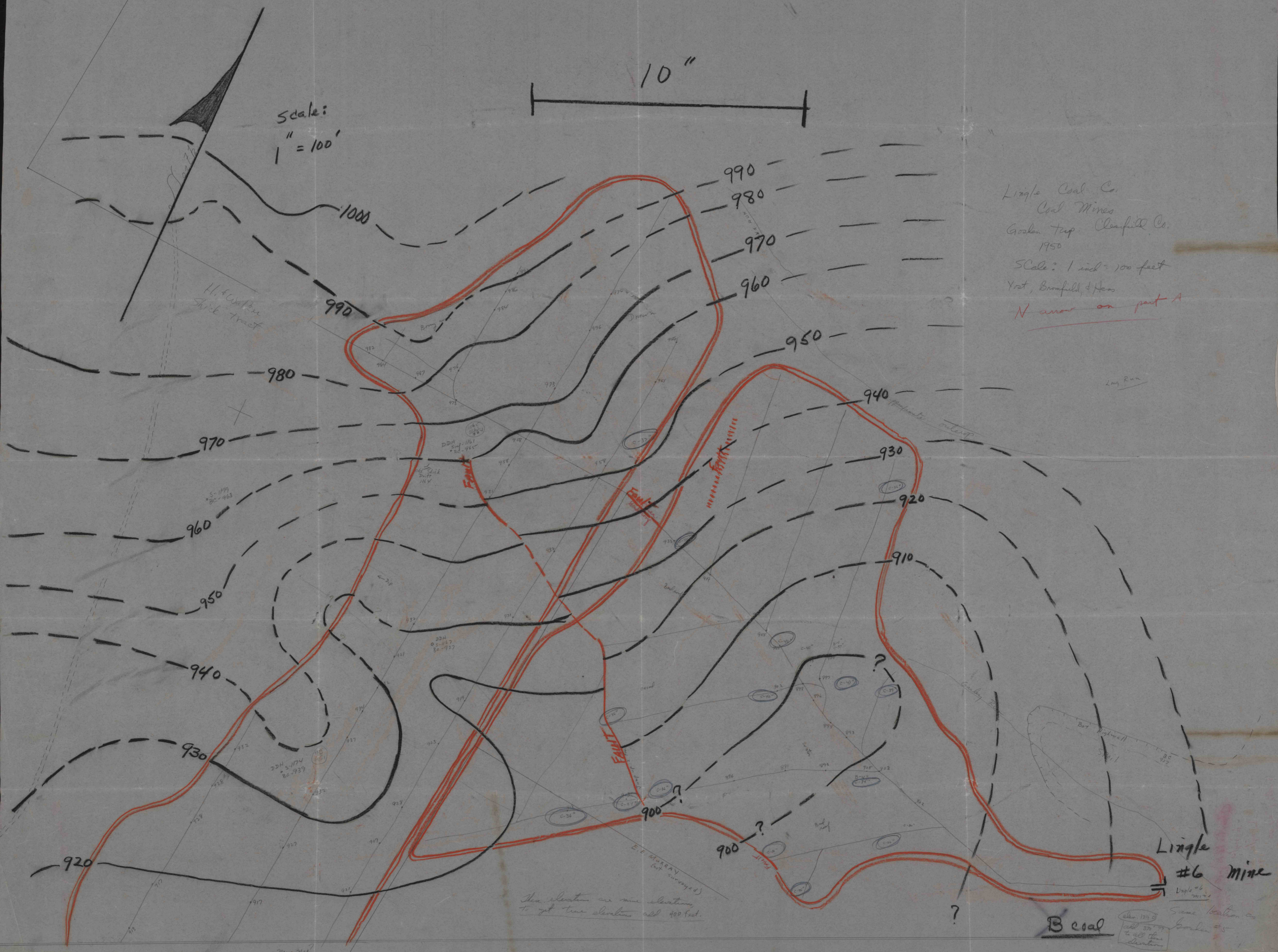


Scale:  
1" = 100'

10"

Lingle Coal Co.  
Coal Mines  
Golden Top, Clearfield Co.  
1950  
Scale: 1 inch = 100 feet  
Yost, Bromfield, & Hess  
Notes on part A



H.A. Walker  
Shick tract

The elevation on mine elevations  
to get true elevation add 400 feet.

B coal

Lingle #6 mine

Same location as  
Golden #5