

CLOYD S. ROUDABUSH ET. AL.

SHOWING PROPERTY & MINING OPERATIONS

IN THE B SEAM OF COAL

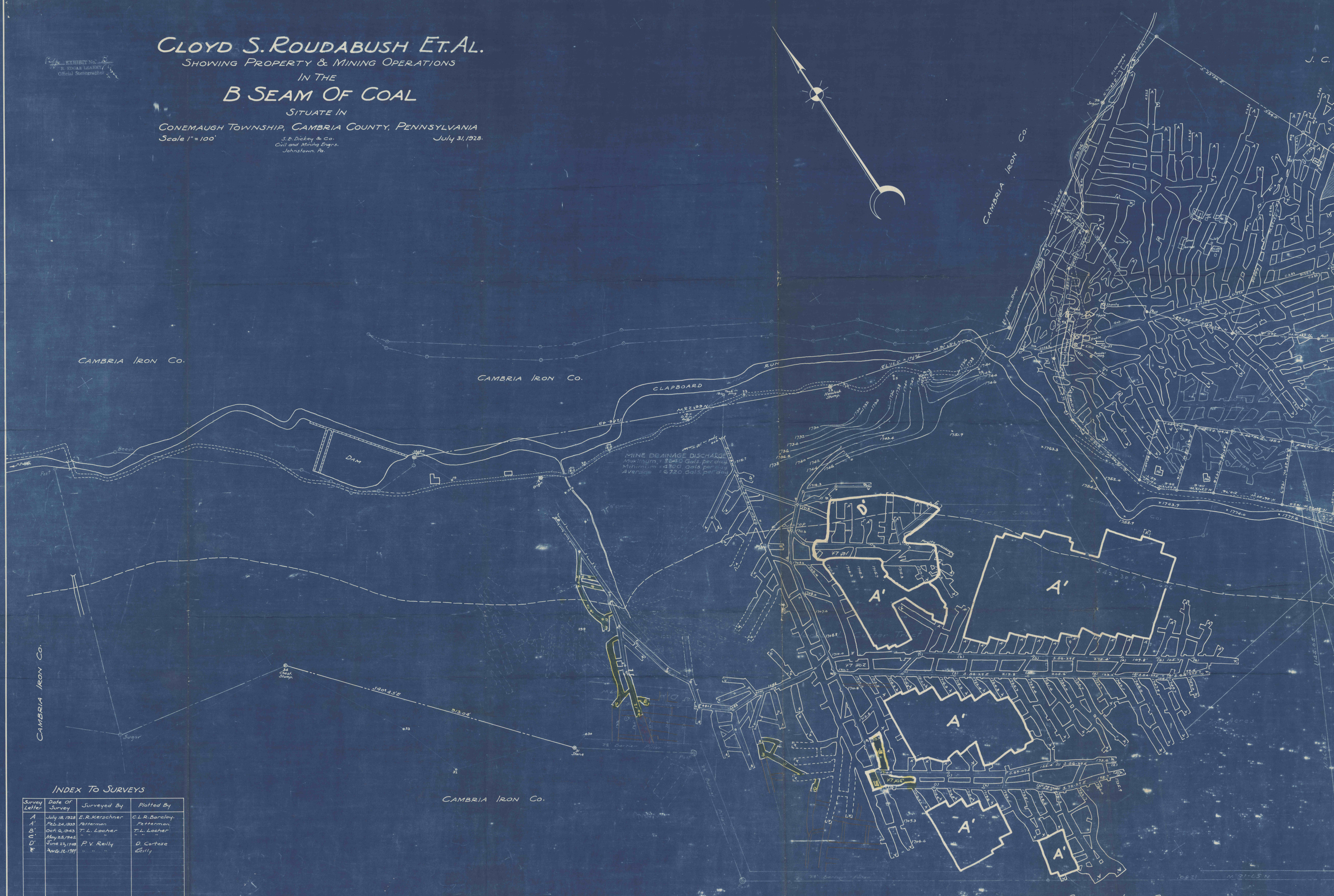
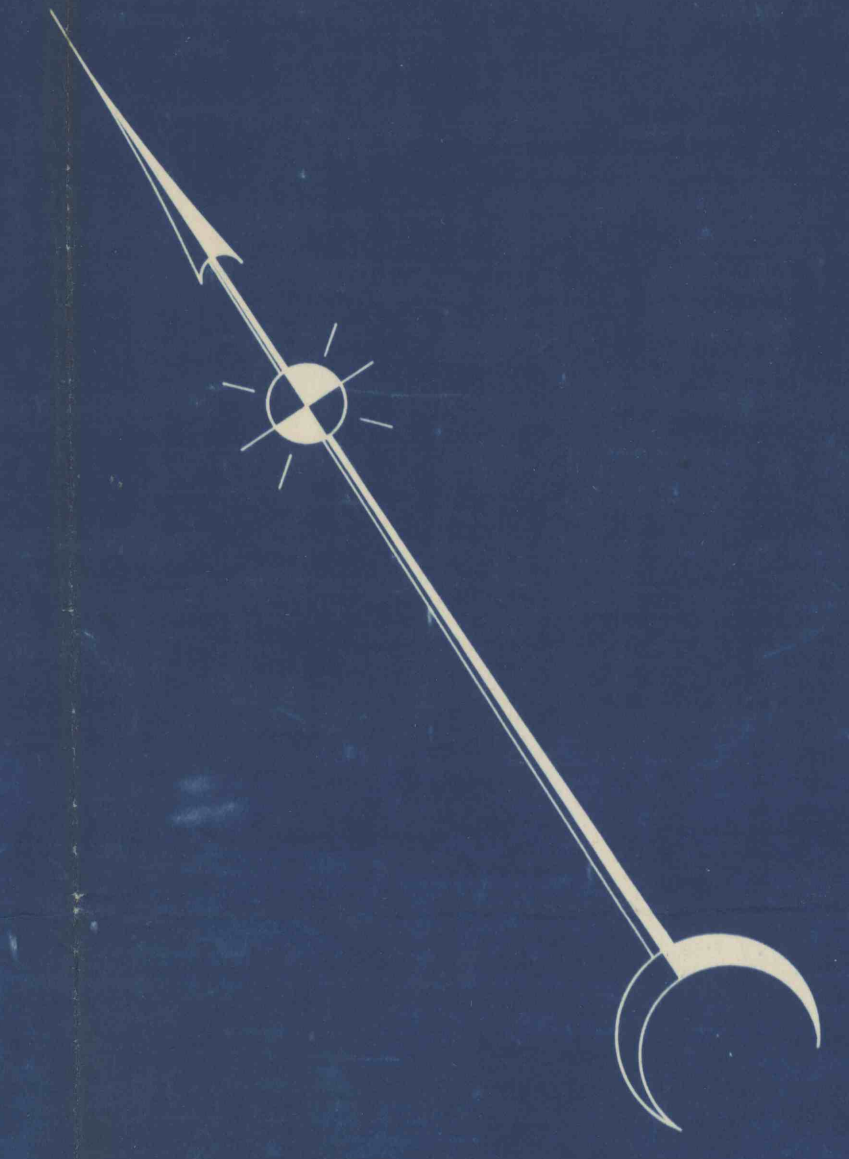
SITUATE IN

CONEMAUGH TOWNSHIP, CAMBRIA COUNTY, PENNSYLVANIA

Scale 1" = 100'

S. E. Dickey & Co.
Civil and Mining Engrs.
Johnstown, Pa.

July 31, 1928.



INDEX TO SURVEYS

Survey Letter	Date of Survey	Surveyed By	Plotted By
A	July 18, 1928	E. R. Kerschner	G. L. R. Barclay
A'	Feb. 24, 1930	Estimation	Estimation
B	Oct. 6, 1923	T. L. Locher	T. L. Locher
C	May 25, 1925	"	"
D	June 23, 1928	P. V. Reilly	D. Cortese
E	Aug. 12, 1929	"	Gilly