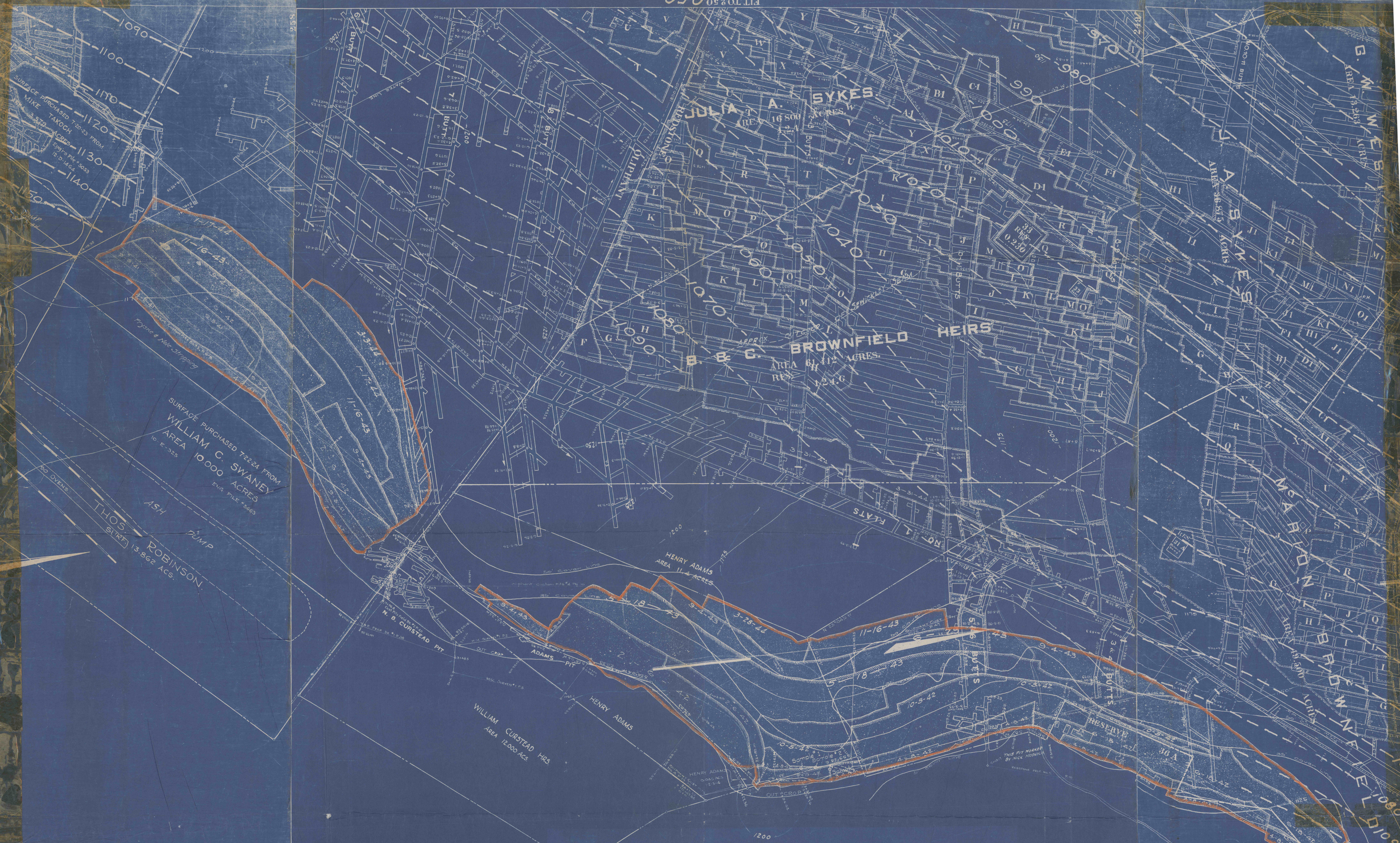


250
PIT 70250



OLIPHANT STRIP PIT

H.C. FRICK COKE CO.

GEORGES & SOUTH UNION TWPS. FAYETTE CO. PENNA
 SCALE 1" = 100' SEPT. 1941
 DATUM OF LEVELS - 16.1 FT. BELOW MEAN TIDE AT SANDY HOOK.

These prints are certified to be an exact copy of the original map of Oliphant Strip Pit and to the best of my knowledge and belief show the excavations in said pit.

August J. Brantner Chief Engineer
 Dated April 27, 1944

#1184
 12.22.43

219

240