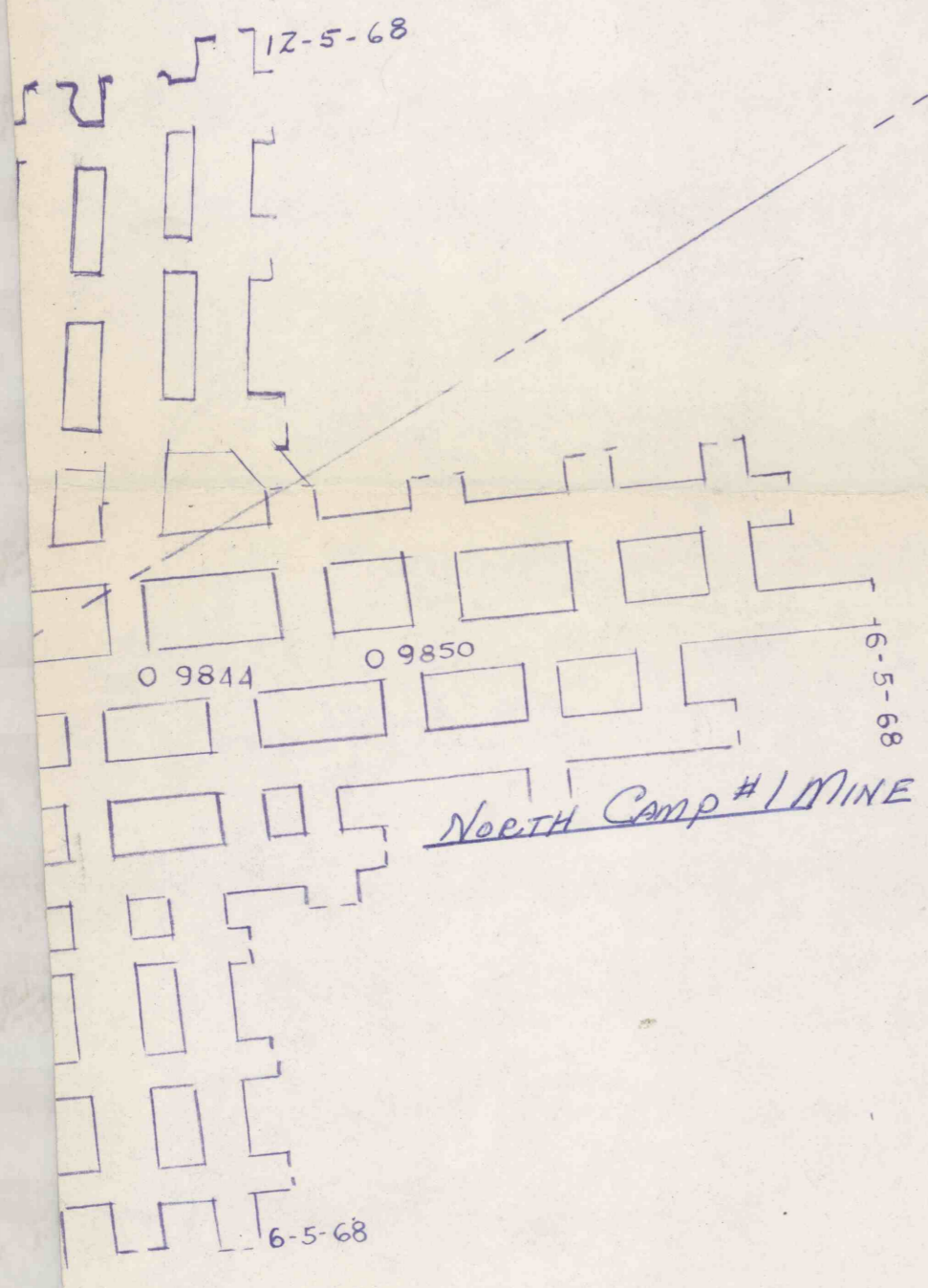


HARPER, SCOLLON, & SMITH

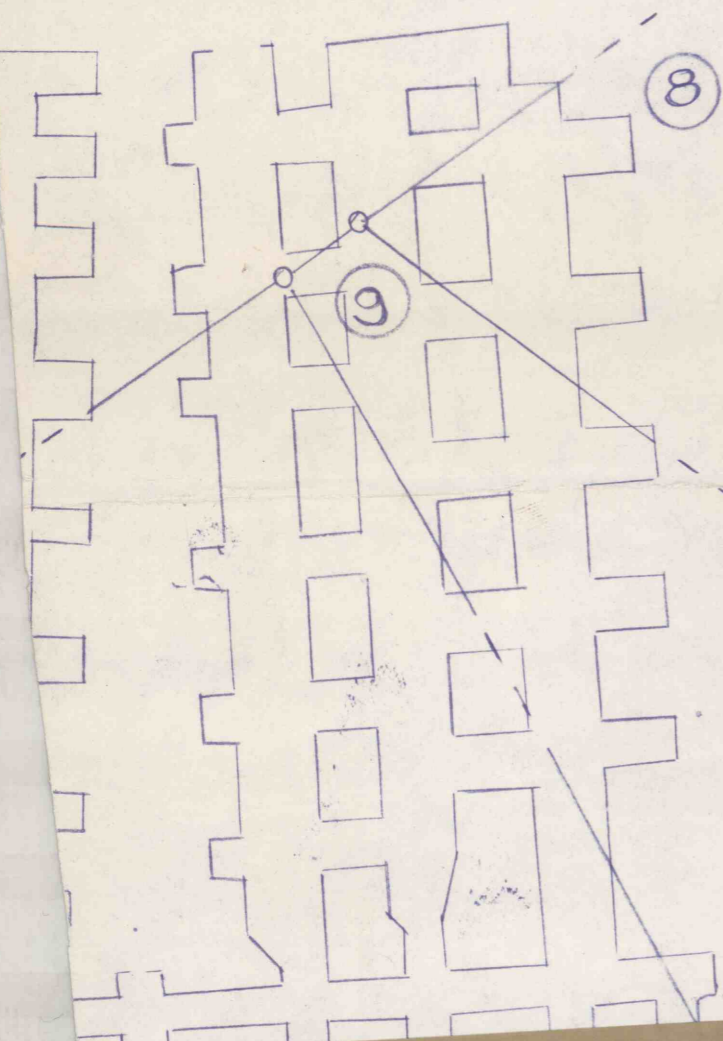
SCOLLON, & SMITH

R. KUNSMAN

BENJAMIN COA



NORTH CAMP #2 MINE  
(INACTIVE)  
(ABANDONED) - 6-15-70



SEAL  
 SEAL  
 SEAL  
 SEAL

NORTH CAMP #3 MINE

ABANDONED MINE MAP  
 DEEP MINE PROPERTY MAP  
 NORTH CAMP # 2 MINE  
 CHEST TOWNSHIP, CLEARFIELD CO  
 MIDDLE KITTANNING SEAM  
 SCALE 1" = 100' DATE 6-15-70  
 SURVEYOR - JOHN C. PASSMORE

John C. Passmore  
 SURVEYOR 28741-E

I certify that this mine map is a true and correct copy of an original mine map, as based on a survey of the mine by George Jones R.C. and Property survey by John C. Passmore.

John C. Passmore  
 JOHN C. PASSMORE

- MINING COMPLETED AREA 6-15-69 TO
- CONTEMPLATED MINING
- REVISED ADDITIONS
- MINE INACTIVE 1-10-68 TO 6-15-70