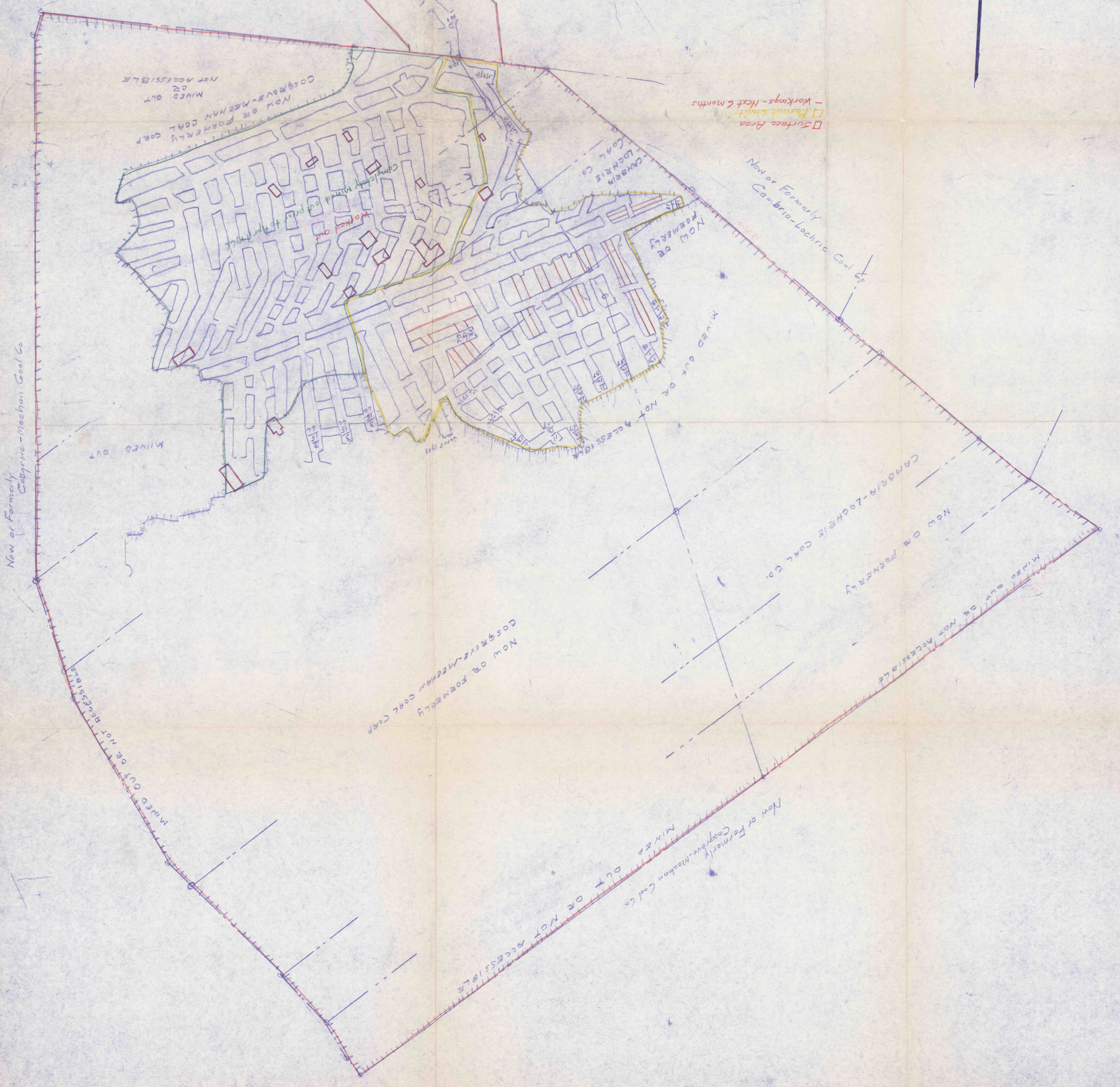


#1908  
1212  
CC



NAU COAL COMPANY  
Q PRIME OPERATIONS  
SITE IN  
JOHNSTOWN - CAMBRIA CO., PA.  
NOV. 14, 1957  
SCALE 1:100'  
GERRF. ENGINEERING COMPANY  
SHIRSVILLE, PA.

□ Surface Area  
□ Permit Limit  
- Workings - Next 6 months



Now or Formerly  
Cosgrove-Meehan Coal Co.

Now or Formerly  
Cosgrove-Meehan Coal Co.

Now or Formerly  
Cosgrove-Meehan Coal Co.

Now or Formerly  
Cambria-Lochrie Coal Co.

Now or Formerly

Mined Out or Not Accessible

Now or Formerly  
Cosgrove-Meehan Corp.  
Mined Out  
Not Accessible

CAMBRIA  
LOCHRIE  
COAL CO.

Now or  
Formerly

Now or Formerly  
Cambria-Lochrie Coal Co.

Mined Out or Not  
Accessible

Mined Out

Street  
Labels  
Lynch  
State Rte. 102