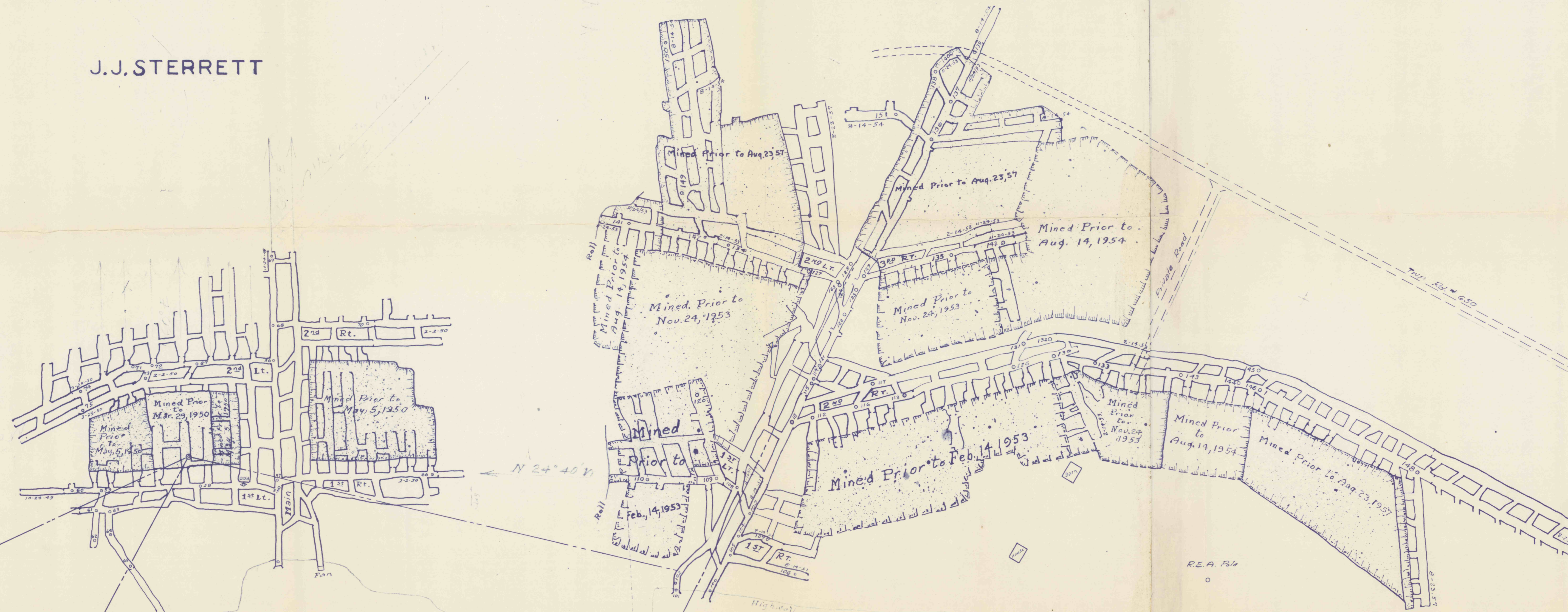


H. ATWELL

J.J. STERRETT



KNISLEY

MORRISON

BRITTON

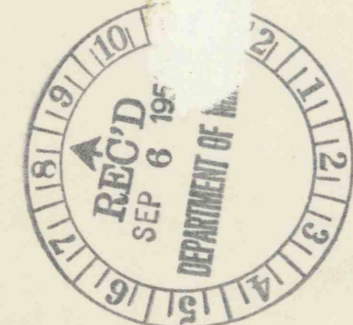
MINE MAP
MORRISON COAL COMPANY
MINE No. 1

4-1961
WASHINGTON TOWNSHIP, JEFFERSON COUNTY, PENN'A.

SCALE 1 INCH = 100 FEET
WALTER J. ZIMMERMAN, SURVEYOR-ENGINEER, PUNXSUTAWNEY, PENN'A.

OCTOBER, 1949
PUNXSUTAWNEY, PENN'A.

Date of Survey
Oct. 24, 1949
Feb. 2, 1950
May 9, 1950
May 10, 1951
Aug. 14, 1951
Mar. 3, 1952
Aug. 9, 1952
Feb. 14, 1953
Nov. 24, 1953
Aug. 19, 1954
Aug. 23, 1957



#1757
12-17-49
CC